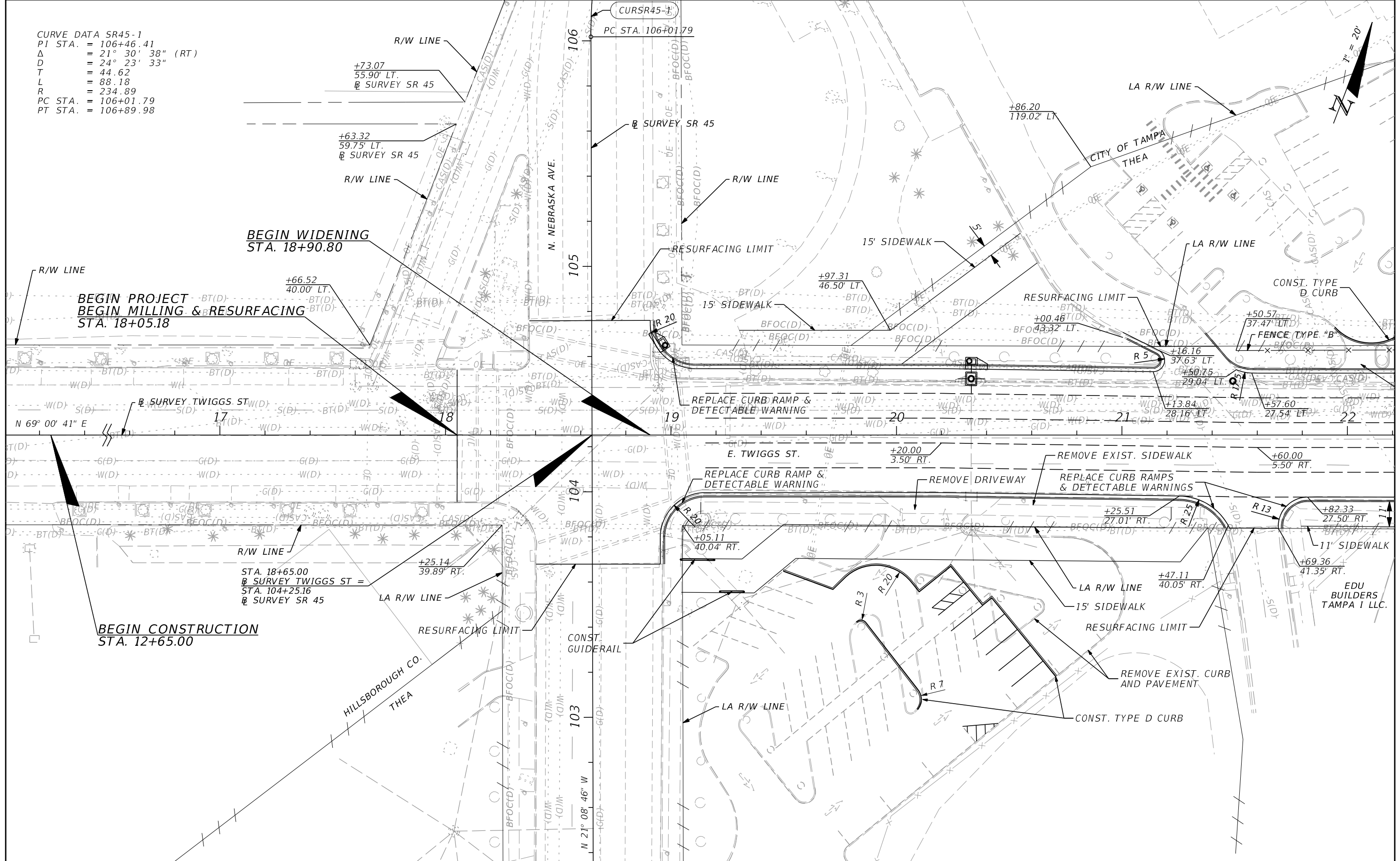


CURVE DATA SR45-1  
 PI STA. = 106+46.41  
 $\Delta$  = 21° 30' 38" (RT)  
 D = 24° 23' 33"  
 T = 44.62  
 L = 88.18  
 R = 234.89  
 PC STA. = 106+01.79  
 PT STA. = 106+89.98



| REVISIONS |             |      |             |
|-----------|-------------|------|-------------|
| DATE      | DESCRIPTION | DATE | DESCRIPTION |
|           |             |      |             |

HNTB CORPORATION  
 201 N. FRANKLIN STREET, SUITE 1200  
 TAMPA, FL 33602  
 PHONE: (813) 402-4150  
 CERTIFICATE OF AUTHORIZATION NO. 6500  
 DOUGLAS J. BURKHART, P.E. NO. 40900

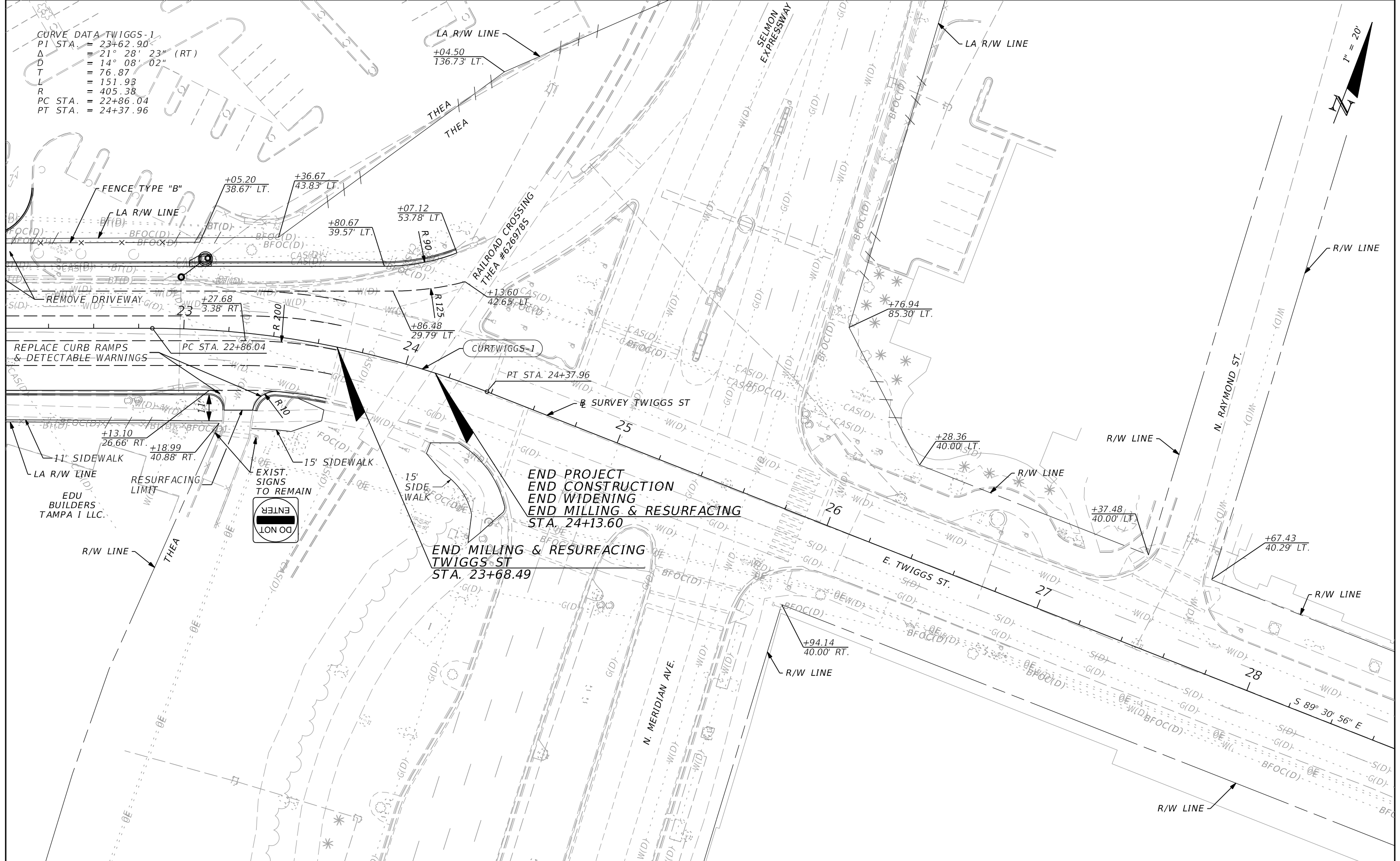
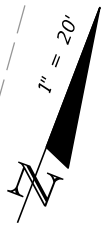
|   |              |                      |
|---|--------------|----------------------|
| TAMPA HILLSBOROUGH EXPRESSWAY AUTHORITY |              |                      |
| ROAD NO.                                | COUNTY       | FINANCIAL PROJECT ID |
| TWIGGS ST                               | HILLSBOROUGH | 000918               |

**ROADWAY PLAN (01)**  
**TWIGGS ST**

|           |
|-----------|
| SHEET NO. |
| 4         |

THE OFFICIAL RECORD OF THIS SHEET IS THE ELECTRONIC FILE DIGITALLY SIGNED AND SEALED UNDER RULE 61G15-23.004, F.A.C.

CURVE DATA TWIGGS-1  
 PI STA. = 23+62.90  
 $\Delta$  = 21° 28' 23" (RT)  
 D = 14° 08' 02"  
 T = 76.87  
 L = 151.93  
 R = 405.38  
 PC STA. = 22+86.04  
 PT STA. = 24+37.96



| REVISIONS |             |      |             |
|-----------|-------------|------|-------------|
| DATE      | DESCRIPTION | DATE | DESCRIPTION |
|           |             |      |             |

HNTB CORPORATION  
 201 N. FRANKLIN STREET, SUITE 1200  
 TAMPA, FL 33602  
 PHONE: (813) 402-4150  
 CERTIFICATE OF AUTHORIZATION NO. 6500  
 DOUGLAS J. BURKHART, P.E. NO. 40900

|   |              |                      |
|---|--------------|----------------------|
| TAMPA HILLSBOROUGH EXPRESSWAY AUTHORITY |              |                      |
| ROAD NO.                                | COUNTY       | FINANCIAL PROJECT ID |
| TWIGGS ST                               | HILLSBOROUGH | 000918               |

**ROADWAY PLAN (02)**  
**TWIGGS ST**

|           |
|-----------|
| SHEET NO. |
| 5         |

THE OFFICIAL RECORD OF THIS SHEET IS THE ELECTRONIC FILE DIGITALLY SIGNED AND SEALED UNDER RULE 61G15-23.004, F.A.C.