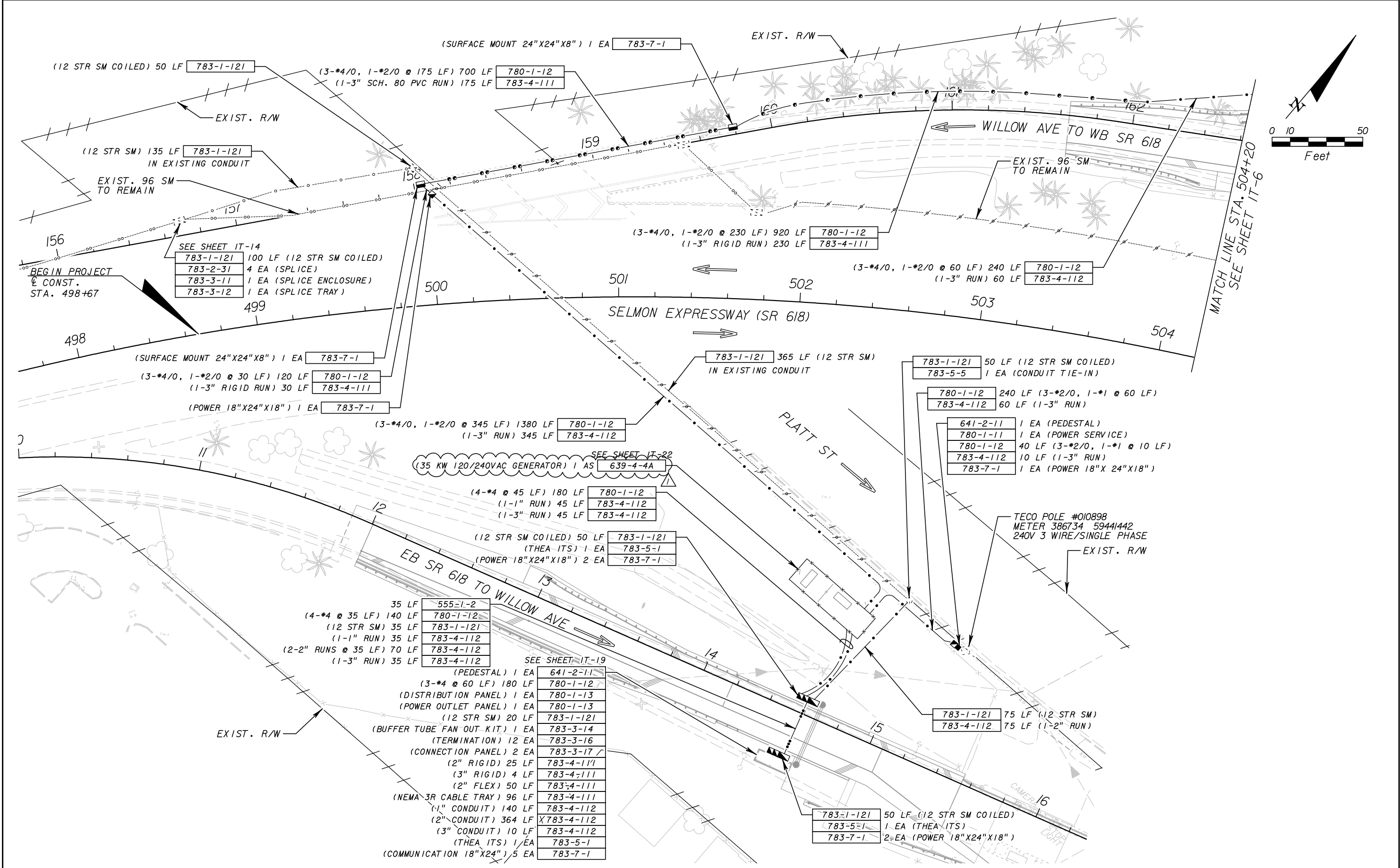


REVISIONS				<b>HNTB</b> 10210 Highland Manor Drive - Suite 140 - Tampa, FL 33610 (813) 246-5527 - Cert. of Auth. No. EB6500 Engineer of Record: Malcolm Y. Tomatani, P.E. No: 65465	<b>TAMPA - HILLSBOROUGH EXPRESSWAY AUTHORITY</b>		<b>PROJECT LAYOUT</b>	SHEET NO.
DATE	DESCRIPTION	DATE	DESCRIPTION		ROAD NO.	COUNTY		FINANCIAL PROJECT ID
					SR 618	HILLSBOROUGH		



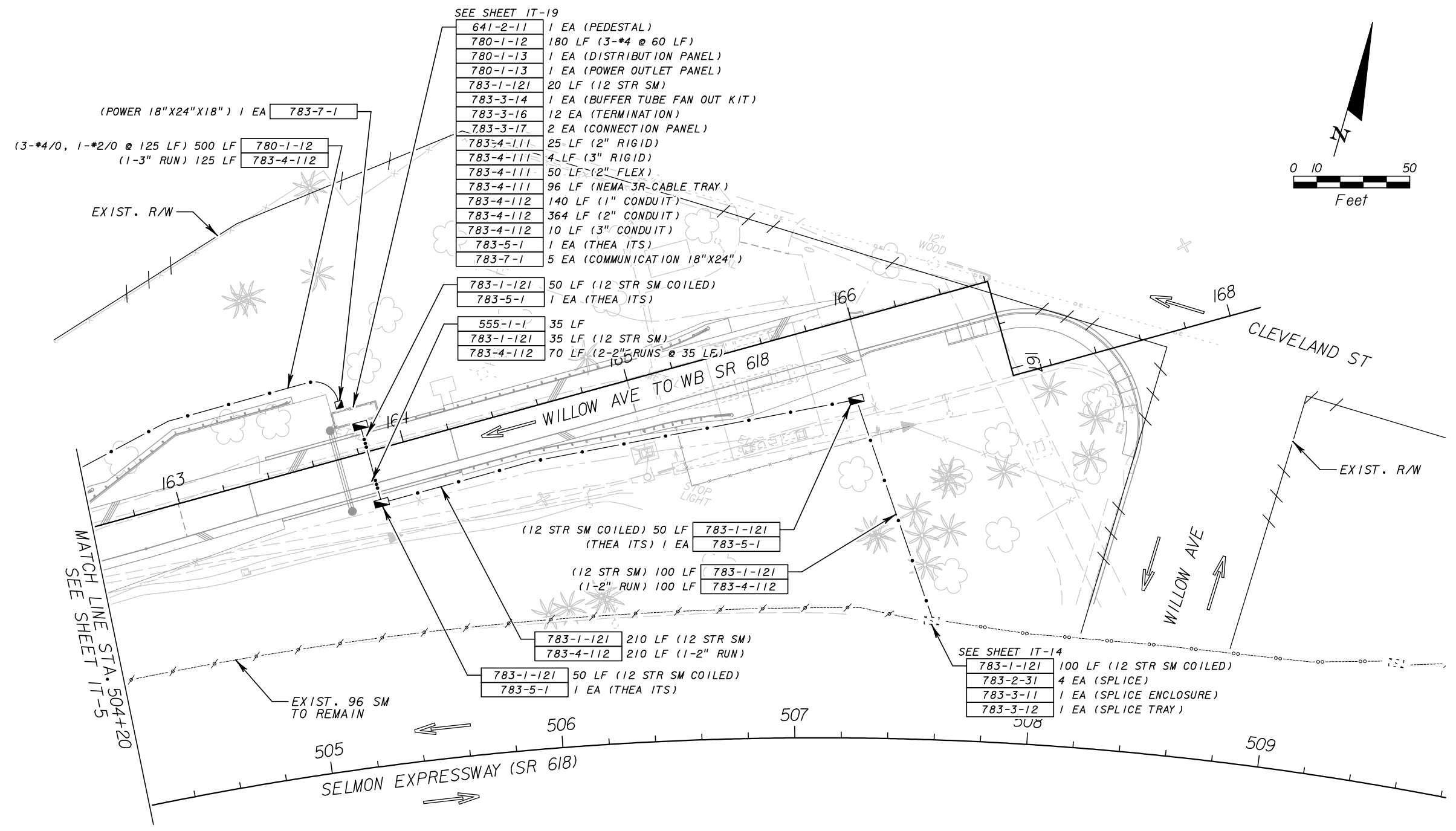
REVISIONS			
DATE	DESCRIPTION	DATE	DESCRIPTION
12/15/09	GENERATOR PAY ITEM NUMBER, DESCRIPTION		

**HNTB**  
 10210 Highland Manor Drive - Suite 140 - Tampa, FL 33610  
 (813) 246-5527 - Cert. of Auth. No. EB6500  
 Engineer of Record: Malcolm Y. Tomatani, P.E. No: 65465

TAMPA - HILLSBOROUGH EXPRESSWAY AUTHORITY		
ROAD NO.	COUNTY	FINANCIAL PROJECT ID
SR 618	HILLSBOROUGH	

**ITS PLAN**  
**WILLOW AVE EB**

SHEET NO.  
IT-5



- SEE SHEET IT-19
- 641-2-11 1 EA (PEDESTAL)
  - 780-1-12 180 LF (3-#4 @ 60 LF)
  - 780-1-13 1 EA (DISTRIBUTION PANEL)
  - 780-1-13 1 EA (POWER OUTLET PANEL)
  - 783-1-121 20 LF (12 STR SM)
  - 783-3-14 1 EA (BUFFER TUBE FAN OUT KIT)
  - 783-3-16 12 EA (TERMINATION)
  - 783-3-17 2 EA (CONNECTION PANEL)
  - 783-4-111 25 LF (2" RIGID)
  - 783-4-111 4 LF (3" RIGID)
  - 783-4-111 50 LF (2" FLEX)
  - 783-4-111 96 LF (NEMA 3R-CABLE TRAY)
  - 783-4-112 140 LF (1" CONDUIT)
  - 783-4-112 364 LF (2" CONDUIT)
  - 783-4-112 10 LF (3" CONDUIT)
  - 783-5-1 1 EA (THEA ITS)
  - 783-7-1 5 EA (COMMUNICATION 18"X24")

- (POWER 18"X24"X18") 1 EA 783-7-1
- (3-#4/0, 1-#2/0 @ 125 LF) 500 LF 780-1-12
- (1-3" RUN) 125 LF 783-4-112

- 783-1-121 50 LF (12 STR SM COILED)
- 783-5-1 1 EA (THEA ITS)
- 555-1-1 35 LF
- 783-1-121 35 LF (12 STR SM)
- 783-4-112 70 LF (2-2" RUNS @ 35 LF)

- (12 STR SM COILED) 50 LF 783-1-121
- (THEA ITS) 1 EA 783-5-1
- (12 STR SM) 100 LF 783-1-121
- (1-2" RUN) 100 LF 783-4-112

- 783-1-121 210 LF (12 STR SM)
- 783-4-112 210 LF (1-2" RUN)

- 783-1-121 50 LF (12 STR SM COILED)
- 783-5-1 1 EA (THEA ITS)

- SEE SHEET IT-14
- 783-1-121 100 LF (12 STR SM COILED)
  - 783-2-31 4 EA (SPLICE)
  - 783-3-11 1 EA (SPLICE ENCLOSURE)
  - 783-3-12 1 EA (SPLICE TRAY)

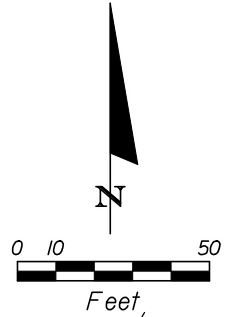
REVISIONS				 10210 Highland Manor Drive - Suite 140 - Tampa, FL 33610 (813) 246-5527 - Cert. of Auth. No. EB6500 Engineer of Record: Malcolm Y. Tomatani, P.E. No: 65465	TAMPA - HILLSBOROUGH EXPRESSWAY AUTHORITY			ITS PLAN WILLOW AVE WB	SHEET NO. IT-6
DATE	DESCRIPTION	DATE	DESCRIPTION		ROAD NO.	COUNTY	FINANCIAL PROJECT ID		
				SR 618	HILLSBOROUGH				

(3-#1/0, 1-#2 @ 190 LF) 760 LF 780-1-12  
 (1-1" RUN) 190 LF 783-4-112  
 (1-3" RUN) 190 LF 783-4-112

(3-12 STR SM) 435 LF 783-1-121  
 (1-2" RUN) 145 LF 783-4-112

SEE SHEET IT-19

641-2-11	1 EA (PEDESTAL)
780-1-12	180 LF (3-#4 @ 60 LF)
780-1-13	1 EA (DISTRIBUTION PANEL)
780-1-13	1 EA (POWER OUTLET PANEL)
783-1-121	20 LF (12 STR SM)
783-3-14	1 EA (BUFFER TUBE FAN OUT KIT)
783-3-16	12 EA (TERMINATION)
783-3-17	2 EA (CONNECTION PANEL)
783-4-111	31 LF (2" RIGID)
783-4-111	4 LF (3" RIGID)
783-4-111	50 LF (2" FLEX)
783-4-111	96 LF (NEMA 3R CABLE TRAY)
783-4-112	140 LF (1" CONDUIT)
783-4-112	364 LF (2" CONDUIT)
783-4-112	10 LF (3" CONDUIT)
783-5-1	1 EA (THEA ITS)
783-7-1	5 EA (COMMUNICATION 18"X24")



EXIST. R/W  
50  
BROREIN ST

(3-#1/0, 3-#2/0, 1-#1, 1-#2 @ 85 LF) 680 LF 780-1-12  
 (1-1" RUN) 85 LF 783-4-112  
 (1-3" RUN) 85 LF 783-4-112

85 LF 555-1-2  
 (3-#2/0, 1-#1 @ 85 LF) 340 LF 780-1-12  
 (12 STR SM) 85 LF 783-1-121  
 (2-2" RUNS @ 85 LF) 170 LF 783-4-112  
 (1-3" RUN) 85 LF 783-4-112

(45 KW 120/240VAC GENERATOR) 1 AS 639-4-4C  
 SEE SHEET IT-22

SEE SHEET IT-20

641-2-11	1 EA (PEDESTAL)
780-1-12	180 LF (3-#4 @ 60 LF)
780-1-13	1 EA (DISTRIBUTION PANEL)
783-1-121	60 LF (3-12 STR SM @ 20 LF)
783-3-14	3 EA (BUFFER TUBE FAN OUT KIT)
783-3-16	36 EA (TERMINATION)
783-3-17	6 EA (CONNECTION PANEL)
783-4-111	4 LF (2" RIGID)
783-4-111	4 LF (3" RIGID)
783-4-112	350 LF (2" CONDUIT)
783-4-112	10 LF (3" CONDUIT)
783-5-1	3 EA (THEA ITS)
783-7-1	3 EA (COMMUNICATION 18"X24")

(3-#2/0, 1-#1 @ 30 LF) 120 LF 780-1-12  
 (1-3" RUN) 30 LF 783-4-112

55 LF 555-1-2  
 (3-#4 @ 55 LF) 165 LF 780-1-12  
 (8-2" RUNS @ 55 LF) 440 LF 783-4-112

(PEDESTAL) 1 EA 641-2-11  
 (POWER SERVICE) 1 EA 780-1-11  
 (3-#2/0, 1-#1 @ 10 LF) 40 LF 780-1-12  
 (1-3" RUN) 10 LF 783-4-112  
 (POWER 13"X24"X18") 1 EA 783-7-1

(COMMUNICATION 18"X24") 2 EA 783-7-1

(3-#4 @ 50 LF) 150 LF 780-1-12  
 (8-2" RUNS @ 50 LF) 400 LF 783-4-112

GE METER CAN  
 GE KV2CS  
 28 321 082  
 044267 AG  
 TECO  
 REBUILD CAN

783-1-121 50 LF (12 STR SM COILED)  
 783-5-1 1 EA (THEA ITS)  
 783-7-1 1 EA (POWER 18"X24"X18")

783-1-121 50 LF (12 STR SM COILED)  
 783-5-1 1 EA (THEA ITS)  
 783-7-1 2 EA (POWER 18"X24"X18")

783-1-121 50 LF (12 STR SM)  
 783-4-112 50 LF (1-2" RUN)

SEE SHEET IT-14

783-1-121	400 LF (4-12 STR SM COILED)
783-2-31	10 EA (SPLICE)
783-3-11	1 EA (SPLICE ENCLOSURE)
783-3-12	1 EA (SPLICE TRAY)
783-5-5	1 EA (CONDUIT TIE-IN)

SEE SHEET IT-20

780-1-12	180 LF (3-#4 @ 60 LF)
780-1-13	1 EA (POWER OUTLET PANEL)
783-4-111	31 LF (2" RIGID)
783-4-111	50 LF (2" FLEX)
783-4-111	136 LF (NEMA 3R CABLE TRAY)
783-4-112	140 LF (1" CONDUIT)
783-4-112	364 LF (2" CONDUIT)
783-7-1	4 EA (COMMUNICATION 18"X24")

SEE SHEET IT-20

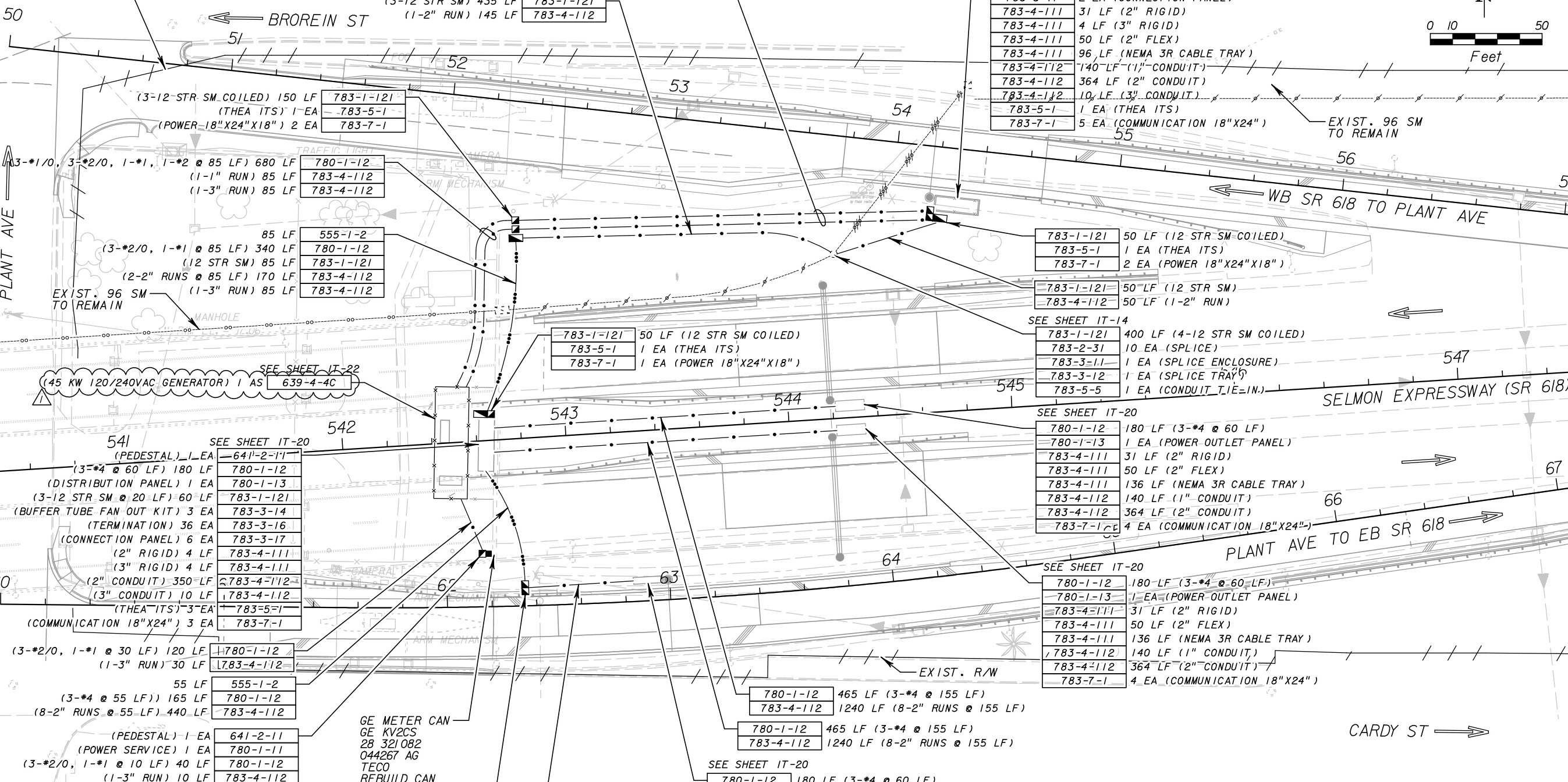
780-1-12	180 LF (3-#4 @ 60 LF)
780-1-13	1 EA (POWER OUTLET PANEL)
783-4-111	31 LF (2" RIGID)
783-4-111	50 LF (2" FLEX)
783-4-111	136 LF (NEMA 3R CABLE TRAY)
783-4-112	140 LF (1" CONDUIT)
783-4-112	364 LF (2" CONDUIT)
783-7-1	4 EA (COMMUNICATION 18"X24")

780-1-12 465 LF (3-#4 @ 155 LF)  
 783-4-112 1240 LF (8-2" RUNS @ 155 LF)

780-1-12 465 LF (3-#4 @ 155 LF)  
 783-4-112 1240 LF (8-2" RUNS @ 155 LF)

SEE SHEET IT-20

780-1-12	180 LF (3-#4 @ 60 LF)
780-1-13	1 EA (POWER OUTLET PANEL)
783-4-111	31 LF (2" RIGID)
783-4-111	50 LF (2" FLEX)
783-4-111	96 LF (NEMA 3R CABLE TRAY)
783-4-112	140 LF (1" CONDUIT)
783-4-112	364 LF (2" CONDUIT)
783-7-1	4 EA (COMMUNICATION 18"X24")



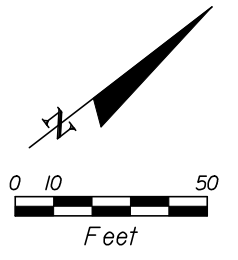
REVISIONS			
DATE	DESCRIPTION	DATE	DESCRIPTION
12/15/09	GENERATOR PAY ITEM NUMBER, DESCRIPTION		

**HNTB**  
 10210 Highland Manor Drive - Suite 140 - Tampa, FL 33610  
 (813) 246-5527 - Cert. of Auth. No. EB6500  
 Engineer of Record: Malcolm Y. Tomatani, P.E. No: 65465

TAMPA - HILLSBOROUGH EXPRESSWAY AUTHORITY		
ROAD NO.	COUNTY	FINANCIAL PROJECT ID
SR 618	HILLSBOROUGH	

**ITS PLAN**  
**WEST MAINLINE/PLANT AVE**

SHEET NO.  
 IT-7



SEE SHEET IT-19

641-2-11	1 EA (PEDESTAL)
780-1-12	180 LF (3-*4 @ 60 LF)
780-1-13	1 EA (DISTRIBUTION PANEL)
780-1-13	1 EA (POWER OUTLET PANEL)
783-1-121	20 LF (12 STR SM)
783-3-14	1 EA (BUFFER TUBE FAN OUT KIT)
783-3-16	12 EA (TERMINATION)
783-3-17	2 EA (CONNECTION PANEL)
783-4-111	25 LF (2" RIGID)
783-4-111	4 LF (3" RIGID)
783-4-111	50 LF (2" FLEX)
783-4-111	96 LF (NEMA 3R CABLE TRAY)
783-4-112	140 LF (1" CONDUIT)
783-4-112	364 LF (2" CONDUIT)
783-4-112	10 LF (3" CONDUIT)
783-5-1	1 EA (THEA ITS)
783-7-1	5 EA (COMMUNICATION 18"X24")

SEE SHEET IT-14

(2-12 STR SM COILED) 60 LF	783-1-111
(SPLICE) 6 EA	783-2-31
(SPLICE ENCLOSURE) 1 EA	783-3-11
(SPLICE TRAY) 1 EA	783-3-12
(NEMA 1 HINGED 12"X30"X30") 1 EA	783-7-1

SEE SHEET IT-15

(2-12 STR SM) 276 LF	783-1-111
(SCH 40 PVC 1-2" RUN) 70 LF	783-4-111
(FLEX 1-2" RUN) 25 LF	783-4-111
(RIGID 1-2" RUN) 33 LF	783-4-111

SEE SHEET IT-19

(PEDESTAL) 1 EA	641-2-11
(3-*4 @ 60 LF) 180 LF	780-1-12
(DISTRIBUTION PANEL) 1 EA	780-1-13
(POWER OUTLET PANEL) 1 EA	780-1-13
(12 STR SM) 20 LF	783-1-121
(BUFFER TUBE FAN OUT KIT) 1 EA	783-3-14
(TERMINATION) 12 EA	783-3-16
(CONNECTION PANEL) 2 EA	783-3-17
(2" RIGID) 25 LF	783-4-111
(3" RIGID) 4 LF	783-4-111
(2" FLEX) 50 LF	783-4-111
(NEMA 3R CABLE TRAY) 96 LF	783-4-111
(1" CONDUIT) 140 LF	783-4-112
(2" CONDUIT) 364 LF	783-4-112
(3" CONDUIT) 10 LF	783-4-112
(THEA ITS) 1 EA	783-5-1
(COMMUNICATION 18"X24") 5 EA	783-7-1

(12 STR SM COILED) 50 LF	783-1-121
(THEA ITS) 1 EA	783-5-1
(POWER 18"X24"X18") 1 EA	783-7-1

55 LF	555-1-2
(3-*4/0, 1-*2/0 @ 55 LF) 220 LF	780-1-12
(12 STR SM) 55 LF	783-1-121
(2-2" RUNS @ 55 LF) 110 LF	783-4-112
(1-3" RUN) 55 LF	783-4-112

783-1-121	50 LF (12 STR SM COILED)
783-5-1	1 EA (THEA ITS)
783-7-1	2 EA (POWER 18"X24"X18")

780-1-12	160 LF (3-*4/0, 4-*4, 1-*2/0 @ 20 LF)
783-4-112	20 LF (1-1" RUN)
783-4-112	20 LF (1-3" RUN)

SEE SHEET IT-22  
639-4-4A 1 AS (35 KW 120/240VAC GENERATOR)

780-1-12	420 LF (3-*2/0, 1-*1 @ 105 LF)
783-4-112	105 LF (1-3" RUN)

641-2-11	1 EA (PEDESTAL)
780-1-11	1 EA (POWER SERVICE)
780-1-12	40 LF (3-*2/0, 1-*1 @ 10 LF)
783-4-112	10 LF (1-3" RUN)
783-7-1	1 EA (POWER 18"X24"X18")

TECO POLE #076735  
METER 742957 91787052  
240V 3 WIRE/SINGLE PHASE

780-1-12	800 LF (3-*4/0, 1-*2/0 @ 200 LF)
783-1-121	200 LF (12 STR SM)
783-4-112	200 LF (1-2" RUN)
783-4-112	200 LF (1-3" RUN)

783-1-121	50 LF (12 STR SM COILED)
783-5-1	1 EA (THEA ITS)
783-7-1	1 EA (POWER 18"X24"X18")

555-1-2	100 LF
780-1-12	400 LF (3-*4/0, 1-*2/0 @ 100 LF)
783-1-121	100 LF (12 STR SM)
783-4-112	200 LF (2-2" RUNS @ 100 LF)
783-4-112	100 LF (1-3" RUN)

783-1-121	100 LF (2-12 STR SM COILED)
783-5-1	1 EA (THEA ITS)
783-7-1	1 EA (POWER 18"X24"X18")

(12 STR SM COILED) 50 LF	783-1-121
(THEA ITS) 1 EA	783-5-1
(POWER 18"X24"X18") 1 EA	783-7-1

780-1-12	920 LF (3-*4/0, 1-*2/0 @ 230 LF)
783-1-121	230 LF (12 STR SM)
783-4-112	230 LF (1-2" RUN)
783-4-112	230 LF (1-3" RUN)

120 LF	555-1-2
(3-*4/0, 1-*2/0 @ 120 LF) 480 LF	780-1-12
(12 STR SM) 120 LF	783-1-121
(2-2" RUNS @ 120 LF) 240 LF	783-4-112
(1-3" RUN) 120 LF	783-4-112

783-1-121	50 LF (12 STR SM COILED)
783-5-1	1 EA (THEA ITS)
783-7-1	1 EA (POWER 18"X24"X18")

555-1-2	50 LF
780-1-12	200 LF (3-*4/0, 1-*2/0 @ 50 LF)
783-1-121	50 LF (12 STR SM)
783-4-112	100 LF (2-2" RUNS @ 50 LF)
783-4-112	50 LF (1-3" RUN)

783-1-121	50 LF (12 STR SM COILED)
783-5-1	1 EA (THEA ITS)
783-7-1	1 EA (POWER 18"X24"X18")

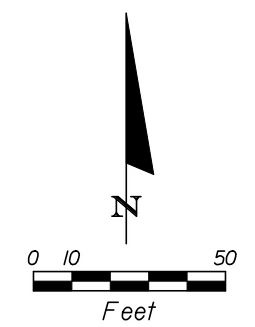
REVISIONS			
DATE	DESCRIPTION	DATE	DESCRIPTION
12/15/09	▲ GENERATOR PAY ITEM NUMBER, DESCRIPTION		

**HNTB**  
10210 Highland Manor Drive - Suite 140 - Tampa, FL 33610  
(813) 246-5527 - Cert. of Auth. No. EB6500  
Engineer of Record: Malcolm Y. Tomatani, P.E. No: 65465

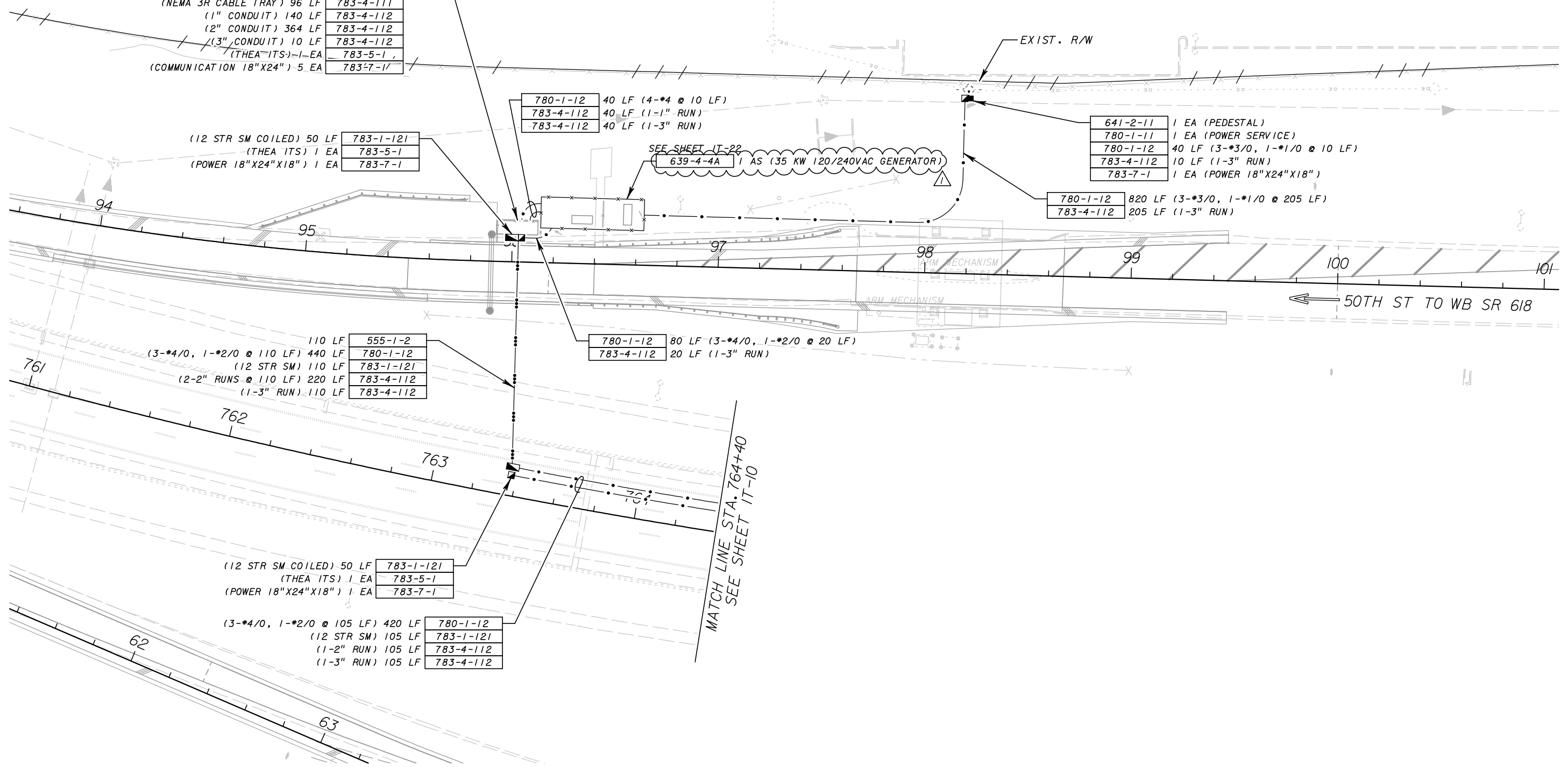
TAMPA - HILLSBOROUGH EXPRESSWAY AUTHORITY		
ROAD NO.	COUNTY	FINANCIAL PROJECT ID
SR 618	HILLSBOROUGH	

**ITS PLAN**  
**22ND ST**

SHEET NO.
IT-8



- SEE SHEET IT-19
- (PEDESTAL) 1 EA 641-2-11
  - (3-\*4 @ 60 LF) 180 LF 780-1-12
  - (DISTRIBUTION PANEL) 1 EA 780-1-13
  - (POWER OUTLET PANEL) 1 EA 780-1-13
  - (12 STR SM) 20 LF 783-1-121
  - (BUFFER TUBE FAN OUT KIT) 1 EA 783-3-14
  - (TERMINATION) 12 EA 783-3-16
  - (CONNECTION PANEL) 2 EA 783-3-17
  - (2" RIGID) 25 LF 783-4-111
  - (3" RIGID) 4 LF 783-4-111
  - (2" FLEX) 50 LF 783-4-111
  - (NEMA 3R CABLE TRAY) 96 LF 783-4-111
  - (1" CONDUIT) 140 LF 783-4-112
  - (2" CONDUIT) 364 LF 783-4-112
  - (1.3" CONDUIT) 10 LF 783-4-112
  - (THEA-ITS)-1-EA 783-5-1
  - (COMMUNICATION 18"X24") 5 EA 783-7-1



- 110 LF 555-1-2
- (3-\*4/0, 1-\*2/0 @ 110 LF) 440 LF 780-1-12
- (12 STR SM) 110 LF 783-1-121
- (2-2" RUNS @ 110 LF) 220 LF 783-4-112
- (1-3" RUN) 110 LF 783-4-112

- (12 STR SM COILED) 50 LF 783-1-121
- (THEA ITS) 1 EA 783-5-1
- (POWER 18"X24"X18") 1 EA 783-7-1

- (3-\*4/0, 1-\*2/0 @ 105 LF) 420 LF 780-1-12
- (12 STR SM) 105 LF 783-1-121
- (1-2" RUN) 105 LF 783-4-112
- (1-3" RUN) 105 LF 783-4-112

- 780-1-12 80 LF (3-\*4/0, 1-\*2/0 @ 20 LF)
- 783-4-112 20 LF (1-3" RUN)

- 641-2-11 1 EA (PEDESTAL)
- 780-1-11 1 EA (POWER SERVICE)
- 780-1-12 40 LF (3-\*3/0, 1-\*1/0 @ 10 LF)
- 783-4-112 10 LF (1-3" RUN)
- 783-7-1 1 EA (POWER 18"X24"X18")

- 780-1-12 820 LF (3-\*3/0, 1-\*1/0 @ 205 LF)
- 783-4-112 205 LF (1-3" RUN)

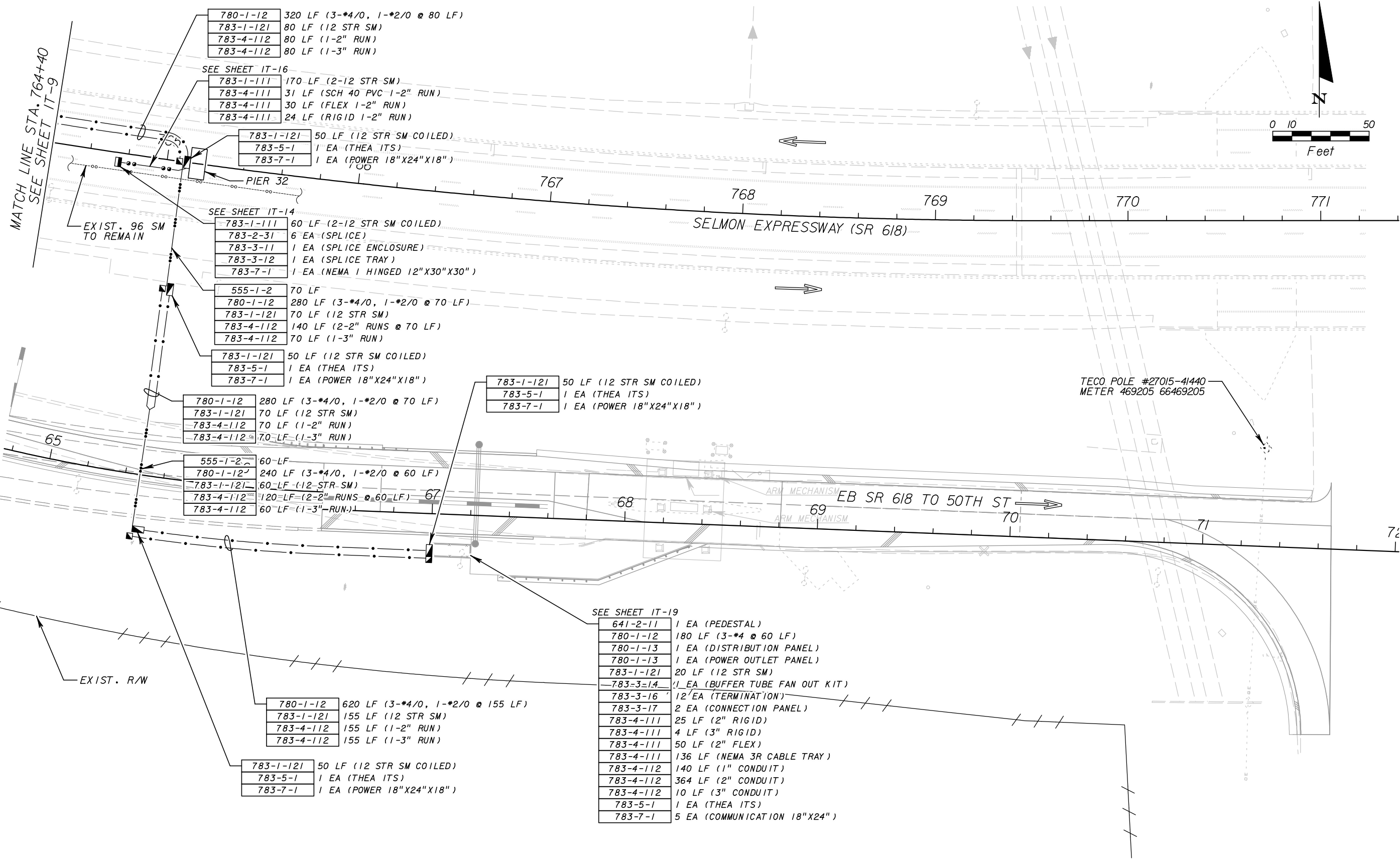
REVISIONS			
DATE	DESCRIPTION	DATE	DESCRIPTION
12/15/09	1 GENERATOR PAY ITEM NUMBER, DESCRIPTION		

**HNTB**  
 10210 Highland Manor Drive - Suite 140 - Tampa, FL 33610  
 (813) 246-5527 - Cert. of Auth. No. EB6500  
 Engineer of Record: Malcolm Y. Tomatani, P.E. No: 65465

TAMPA - HILLSBOROUGH EXPRESSWAY AUTHORITY		
ROAD NO.	COUNTY	FINANCIAL PROJECT ID
SR 618	HILLSBOROUGH	

**ITS PLAN**  
**50TH ST WB**

SHEET NO.	IT-9
-----------	------



- 780-1-12 320 LF (3-#4/0, 1-#2/0 @ 80 LF)
- 783-1-121 80 LF (12 STR SM)
- 783-4-112 80 LF (1-2" RUN)
- 783-4-112 80 LF (1-3" RUN)

- SEE SHEET IT-16
- 783-1-111 170 LF (2-12 STR SM)
  - 783-4-111 31 LF (SCH 40 PVC 1-2" RUN)
  - 783-4-111 30 LF (FLEX 1-2" RUN)
  - 783-4-111 24 LF (RIGID 1-2" RUN)

- 783-1-121 50 LF (12 STR SM COILED)
- 783-5-1 1 EA (THEA ITS)
- 783-7-1 1 EA (POWER 18"X24"X18")

- SEE SHEET IT-14
- 783-1-111 60 LF (2-12 STR SM COILED)
  - 783-2-31 6 EA (SPLICE)
  - 783-3-11 1 EA (SPLICE ENCLOSURE)
  - 783-3-12 1 EA (SPLICE TRAY)
  - 783-7-1 1 EA (NEMA 1 HINGED 12"X30"X30")

- 555-1-2 70 LF
- 780-1-12 280 LF (3-#4/0, 1-#2/0 @ 70 LF)
- 783-1-121 70 LF (12 STR SM)
- 783-4-112 140 LF (2-2" RUNS @ 70 LF)
- 783-4-112 70 LF (1-3" RUN)

- 783-1-121 50 LF (12 STR SM COILED)
- 783-5-1 1 EA (THEA ITS)
- 783-7-1 1 EA (POWER 18"X24"X18")

- 780-1-12 280 LF (3-#4/0, 1-#2/0 @ 70 LF)
- 783-1-121 70 LF (12 STR SM)
- 783-4-112 70 LF (1-2" RUN)
- 783-4-112 70 LF (1-3" RUN)

- 555-1-2 60 LF
- 780-1-12 240 LF (3-#4/0, 1-#2/0 @ 60 LF)
- 783-1-121 60 LF (12 STR SM)
- 783-4-112 120 LF (2-2" RUNS @ 60 LF)
- 783-4-112 60 LF (1-3" RUN)

- 783-1-121 50 LF (12 STR SM COILED)
- 783-5-1 1 EA (THEA ITS)
- 783-7-1 1 EA (POWER 18"X24"X18")

- 780-1-12 620 LF (3-#4/0, 1-#2/0 @ 155 LF)
- 783-1-121 155 LF (12 STR SM)
- 783-4-112 155 LF (1-2" RUN)
- 783-4-112 155 LF (1-3" RUN)

- 783-1-121 50 LF (12 STR SM COILED)
- 783-5-1 1 EA (THEA ITS)
- 783-7-1 1 EA (POWER 18"X24"X18")

- SEE SHEET IT-19
- 641-2-11 1 EA (PEDESTAL)
  - 780-1-12 180 LF (3-#4 @ 60 LF)
  - 780-1-13 1 EA (DISTRIBUTION PANEL)
  - 780-1-13 1 EA (POWER OUTLET PANEL)
  - 783-1-121 20 LF (12 STR SM)
  - 783-3-14 1 EA (BUFFER TUBE FAN OUT KIT)
  - 783-3-16 12 EA (TERMINATION)
  - 783-3-17 2 EA (CONNECTION PANEL)
  - 783-4-111 25 LF (2" RIGID)
  - 783-4-111 4 LF (3" RIGID)
  - 783-4-111 50 LF (2" FLEX)
  - 783-4-111 136 LF (NEMA 3R CABLE TRAY)
  - 783-4-112 140 LF (1" CONDUIT)
  - 783-4-112 364 LF (2" CONDUIT)
  - 783-4-112 10 LF (3" CONDUIT)
  - 783-5-1 1 EA (THEA ITS)
  - 783-7-1 5 EA (COMMUNICATION 18"X24")

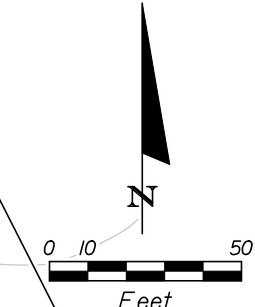
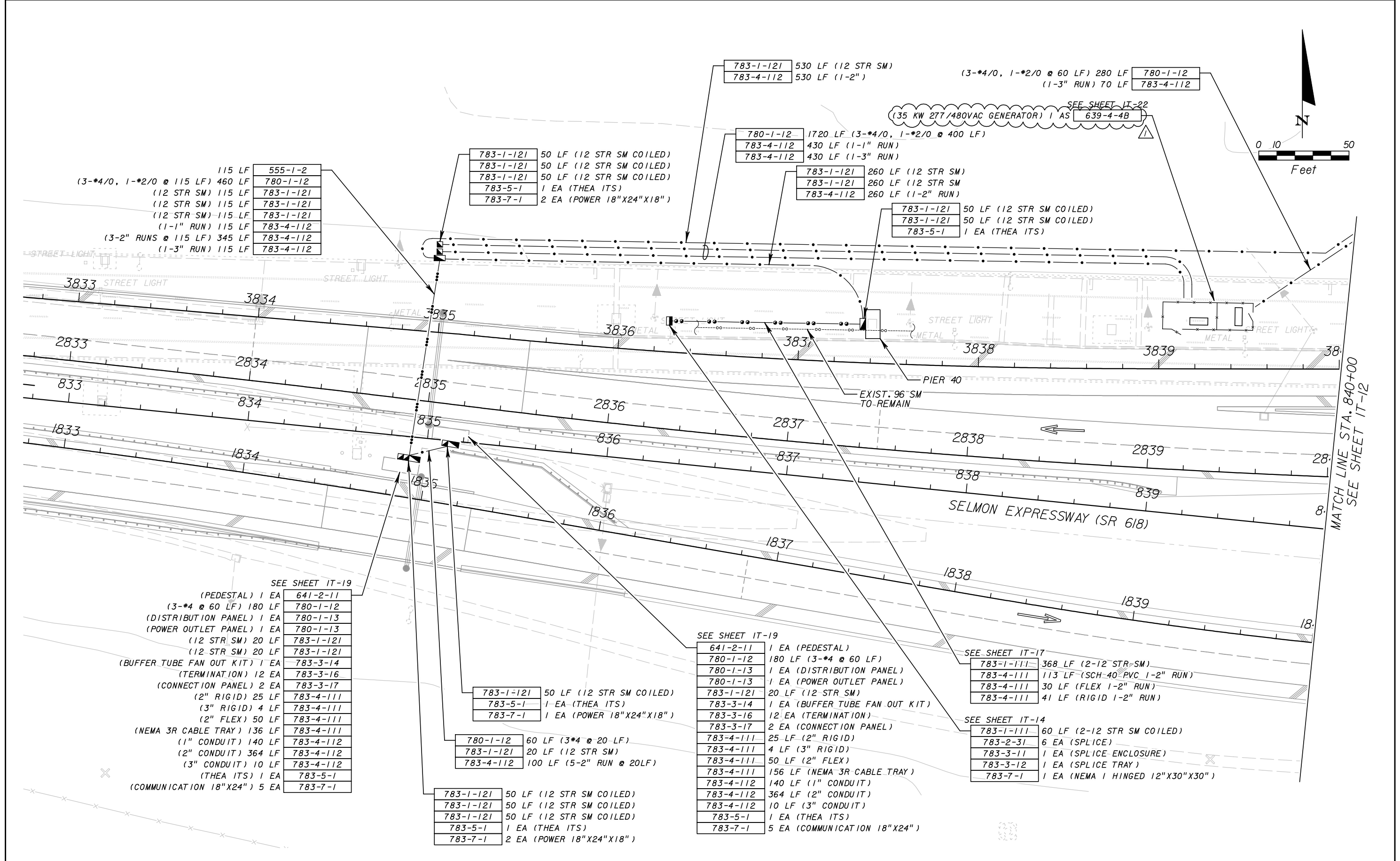
REVISIONS			
DATE	DESCRIPTION	DATE	DESCRIPTION

**HNTB**  
 10210 Highland Manor Drive - Suite 140 - Tampa, FL 33610  
 (813) 246-5527 - Cert. of Auth. No. EB6500  
 Engineer of Record: Malcolm Y. Tomatani, P.E. No: 65465

TAMPA - HILLSBOROUGH EXPRESSWAY AUTHORITY		
ROAD NO.	COUNTY	FINANCIAL PROJECT ID
SR 618	HILLSBOROUGH	

**ITS PLAN**  
**50TH ST EB**

SHEET NO.	IT-10
-----------	-------



115 LF	555-1-2
(3-*4/0, 1-*2/0 @ 115 LF) 460 LF	780-1-12
(12 STR SM) 115 LF	783-1-121
(12 STR SM) 115 LF	783-1-121
(12 STR SM) 115 LF	783-1-121
(1-1" RUN) 115 LF	783-4-112
(3-2" RUNS @ 115 LF) 345 LF	783-4-112
(1-3" RUN) 115 LF	783-4-112

783-1-121	50 LF (12 STR SM COILED)
783-1-121	50 LF (12 STR SM COILED)
783-1-121	50 LF (12 STR SM COILED)
783-5-1	1 EA (THEA ITS)
783-7-1	2 EA (POWER 18"X24"X18")

783-1-121	530 LF (12 STR SM)
783-4-112	530 LF (1-2")

(3-*4/0, 1-*2/0 @ 60 LF) 280 LF	780-1-12
(1-3" RUN) 70 LF	783-4-112

780-1-12	1720 LF (3-*4/0, 1-*2/0 @ 400 LF)
783-4-112	430 LF (1-1" RUN)
783-4-112	430 LF (1-3" RUN)

783-1-121	260 LF (12 STR SM)
783-1-121	260 LF (12 STR SM)
783-4-112	260 LF (1-2" RUN)

783-1-121	50 LF (12 STR SM COILED)
783-1-121	50 LF (12 STR SM COILED)
783-5-1	1 EA (THEA ITS)

SEE SHEET IT-19

(PEDESTAL) 1 EA	641-2-11
(3-*4 @ 60 LF) 180 LF	780-1-12
(DISTRIBUTION PANEL) 1 EA	780-1-13
(POWER OUTLET PANEL) 1 EA	780-1-13
(12 STR SM) 20 LF	783-1-121
(12 STR SM) 20 LF	783-1-121
(BUFFER TUBE FAN OUT KIT) 1 EA	783-3-14
(TERMINATION) 12 EA	783-3-16
(CONNECTION PANEL) 2 EA	783-3-17
(2" RIGID) 25 LF	783-4-111
(3" RIGID) 4 LF	783-4-111
(2" FLEX) 50 LF	783-4-111
(NEMA 3R CABLE TRAY) 136 LF	783-4-111
(1" CONDUIT) 140 LF	783-4-112
(2" CONDUIT) 364 LF	783-4-112
(3" CONDUIT) 10 LF	783-4-112
(THEA ITS) 1 EA	783-5-1
(COMMUNICATION 18"X24") 5 EA	783-7-1

783-1-121	50 LF (12 STR SM COILED)
783-5-1	1 EA (THEA ITS)
783-7-1	1 EA (POWER 18"X24"X18")

780-1-12	60 LF (3*4 @ 20 LF)
783-1-121	20 LF (12 STR SM)
783-4-112	100 LF (5-2" RUN @ 20LF)

783-1-121	50 LF (12 STR SM COILED)
783-1-121	50 LF (12 STR SM COILED)
783-1-121	50 LF (12 STR SM COILED)
783-5-1	1 EA (THEA ITS)
783-7-1	2 EA (POWER 18"X24"X18")

SEE SHEET IT-19

641-2-11	1 EA (PEDESTAL)
780-1-12	180 LF (3-*4 @ 60 LF)
780-1-13	1 EA (DISTRIBUTION PANEL)
780-1-13	1 EA (POWER OUTLET PANEL)
783-1-121	20 LF (12 STR SM)
783-3-14	1 EA (BUFFER TUBE FAN OUT KIT)
783-3-16	12 EA (TERMINATION)
783-3-17	2 EA (CONNECTION PANEL)
783-4-111	25 LF (2" RIGID)
783-4-111	4 LF (3" RIGID)
783-4-111	50 LF (2" FLEX)
783-4-111	156 LF (NEMA 3R CABLE TRAY)
783-4-112	140 LF (1" CONDUIT)
783-4-112	364 LF (2" CONDUIT)
783-4-112	10 LF (3" CONDUIT)
783-5-1	1 EA (THEA ITS)
783-7-1	5 EA (COMMUNICATION 18"X24")

SEE SHEET IT-17

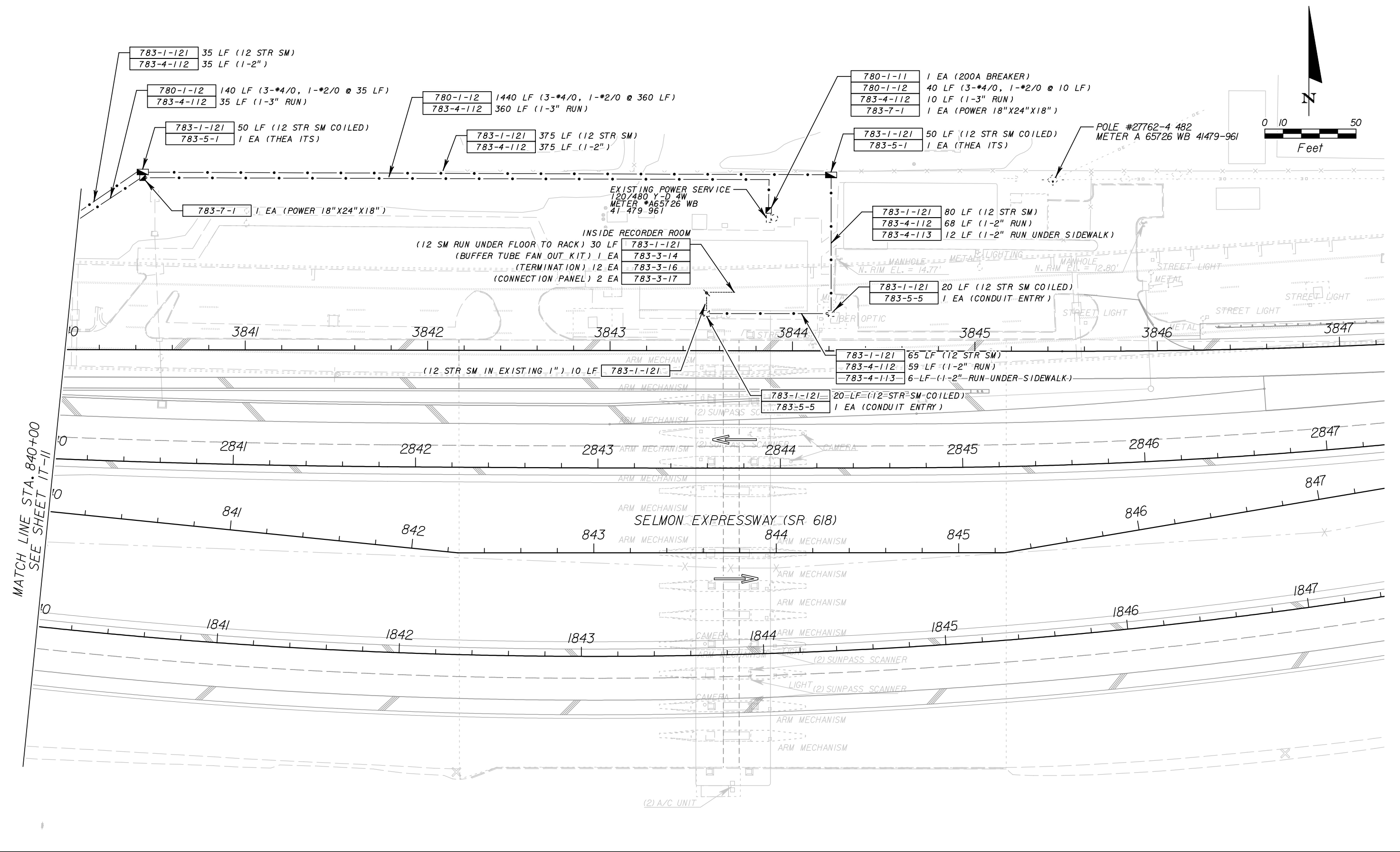
783-1-111	368 LF (2-12 STR SM)
783-4-111	113 LF (SCH 40 PVC 1-2" RUN)
783-4-111	30 LF (FLEX 1-2" RUN)
783-4-111	41 LF (RIGID 1-2" RUN)

SEE SHEET IT-14

783-1-111	60 LF (2-12 STR SM COILED)
783-2-31	6 EA (SPLICE)
783-3-11	1 EA (SPLICE ENCLOSURE)
783-3-12	1 EA (SPLICE TRAY)
783-7-1	1 EA (NEMA 1 HINGED 12"X30"X30")

REVISIONS				 10210 Highland Manor Drive - Suite 140 - Tampa, FL 33610 (813) 246-5527 - Cert. of Auth. No. EB6500 Engineer of Record: Malcolm Y. Tomatani, P.E. No: 65465	TAMPA - HILLSBOROUGH EXPRESSWAY AUTHORITY			ITS PLAN EAST MAINLINE	SHEET NO. IT-11
DATE	DESCRIPTION	DATE	DESCRIPTION		ROAD NO.	COUNTY	FINANCIAL PROJECT ID		
12/15/09	1 GENERATOR PAY ITEM NUMBER, DESCRIPTION			SR 618	HILLSBOROUGH				





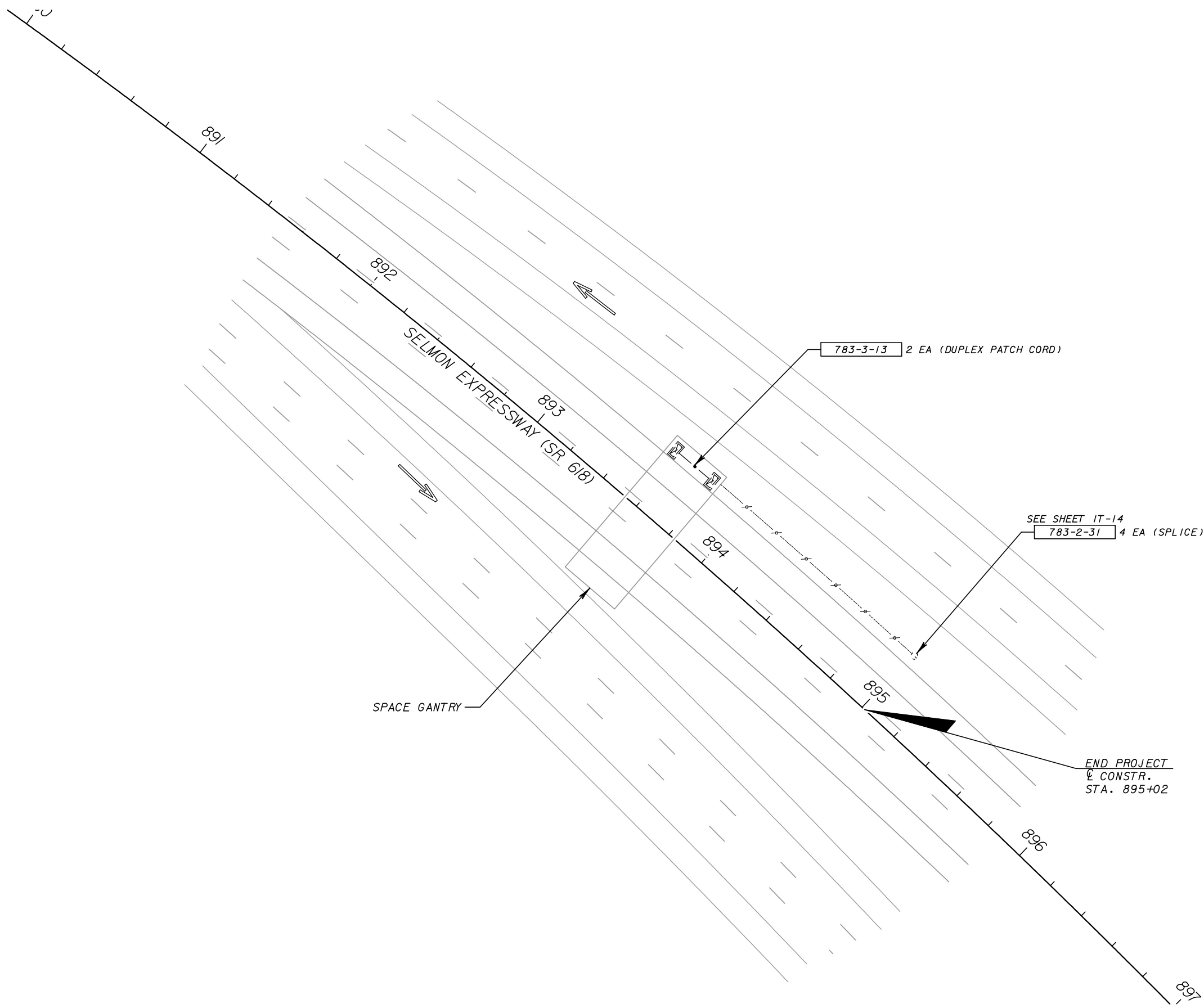
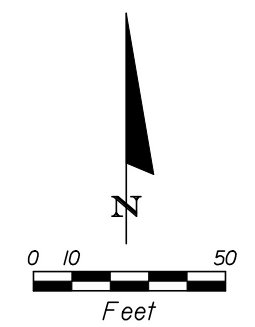
REVISIONS			
DATE	DESCRIPTION	DATE	DESCRIPTION

**HNTB**  
 10210 Highland Manor Drive - Suite 140 - Tampa, FL 33610  
 (813) 246-5527 - Cert. of Auth. No. EB6500  
 Engineer of Record: Malcolm Y. Tomatani, P.E. No: 65465

TAMPA - HILLSBOROUGH EXPRESSWAY AUTHORITY		
ROAD NO.	COUNTY	FINANCIAL PROJECT ID
SR 618	HILLSBOROUGH	

**ITS PLAN**  
**EAST MAINLINE**

SHEET NO.  
 IT-12



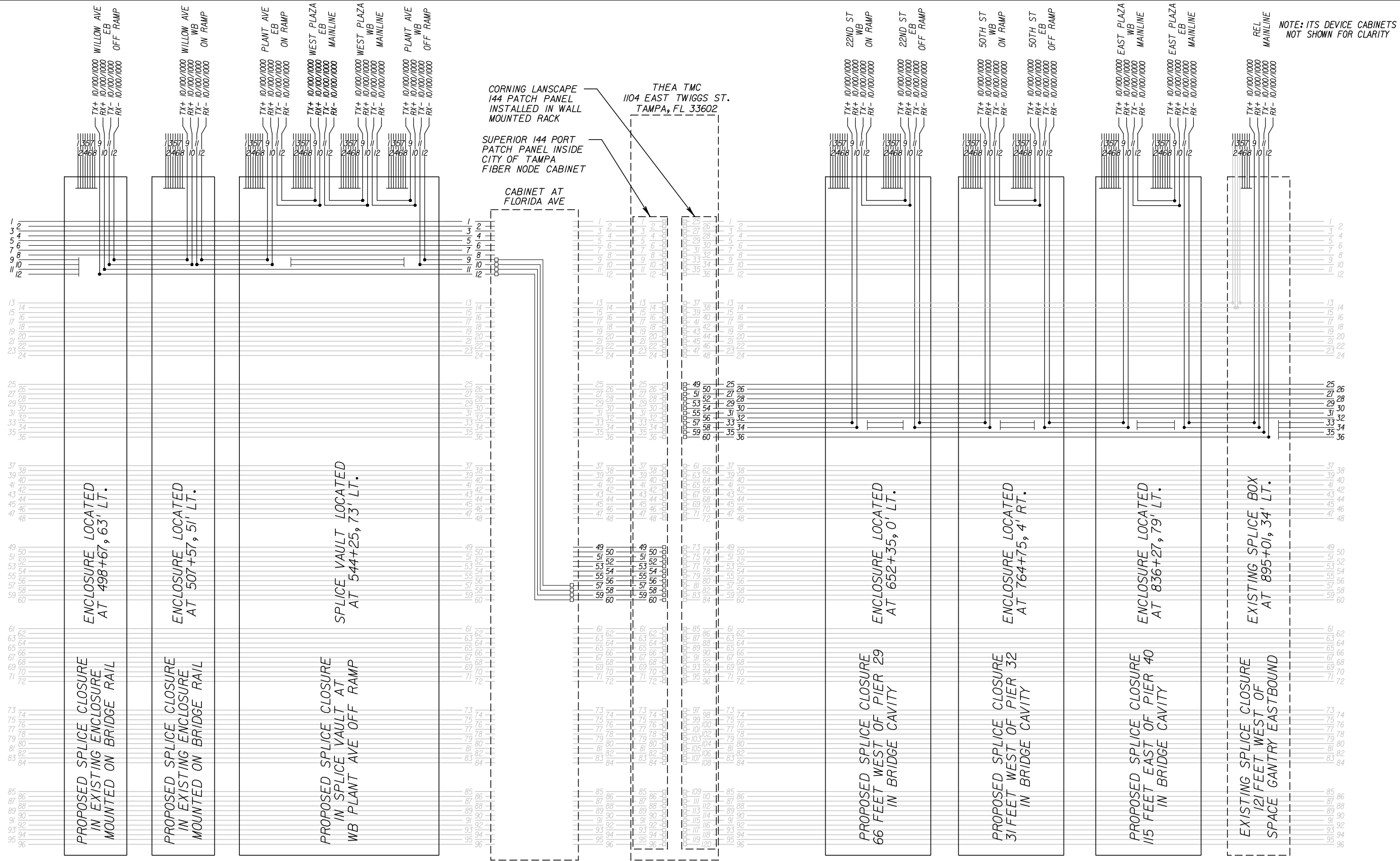
783-3-13 2 EA (DUPLEX PATCH CORD)

SEE SHEET IT-14  
783-2-31 4 EA (SPLICE)

SPACE GANTRY

END PROJECT  
CONSTR.  
STA. 895+02

REVISIONS				<b>HNTB</b> 10210 Highland Manor Drive - Suite 140 - Tampa, FL 33610 (813) 246-5527 - Cert. of Auth. No. EB6500 Engineer of Record: Malcolm Y. Tomatani, P.E. No: 65465	TAMPA - HILLSBOROUGH EXPRESSWAY AUTHORITY			ITS PLAN SPACE GANTRY	SHEET NO.
DATE	DESCRIPTION	DATE	DESCRIPTION		ROAD NO.	COUNTY	FINANCIAL PROJECT ID		IT-13
				SR 618	HILLSBOROUGH				



NOTE: ITS DEVICE CABINETS NOT SHOWN FOR CLARITY

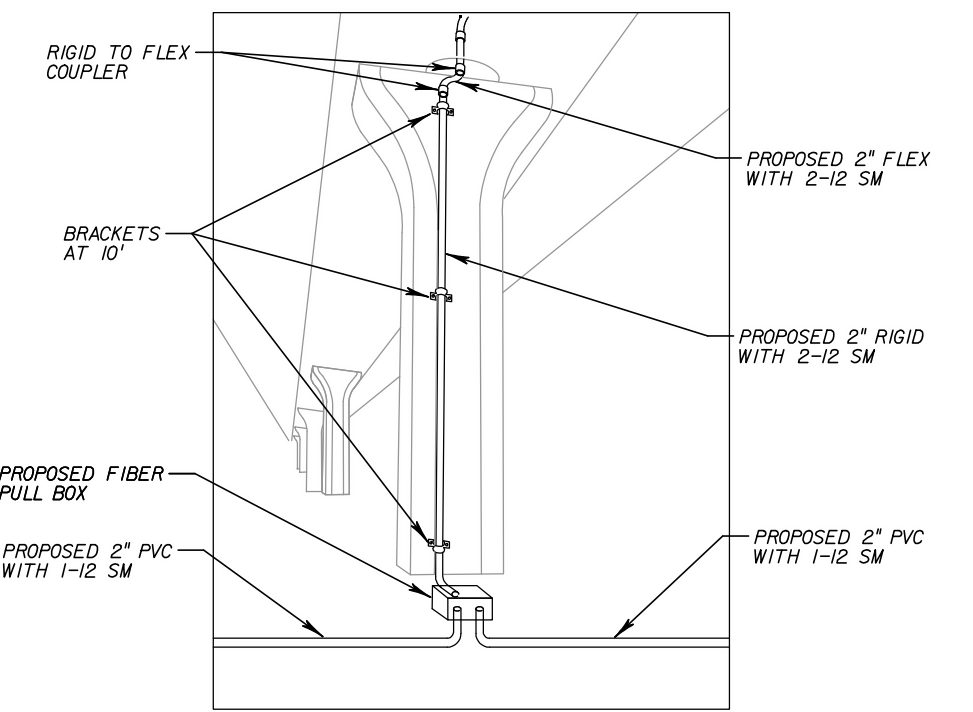
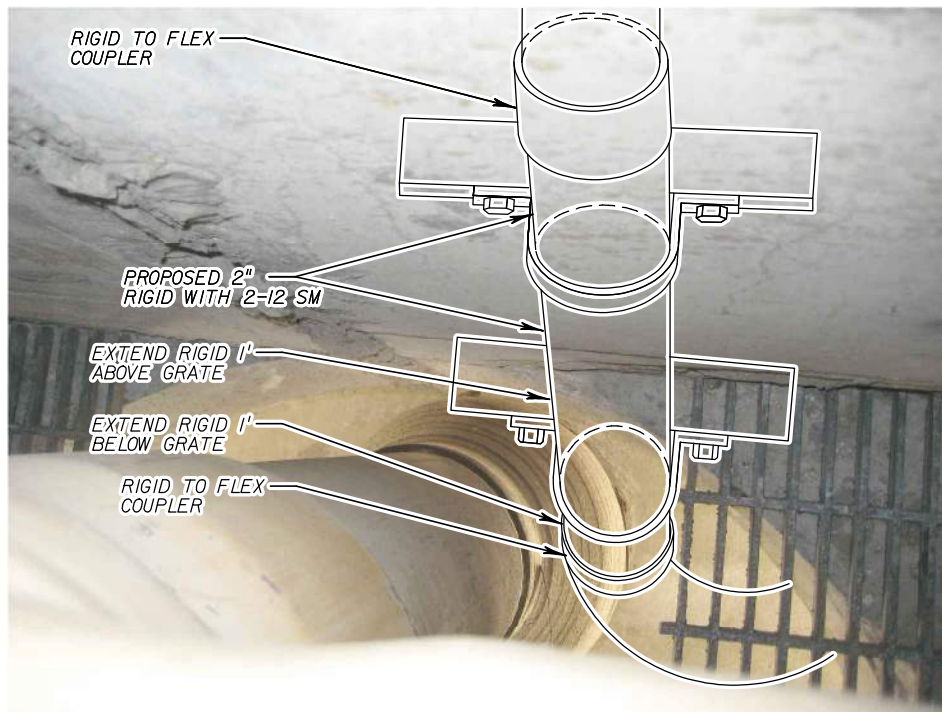
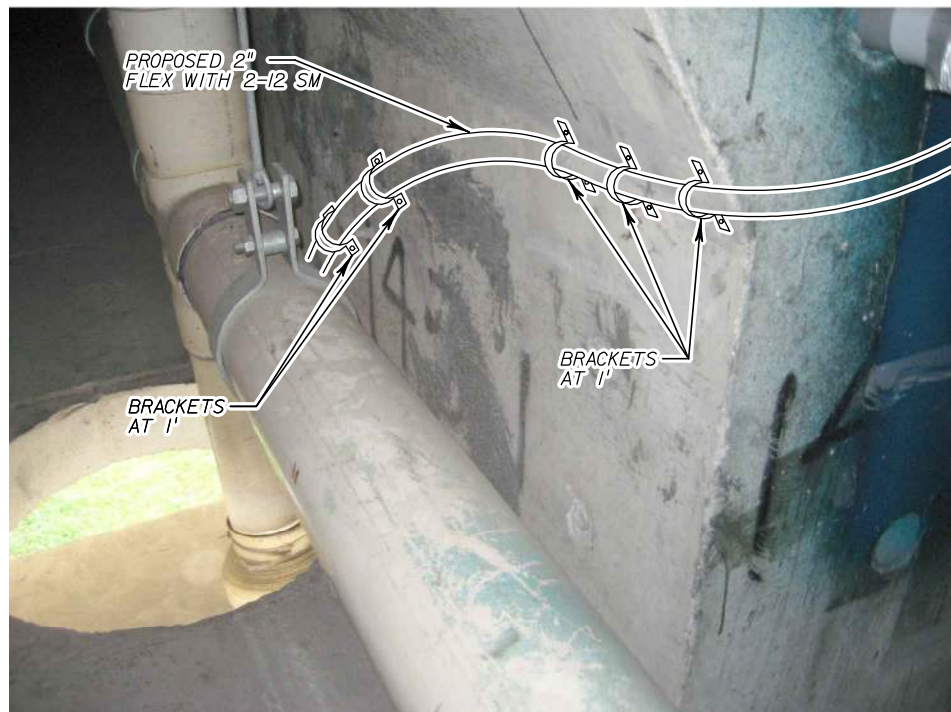
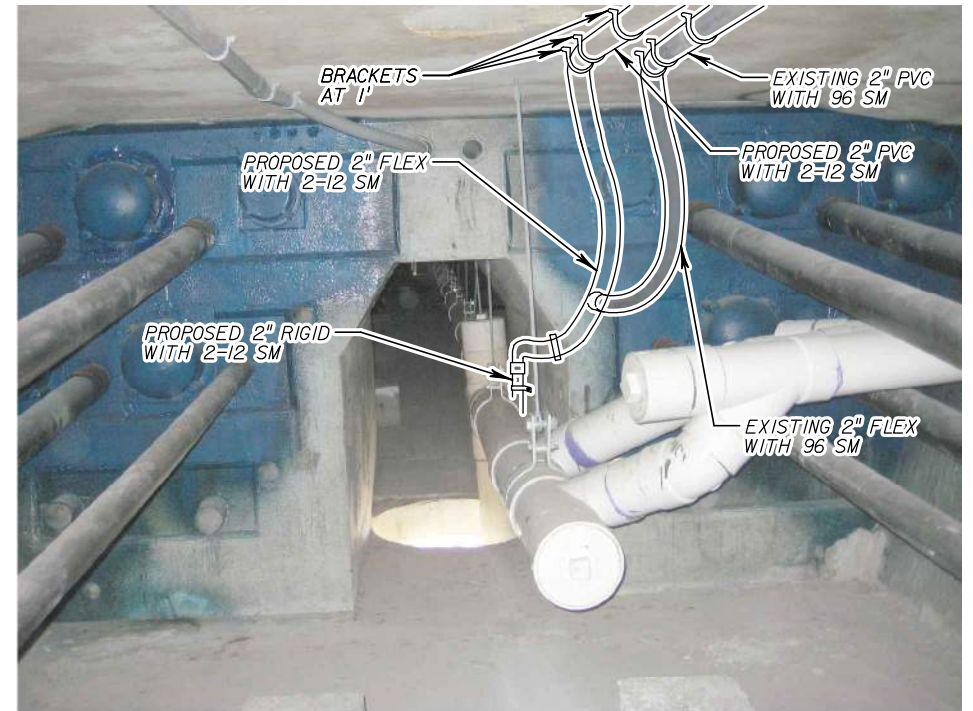
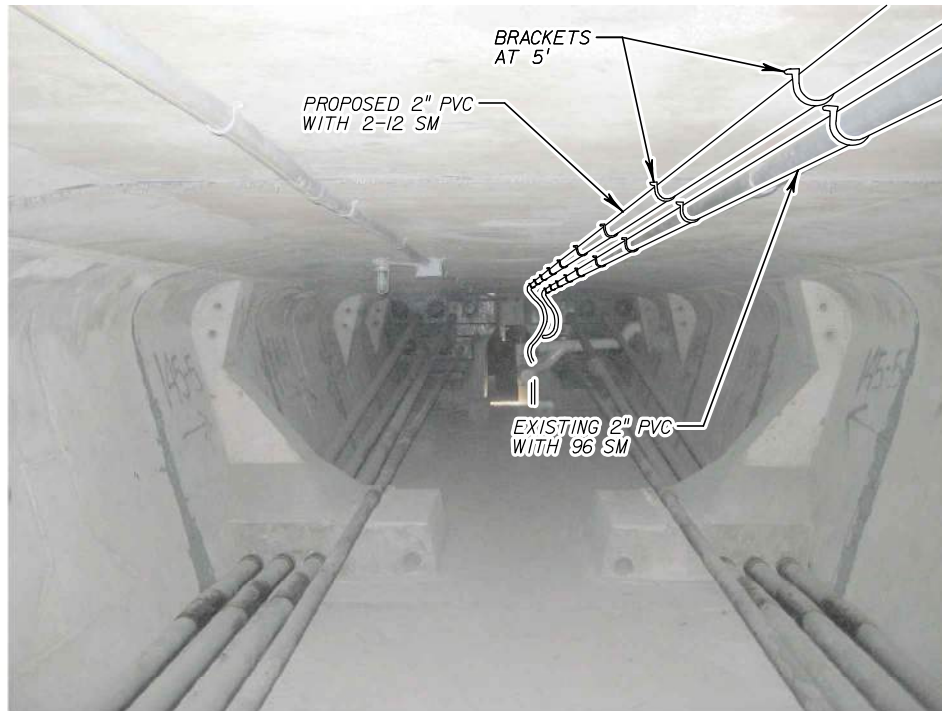
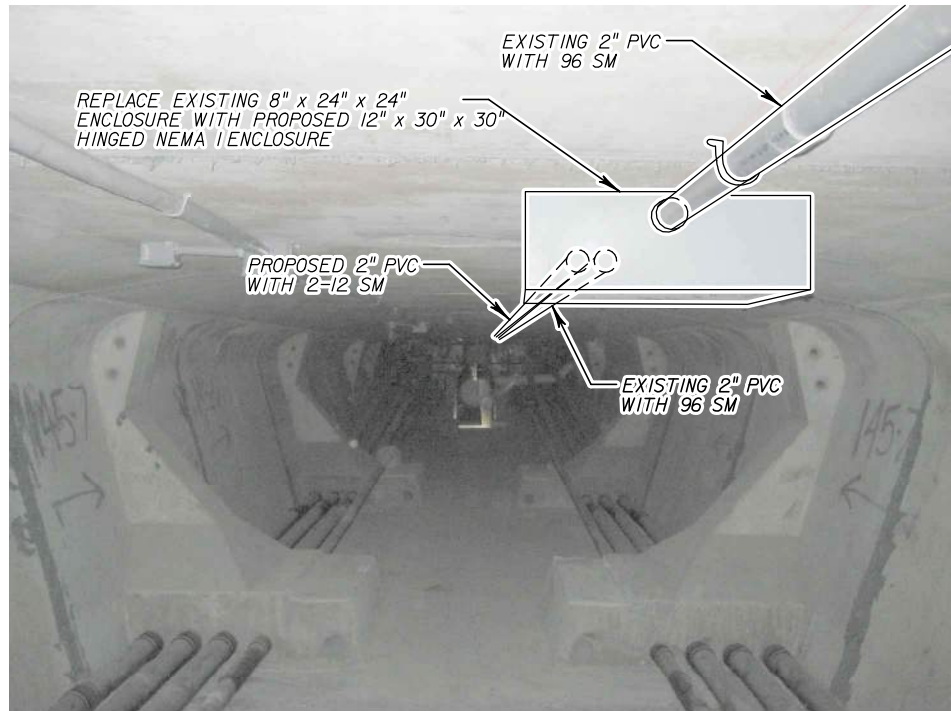
REVISIONS			
DATE	DESCRIPTION	DATE	DESCRIPTION

**HNTB**  
 10210 Highland Manor Drive - Suite 140 - Tampa, FL 33610  
 (813) 246-5527 - Cert. of Auth. No. EB6500  
 Engineer of Record: Malcolm Y. Tomatani, P.E. No: 65465

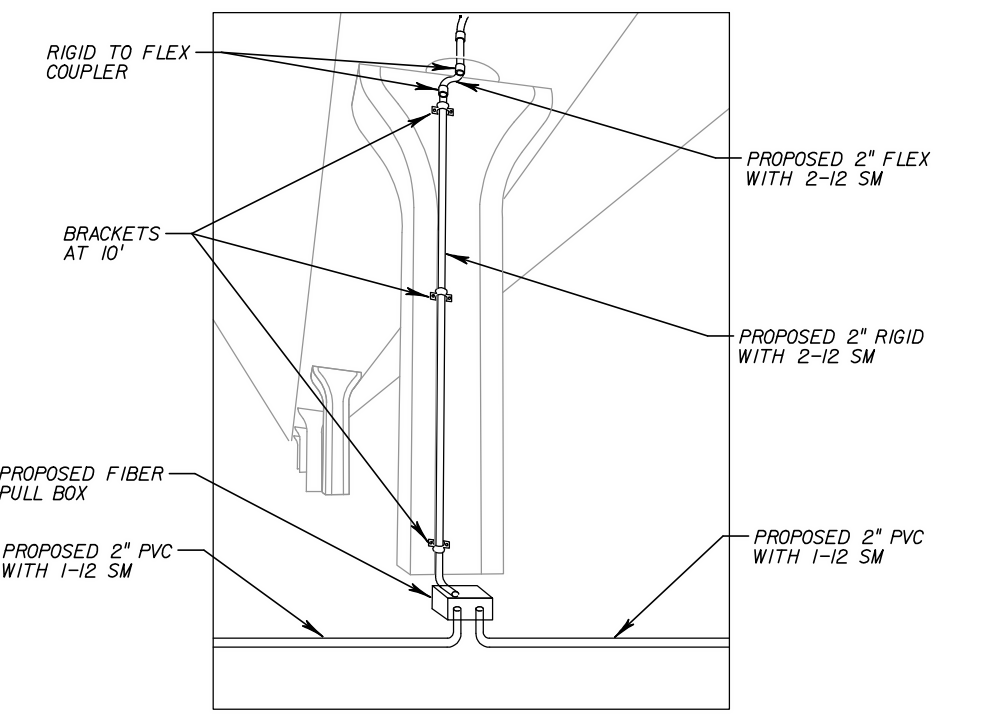
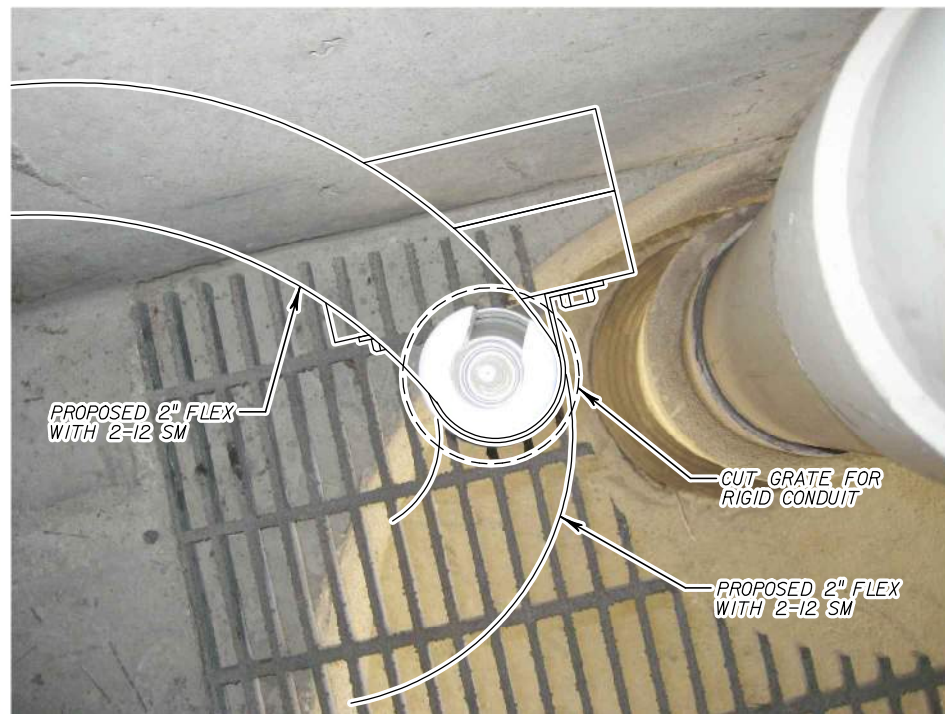
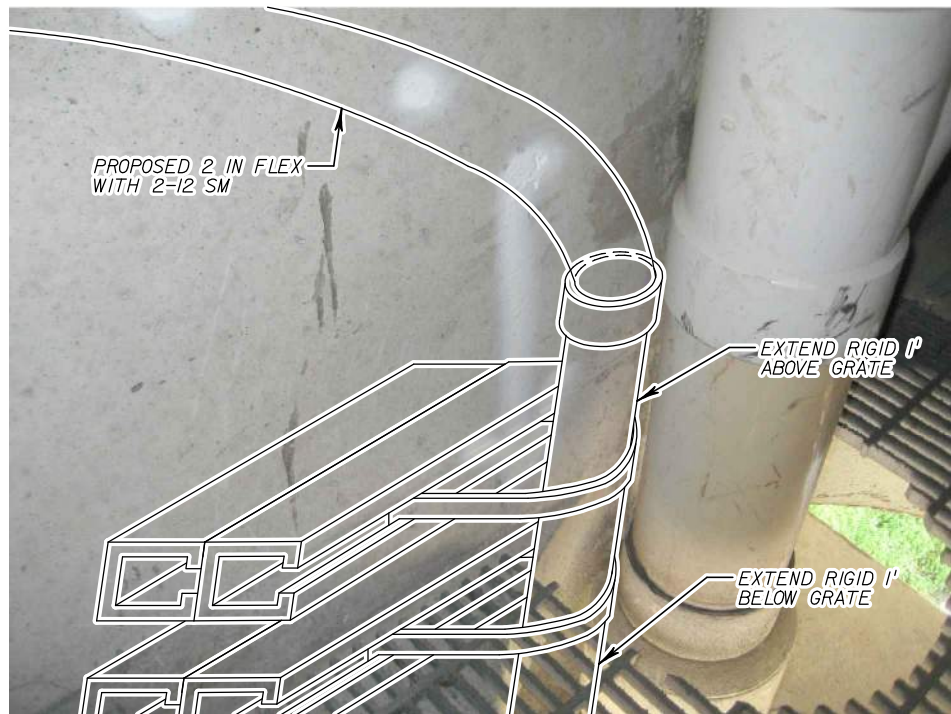
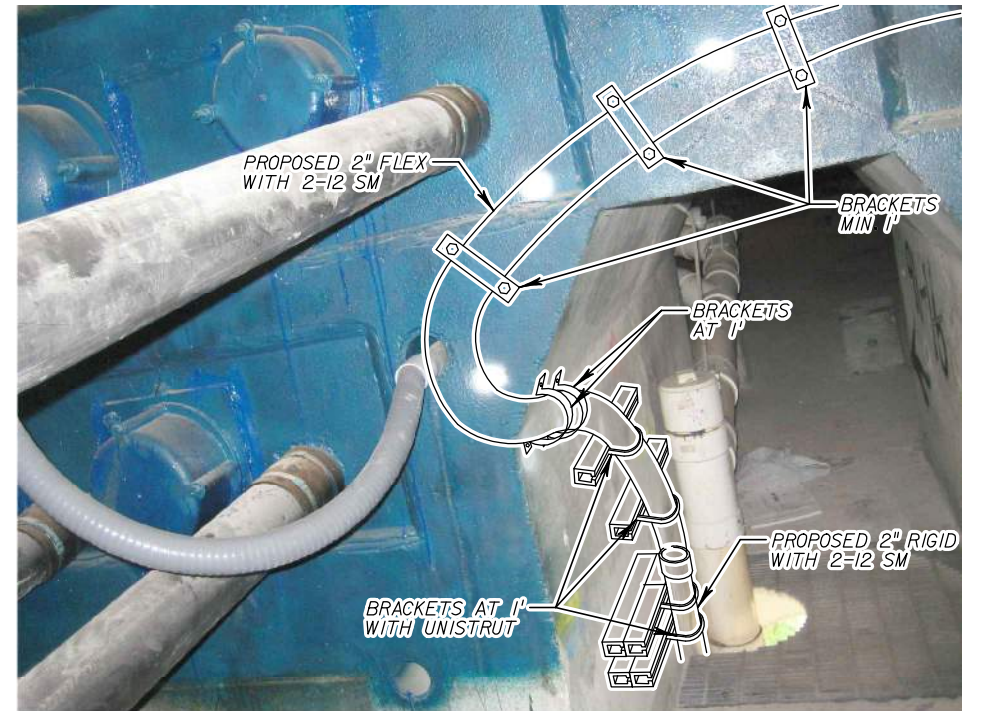
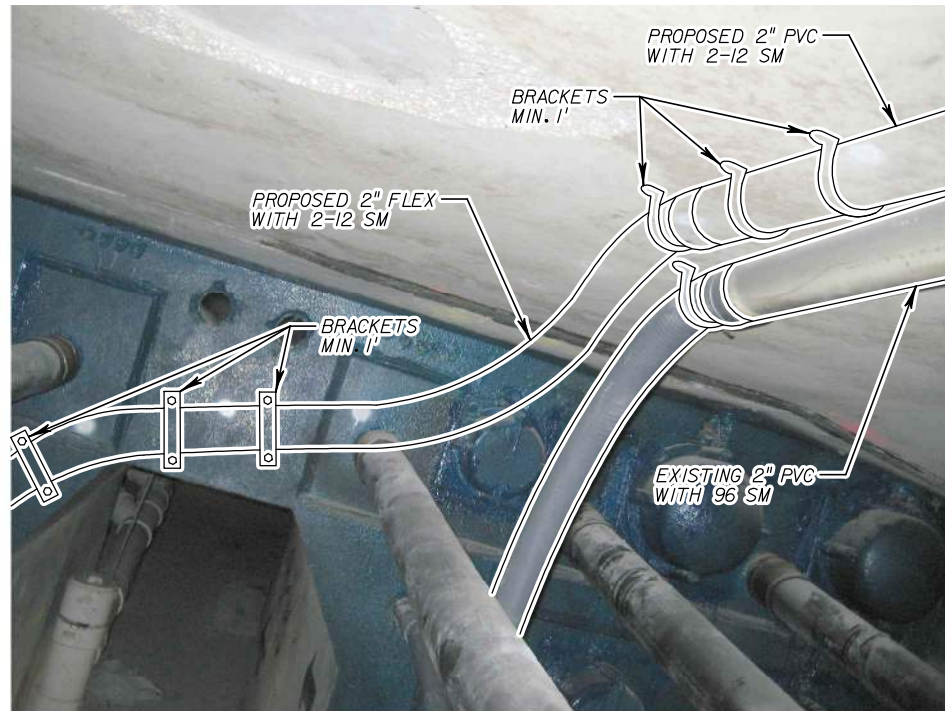
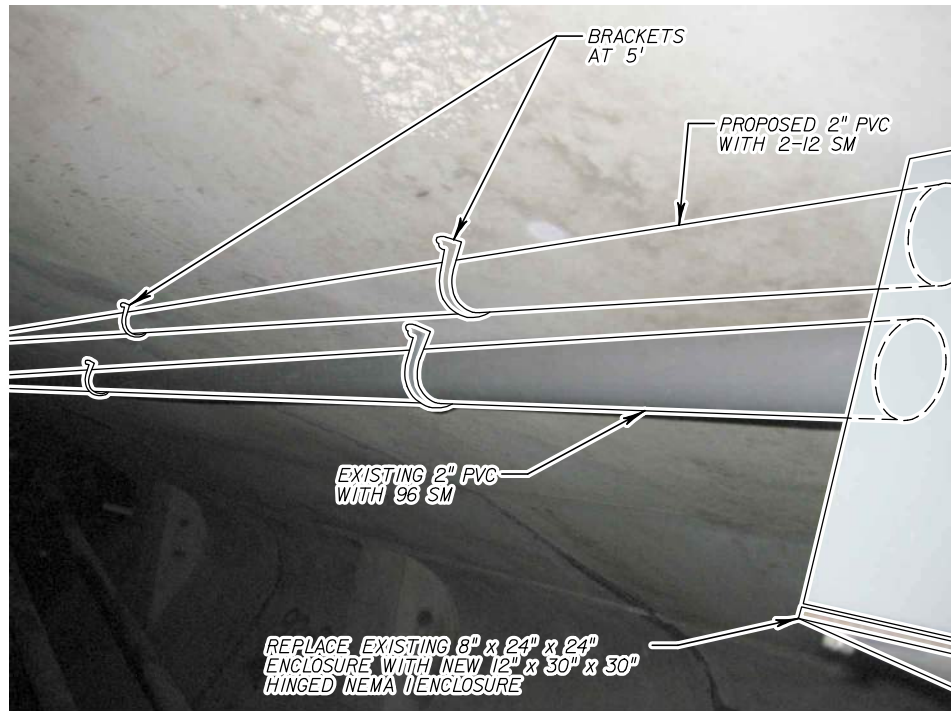
TAMPA - HILLSBOROUGH EXPRESSWAY AUTHORITY		
ROAD NO.	COUNTY	FINANCIAL PROJECT ID
SR 618	HILLSBOROUGH	

**SPLICE DIAGRAM**

SHEET NO.  
IT-14



REVISIONS				<b>HNTB</b> 10210 Highland Manor Drive - Suite 140 - Tampa, FL 33610 (813) 246-5527 - Cert. of Auth. No. EB6500 Engineer of Record: Malcolm Y. Tomatani, P.E. No: 65465	<b>TAMPA - HILLSBOROUGH EXPRESSWAY AUTHORITY</b>			<b>CONDUIT MOUNTING DETAILS</b> <b>22ND STREET</b>	SHEET NO. IT-15
DATE	DESCRIPTION	DATE	DESCRIPTION		ROAD NO.	COUNTY	FINANCIAL PROJECT ID		
				SR 618	HILLSBOROUGH				



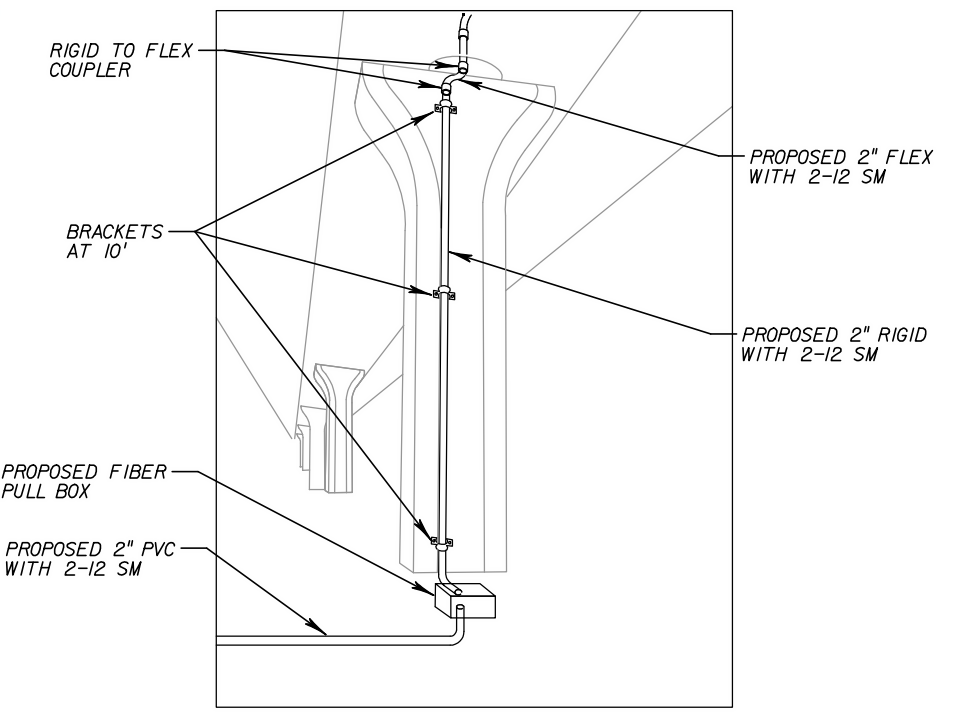
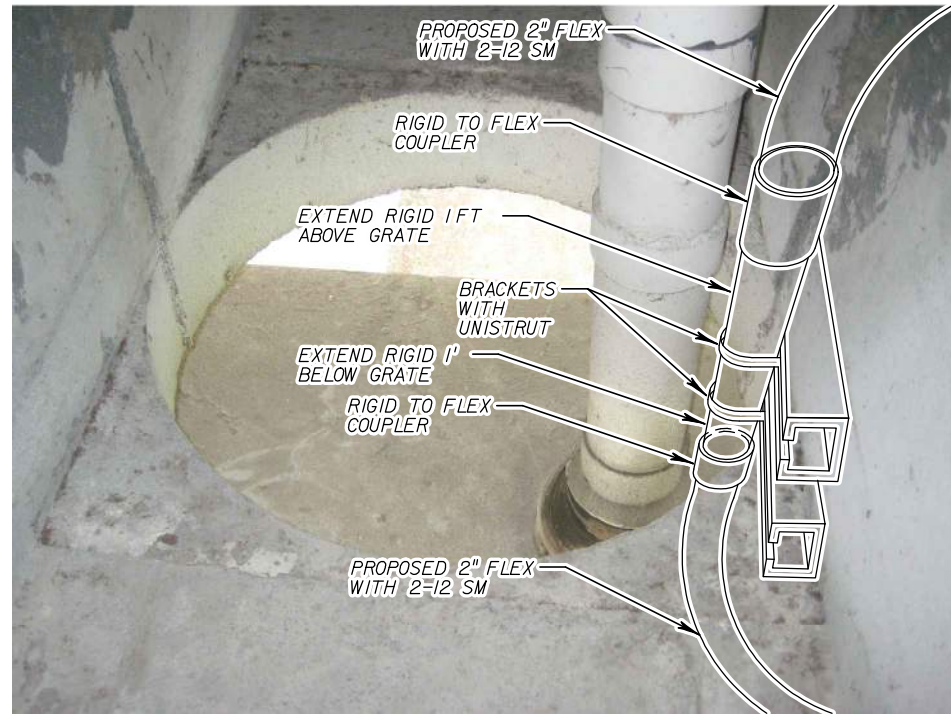
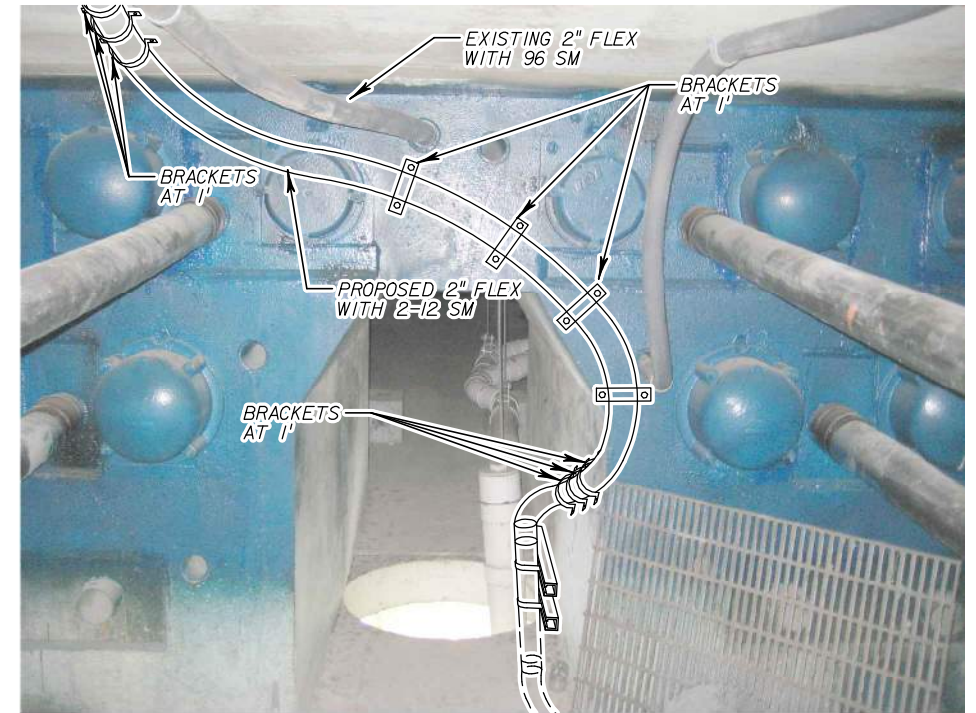
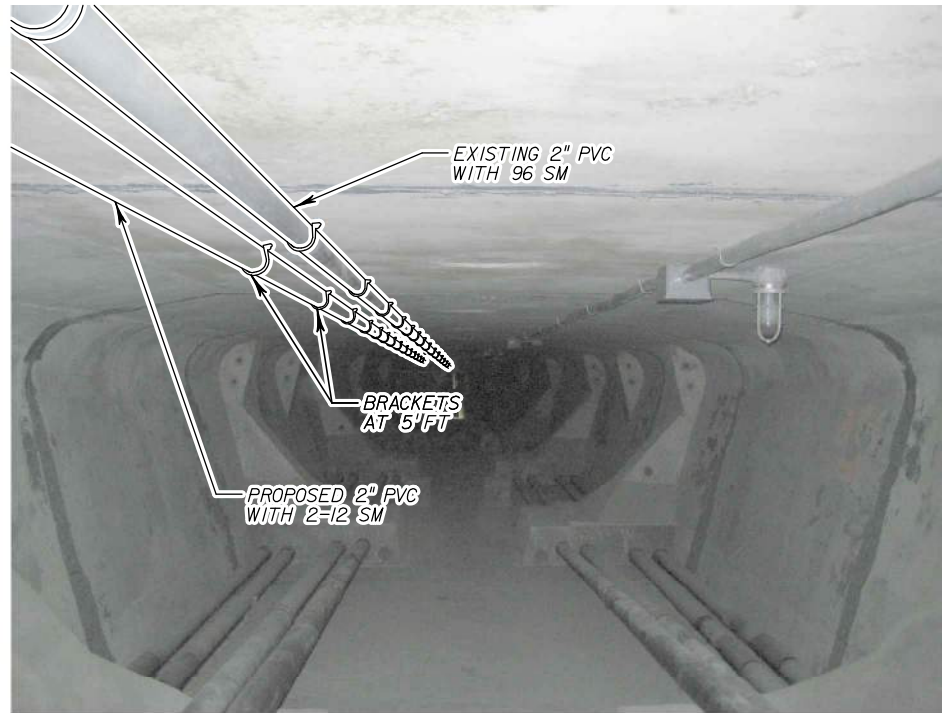
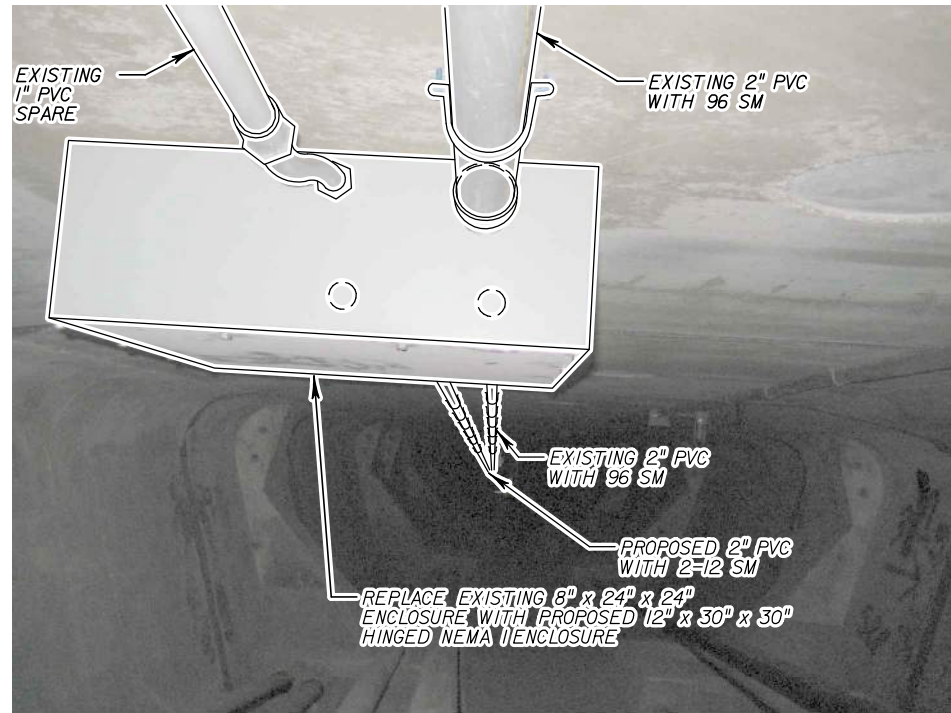
REVISIONS			
DATE	DESCRIPTION	DATE	DESCRIPTION

**HNTB**  
 10210 Highland Manor Drive - Suite 140 - Tampa, FL 33610  
 (813) 246-6527 - Cert. of Auth. No. EB6500  
 Engineer of Record: Malcolm Y. Tomatani, P.E. No: 65465

TAMPA - HILLSBOROUGH EXPRESSWAY AUTHORITY		
ROAD NO.	COUNTY	FINANCIAL PROJECT ID
SR 618	HILLSBOROUGH	

**CONDUIT MOUNTING DETAILS**  
**50TH STREET**

SHEET NO.
IT-16



REVISIONS				<b>HNTB</b> 10210 Highland Manor Drive - Suite 140 - Tampa, FL 33610 (813) 246-5527 - Cert. of Auth. No. EB6500 Engineer of Record: Malcolm Y. Tomatani, P.E. No: 65465	<b>TAMPA - HILLSBOROUGH EXPRESSWAY AUTHORITY</b>			<b>CONDUIT MOUNTING DETAILS</b> <b>EAST MAINLINE</b>	SHEET NO.
DATE	DESCRIPTION	DATE	DESCRIPTION		ROAD NO.	COUNTY	FINANCIAL PROJECT ID		IT-17
					SR 618	HILLSBOROUGH			

TOTAL LOAD FOR GANTRIES AT WILLOW AVENUE WESTBOUND ONRAMP, WILLOW AVENUE EASTBOUND OFFRAMP, PLANT STREET WESTBOUND ONRAMP, PLANT STREET EASTBOUND OFFRAMP, 22ND STREET WESTBOUND ONRAMP, 22ND STREET EASTBOUND OFFRAMP, 50TH STREET WESTBOUND ONRAMP

1 LANE AND 2 SHOULDERS	QUANTITY	POWER (WATTS)	TOTAL (WATTS)
<b>CABINET EQUIPMENT</b>			
VES IMAGE SERVER (1 PER TOLL LOCATION) + MAINT. COMP.	1	300	300
LANE CONTROLLER (2 PER TOLL LOCATION)	2	325	650
MONITOR MOUSE AND KEYBOARD	1	75	75
KVM SWITCH	1	15	15
TS 8	1	8	8
SWITCH	2	85	170
SWITCH TRANSCEIVER, 1000BASE-LX, LC CONNECTOR	2	12	24
ENVIRONMENTAL MONITORING PROBE	1	25	25
RACK MOUNT UPS 5KVA	1	1000	1000
UPS SNMP WEB CARD	1	5	5
<b>LANE EQUIPMENT</b>			
24V POWER SUPPLY	3	40	120
PEEK IDRIS SYSTEM	1	100	100
REAR CAMERA	2	39	78
REAR CAMERA FLASH	2	150	300
FRONT CAMERA	1	39	39
FRONT CAMERA LIGHT	1	17	17
POWER SUPPLY	1	10	10
LIGHT SENSOR	1	10	10
GPS TIME SYNC UNIT (2 FOR WHOLE ROADWAY)	1	115	115
MODEMS (1 FOR 4 CAMERAS)	1	12	12
<b>UTILITY AND EXPANSION</b>			
	1	2000	2000
<b>TOTAL</b>			5073
<b>TOTAL LOAD (X 1.25)</b>			6341

TOTAL LOAD FOR THE GANTRY AT EAST MAINLINE

3 LANES AND 2 SHOULDERS	QUANTITY	POWER (WATTS)	TOTAL (WATTS)
<b>CABINET EQUIPMENT</b>			
VES IMAGE SERVER (1 PER TOLL LOCATION) + MAINT. COMP.	1	300	300
LANE CONTROLLER (2 PER TOLL LOCATION)	2	325	650
MONITOR MOUSE AND KEYBOARD	1	75	75
KVM SWITCH	1	15	15
TS 8	1	8	8
SWITCH	2	85	170
SWITCH TRANSCEIVER, 1000BASE-LX, LC CONNECTOR	2	12	24
ENVIRONMENTAL MONITORING PROBE	1	25	25
RACK MOUNT UPS 5KVA	1	1000	1000
UPS SNMP WEB CARD	1	5	5
<b>LANE EQUIPMENT</b>			
24V POWER SUPPLY	8	40	320
PEEK IDRIS SYSTEM	1	100	100
REAR CAMERA	4	39	156
REAR CAMERA FLASH	4	150	600
FRONT CAMERA	3	39	117
FRONT CAMERA LIGHT	3	17	51
POWER SUPPLY	2	10	20
LIGHT SENSOR	1	10	10
GPS TIME SYNC UNIT (2 FOR WHOLE ROADWAY)	1	115	115
MODEMS (1 FOR 4 CAMERAS)	2	12	24
<b>UTILITY AND EXPANSION</b>			
	1	2000	2000
<b>TOTAL</b>			5785
<b>TOTAL LOAD (X 1.25)</b>			7231

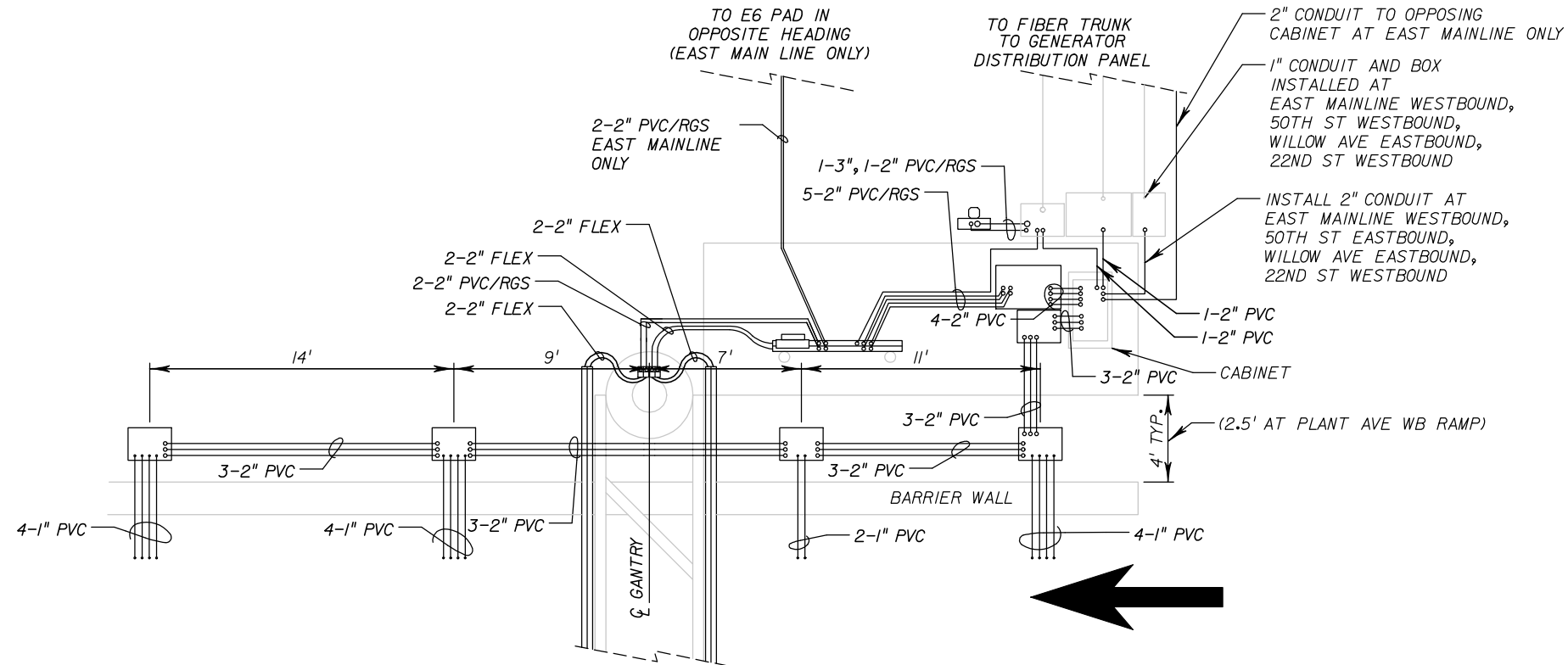
TOTAL LOAD FOR GANTRIES AT WEST MAINLINE WESTBOUND, WEST MAINLINE EASTBOUND, 50TH STREET EASTBOUND OFFRAMP, EAST MAINLINE EASTBOUND

2 LANES AND 2 SHOULDERS	QUANTITY	POWER (WATTS)	TOTAL (WATTS)
<b>CABINET EQUIPMENT</b>			
VES IMAGE SERVER (1 PER TOLL LOCATION) + MAINT. COMP.	1	300	300
LANE CONTROLLER (2 PER TOLL LOCATION)	2	325	650
MONITOR MOUSE AND KEYBOARD	1	75	75
KVM SWITCH	1	15	15
TS 8	1	8	8
SWITCH	2	85	170
SWITCH TRANSCEIVER, 1000BASE-LX, LC CONNECTOR	2	12	24
ENVIRONMENTAL MONITORING PROBE	1	25	25
RACK MOUNT UPS 5KVA	1	1000	1000
UPS SNMP WEB CARD	1	5	5
<b>LANE EQUIPMENT</b>			
24V POWER SUPPLY	6	40	240
PEEK IDRIS SYSTEM	1	100	100
REAR CAMERA	3	39	117
REAR CAMERA FLASH	3	150	450
FRONT CAMERA	2	39	78
FRONT CAMERA LIGHT	2	17	34
POWER SUPPLY	1	10	10
LIGHT SENSOR	1	10	10
GPS TIME SYNC UNIT (2 FOR WHOLE ROADWAY)	1	115	115
MODEMS (1 FOR 4 CAMERAS)	1	12	24
<b>UTILITY AND EXPANSION</b>			
	1	2000	2000
<b>TOTAL</b>			5450
<b>TOTAL LOAD (X 1.25)</b>			6812

REVISIONS				<b>HNTB</b> 10210 Highland Manor Drive - Suite 140 - Tampa, FL 33610 (813) 246-5527 - Cert. of Auth. No. EB6500 Engineer of Record: Malcolm Y. Tomatani, P.E. No: 65465	TAMPA - HILLSBOROUGH EXPRESSWAY AUTHORITY			<b>GANTRY</b>  <b>ELECTRICAL REQUIREMENTS</b>	SHEET NO.
DATE	DESCRIPTION	DATE	DESCRIPTION		ROAD NO.	COUNTY	FINANCIAL PROJECT ID		IT-18
				SR 618	HILLSBOROUGH				

**NOTES:**

1. WESTBOUND SHOWN, MIRROR FOR EASTBOUND.
2. TRANSCORE SHALL IDENTIFY PULL BOX AND E6 SUPPORTS IN THE FIELD BEFORE SLABS ARE CONSTRUCTED. SEE VENDOR DETAILS SHEET IT-2I.
3. SEE SHEET IT-2I FOR LOOP CONDUIT DETAIL AND E6 PAD DETAIL.
4. INSTALL GROUND ARRAY AT THE CABINET LOCATION AS WELL AS THE E6 LOCATIONS. SEE GROUNDING SPECIFICATION FOR REQUIREMENTS.



7' X 20' PAD  
 WILLOW AVE EB AND WB RAMPS  
 PLANT AVE WB RAMP  
 22ND ST EB AND WB RAMPS  
 50TH ST EB AND WB RAMPS  
 EAST MAINLINE EB AND WB

NOT TO SCALE

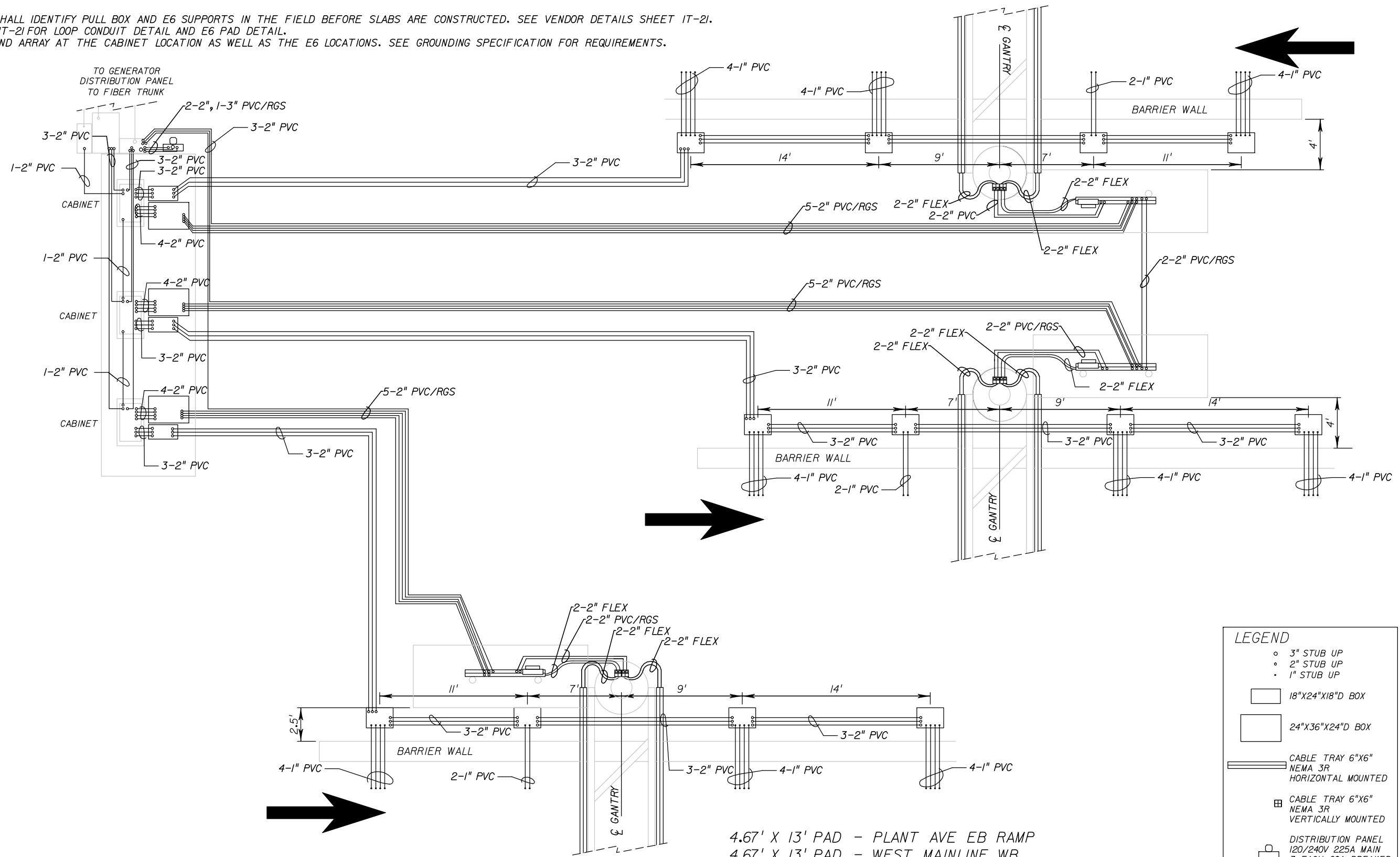
LEGEND	
○	3" STUB UP
◦	2" STUB UP
•	1" STUB UP
□	18"X24"X18"D BOX
□	24"X36"X24"D BOX
▬	CABLE TRAY 6"X6" NEMA 3R HORIZONTAL MOUNTED
⊞	CABLE TRAY 6"X6" NEMA 3R VERTICALLY MOUNTED
⊞	DISTRIBUTION PANEL 120/240V 100A MAIN 1 EACH 60A BREAKER 1 EACH 20A BREAKER
⊞	POWER OUTLET PANEL 120/240V 100A WITH GFCI OUTLET

REVISIONS				 10210 Highland Manor Drive - Suite 140 - Tampa, FL 33610 (813) 246-5527 - Cert. of Auth. No. EB6500 Engineer of Record: Malcolm Y. Tomatani, P.E. No: 65465	TAMPA - HILLSBOROUGH EXPRESSWAY AUTHORITY			SHEET NO.  <b>EQUIPMENT PAD DETAIL</b>
DATE	DESCRIPTION	DATE	DESCRIPTION		ROAD NO.	COUNTY	FINANCIAL PROJECT ID	
				SR 618	HILLSBOROUGH		IT-19	



**NOTES:**

1. TRANSORE SHALL IDENTIFY PULL BOX AND E6 SUPPORTS IN THE FIELD BEFORE SLABS ARE CONSTRUCTED. SEE VENDOR DETAILS SHEET IT-21.
2. SEE SHEET IT-21 FOR LOOP CONDUIT DETAIL AND E6 PAD DETAIL.
3. INSTALL GROUND ARRAY AT THE CABINET LOCATION AS WELL AS THE E6 LOCATIONS. SEE GROUNDING SPECIFICATION FOR REQUIREMENTS.



LEGEND	
○	3" STUB UP
◦	2" STUB UP
•	1" STUB UP
□	18"X24"X18"D BOX
□	24"X36"X24"D BOX
▬	CABLE TRAY 6"X6" NEMA 3R HORIZONTAL MOUNTED
⊞	CABLE TRAY 6"X6" NEMA 3R VERTICALLY MOUNTED
⊞	DISTRIBUTION PANEL 120/240V 225A MAIN 3 EACH 60A BREAKER 3 EACH 20A BREAKER
⊞	POWER OUTLET PANEL 120/240V 100A WITH GFCI OUTLET

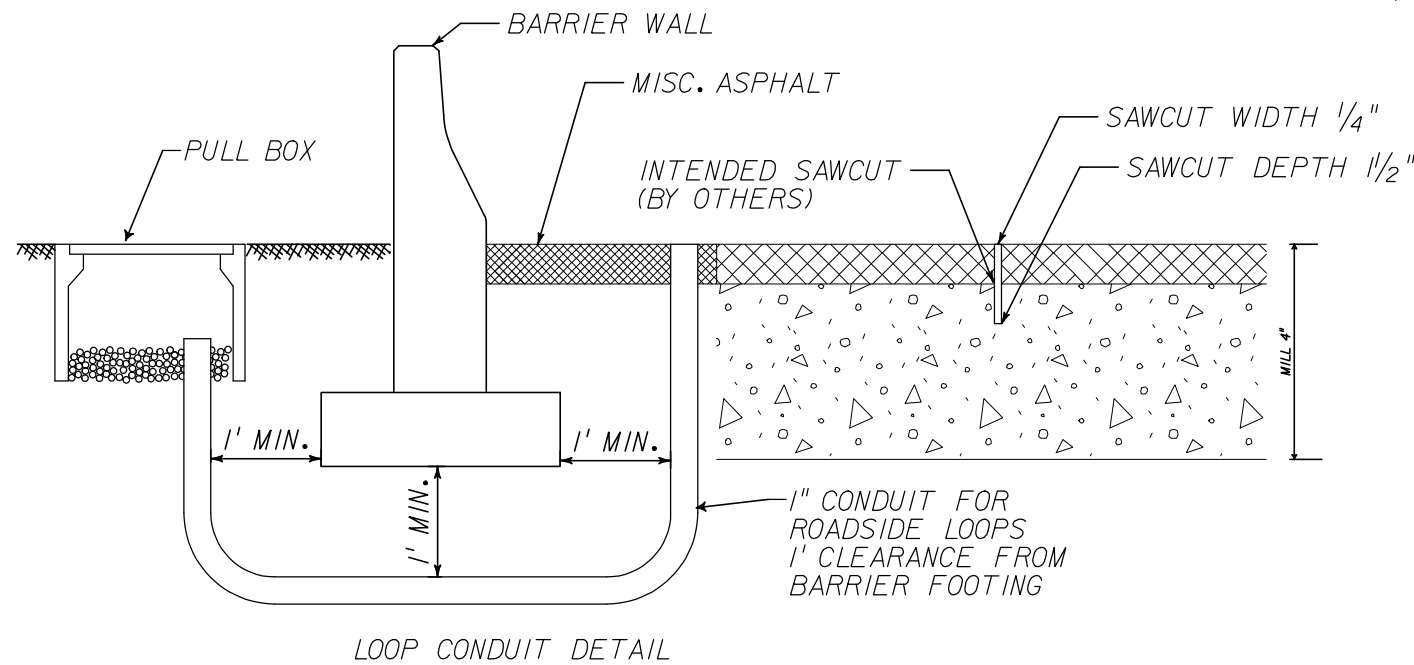
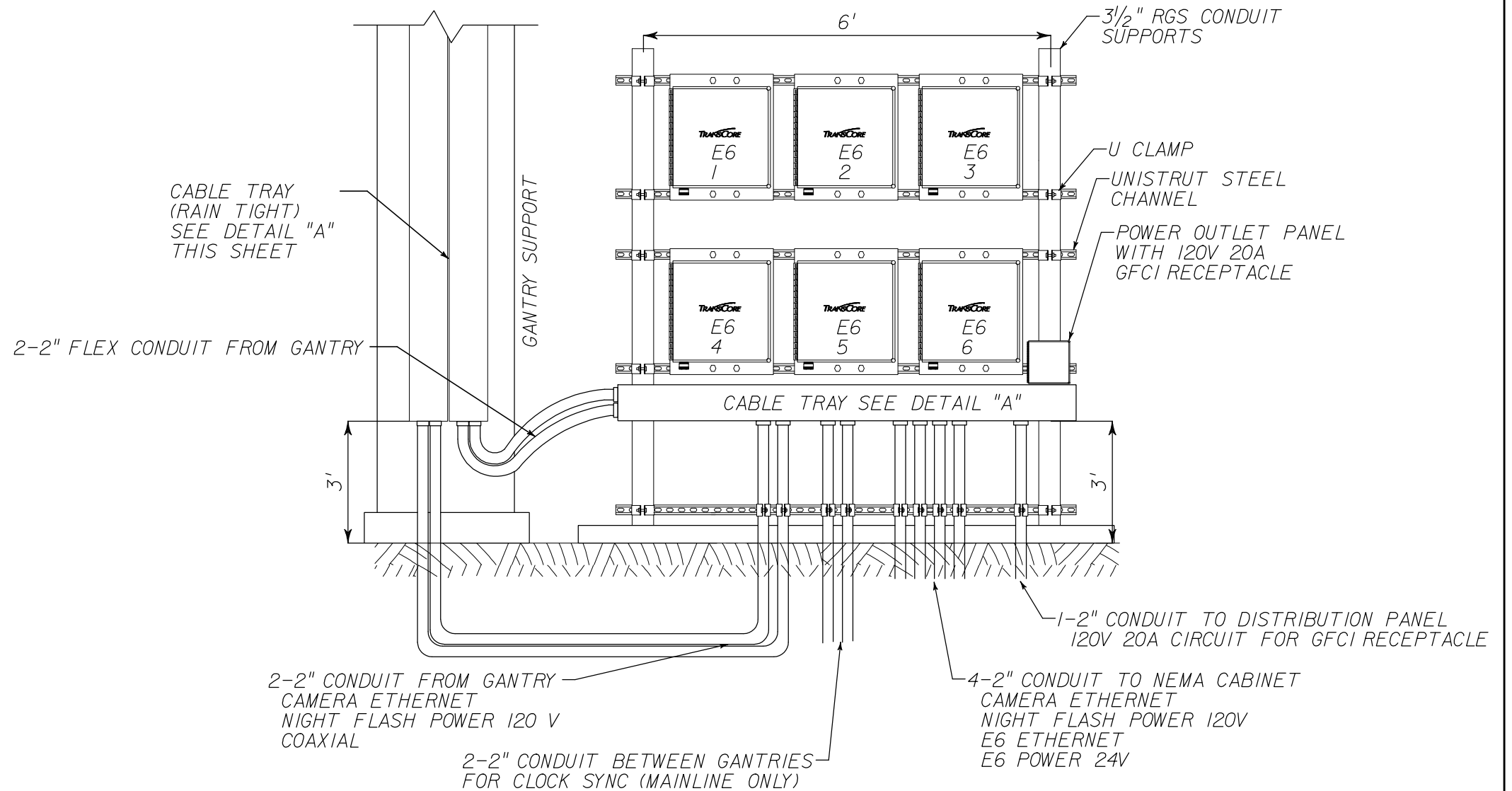
- 4.67' X 13' PAD - PLANT AVE EB RAMP
- 4.67' X 13' PAD - WEST MAINLINE WB
- 4.67' X 13' PAD - WEST MAINLINE EB
- 7' X 24' PAD - WEST MAINLINE / PLANT AVE VES CABINET

NOT TO SCALE

REVISIONS				 10210 Highland Manor Drive - Suite 140 - Tampa, FL 33610 (813) 246-5527 - Cert. of Auth. No. EB6500 Engineer of Record: Malcolm Y. Tomatani, P.E. No: 65465	TAMPA - HILLSBOROUGH EXPRESSWAY AUTHORITY		SHEET NO.  EQUIPMENT PAD DETAIL  IT-20
DATE	DESCRIPTION	DATE	DESCRIPTION		ROAD NO.	FINANCIAL PROJECT ID	
				SR 618	HILLSBOROUGH		

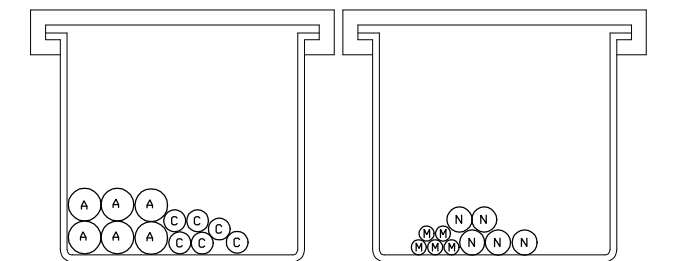
**NOTES:**

1. SEE ROADWAY PLANS FOR SLAB AND E6 SUPPORT DETAILS AND QUANTITIES.
2. ALL EQUIPMENT MOUNTED ON E6 SUPPORTS SHALL BE CONSTRUCTED BY OTHERS. (TRANSCORE)
3. CONTRACTOR SHALL INSTALL CONDUIT STUB-UPS THROUGH PAD TO A HEIGHT OF 3' AFTER TRANSCORE FIELD VERIFIES LOCATIONS.
4. SEE CABLE TRAY DETAILS ON SHEET IT-24 FOR MORE INFORMATION.



**LEGEND:**

- A: LMR 600 COAX CABLE
- C: CAMERA ETHERNET CABLE
- M: CAMERA POWER CABLE 24V
- N: NIGHT FLASH 120V POWER CABLE



6" X 6" CABLE TRAY FOR COMMUNICATION      6" X 6" CABLE TRAY FOR POWER

DETAIL "A"  
NTS

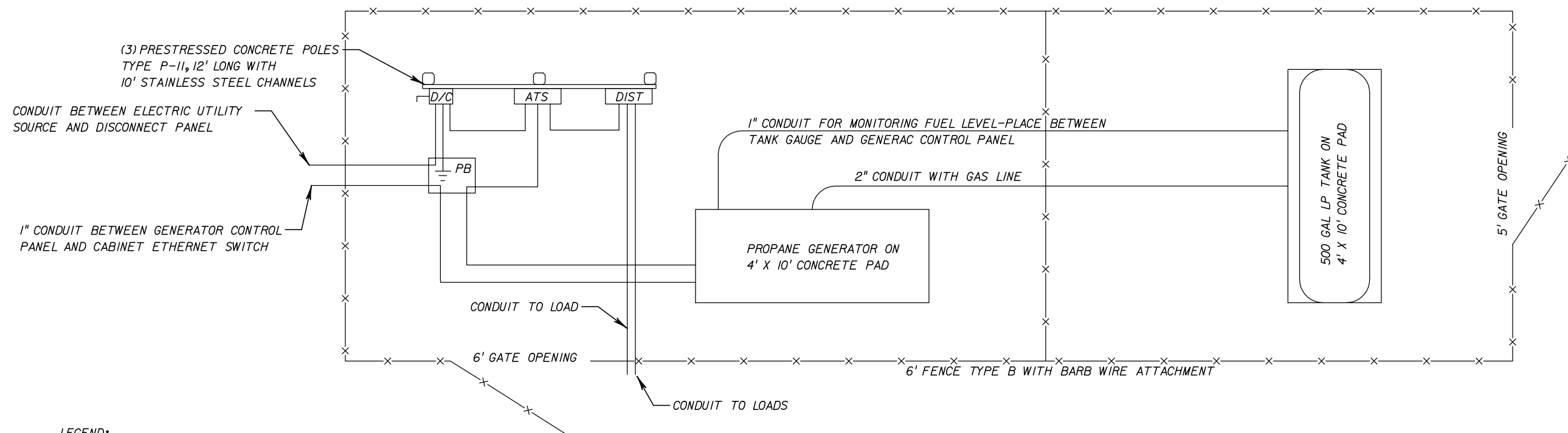
REVISIONS			
DATE	DESCRIPTION	DATE	DESCRIPTION

**HNTB**  
 10210 Highland Manor Drive - Suite 140 - Tampa, FL 33610  
 (813) 246-5527 - Cert. of Auth. No. EB6500  
 Engineer of Record: Malcolm Y. Tomatani, P.E. No: 65465

TAMPA - HILLSBOROUGH EXPRESSWAY AUTHORITY		
ROAD NO.	COUNTY	FINANCIAL PROJECT ID
SR 618	HILLSBOROUGH	

**VENDOR DETAILS**

SHEET NO.
IT-21



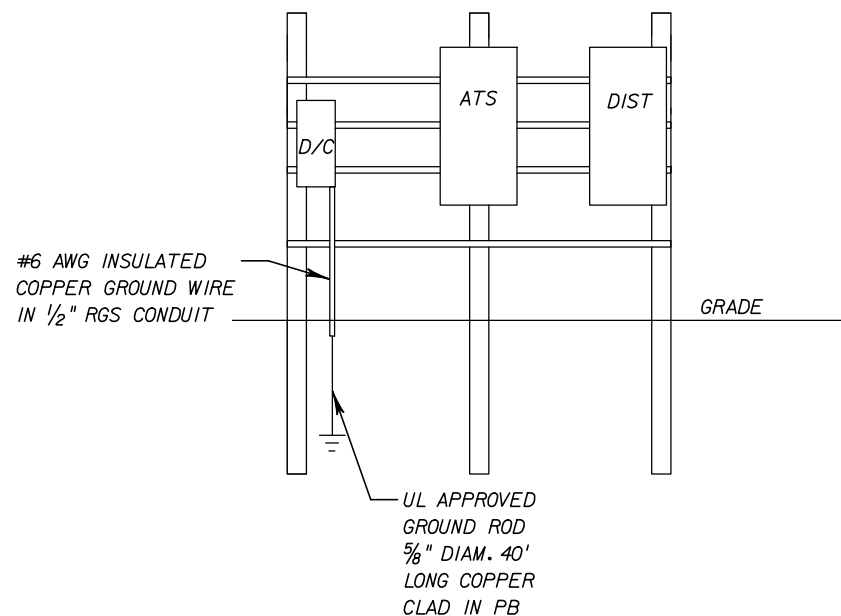
**LEGEND:**

- D/C: DISCONNECT
- ATS: AUTOMATIC TRANSFER SWITCH
- DIST: DISTRIBUTION PANEL
- PB: PULLBOX

**GENERATOR LAYOUT NOTES:**

1. ALL ELECTRICAL CONNECTIONS SHALL BE IN ACCORDANCE WITH NEC, NESC, AND LOCAL CODES.
2. THE MAIN DISCONNECT SHALL BE NEMA 3R, POLE MOUNTED.
3. ALL SERVICE EQUIPMENT SHALL BE UL APPROVED.
4. REFER TO FDOT INDEX NO. 802, 17504, AND 17725.
5. MAINTAIN A MINIMUM OF 15' SEPARATION BETWEEN LP TANK AND IGNITION SOURCE.
6. AT THE EAST MAINLINE LOCATION, A STEP DOWN TRANSFORMER IS REQUIRED AT THE GANTRY SITE.

ELECTRIC SERVICE PANELS FRONT ELEVATION VIEW  
NOT ALL CONDUITS SHOWN FOR CLARITY

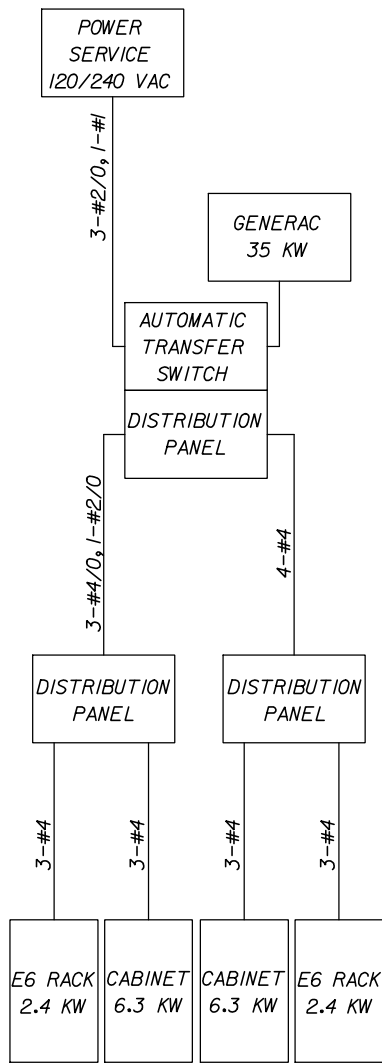


LOCATION	CABINET LOAD*	E6 RACK POWER OUTLET PANEL LOAD	TOTAL LOAD	GENERATOR RATING
WILLOW AVE WB	6.3 KW	2.4 KW	8.7 KW	35 KW
WILLOW AVE EB	6.3 KW	2.4 KW	8.7 KW	
PLANT AVE WB	6.3 KW	2.4 KW	8.7 KW	
PLANT AVE EB	6.3 KW	2.4 KW	8.7 KW	45 KW
WEST ML WB	6.8 KW	2.4 KW	9.2 KW	
WEST ML EB	6.8 KW	2.4 KW	9.2 KW	
22ND ST WB	6.3 KW	2.4 KW	8.7 KW	35 KW
22ND ST EB	6.3 KW	2.4 KW	8.7 KW	
50TH ST WB	6.3 KW	2.4 KW	8.7 KW	
50TH ST EB	6.8 KW	2.4 KW	9.2 KW	35 KW
EAST ML WB	7.2 KW	2.4 KW	9.6 KW	
EAST ML EB	6.8 KW	2.4 KW	9.2 KW	

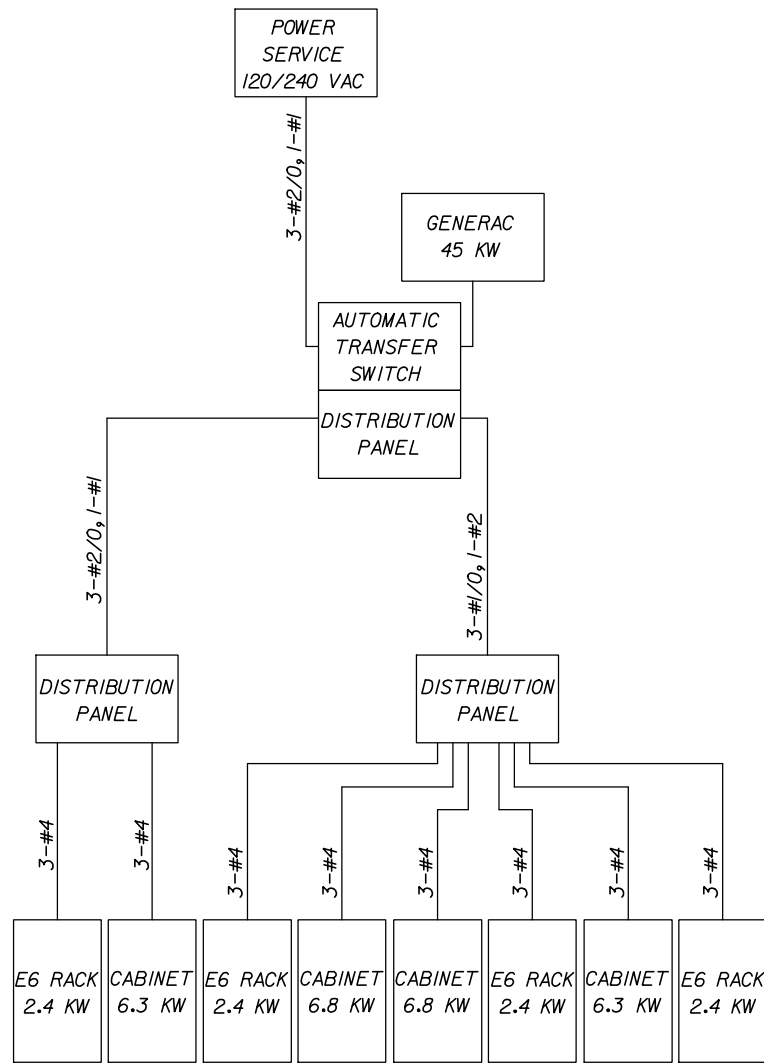
\*SEE GANTRY ELECTRICAL REQUIREMENT SHEET IT-18 FOR CABINET LOAD BREAKDOWN

REVISIONS				<p>10210 Highland Manor Drive - Suite 140 - Tampa, FL 33610 (813) 246-5527 - Cert. of Auth. No. EB6500 Engineer of Record: Malcolm Y. Tomatani, P.E. No: 65465</p>	TAMPA - HILLSBOROUGH EXPRESSWAY AUTHORITY			<p><b>GENERATOR PAD DETAIL</b></p>	SHEET NO.
DATE	DESCRIPTION	DATE	DESCRIPTION		ROAD NO.	COUNTY	FINANCIAL PROJECT ID		
					SR 618	HILLSBOROUGH			IT-22

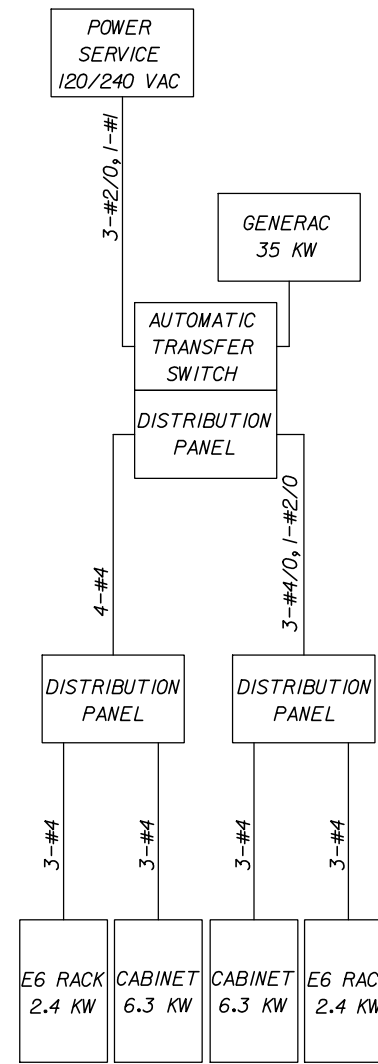
WILLOW AVENUE



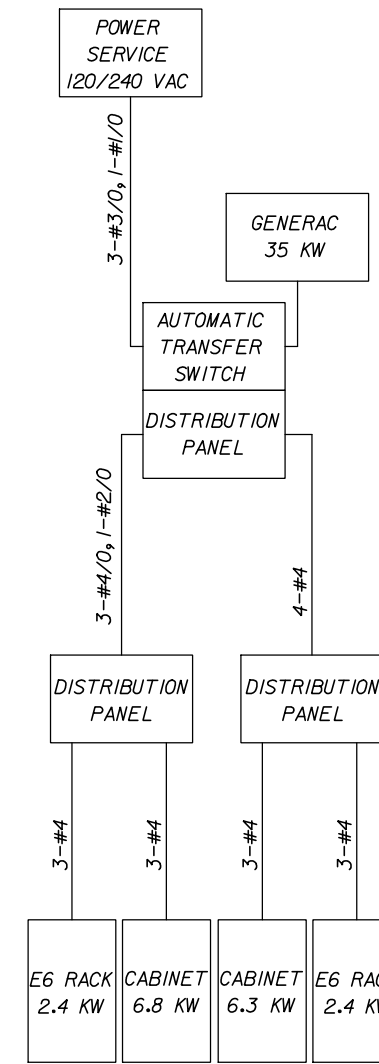
PLANT AVENUE/WEST MAINLINE



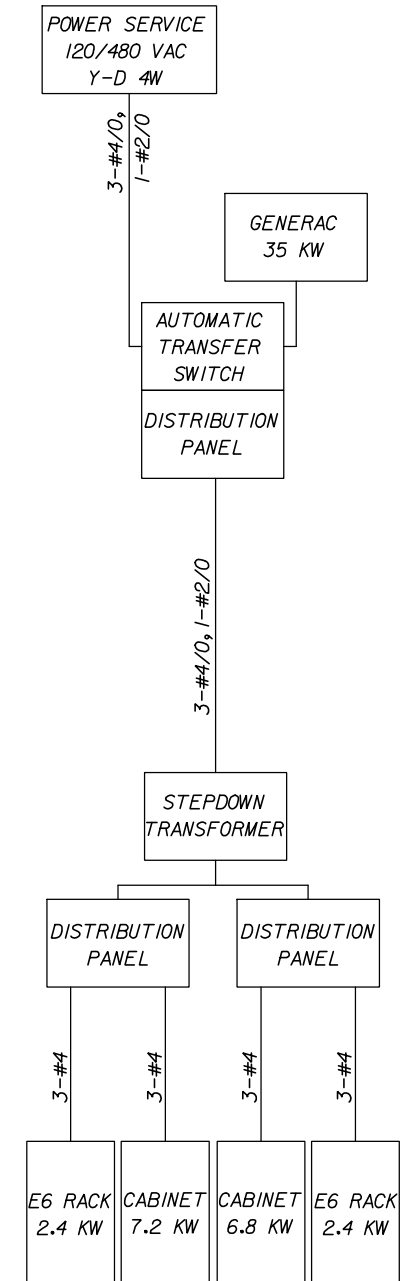
22ND STREET



50TH STREET



EAST MAINLINE



REVISIONS

DATE	DESCRIPTION	DATE	DESCRIPTION



10210 Highland Manor Drive - Suite 140 - Tampa, FL 33610  
 (813) 246-5527 - Cert. of Auth. No. EB6500  
 Engineer of Record: Malcolm Y. Tomatani, P.E. No: 65465

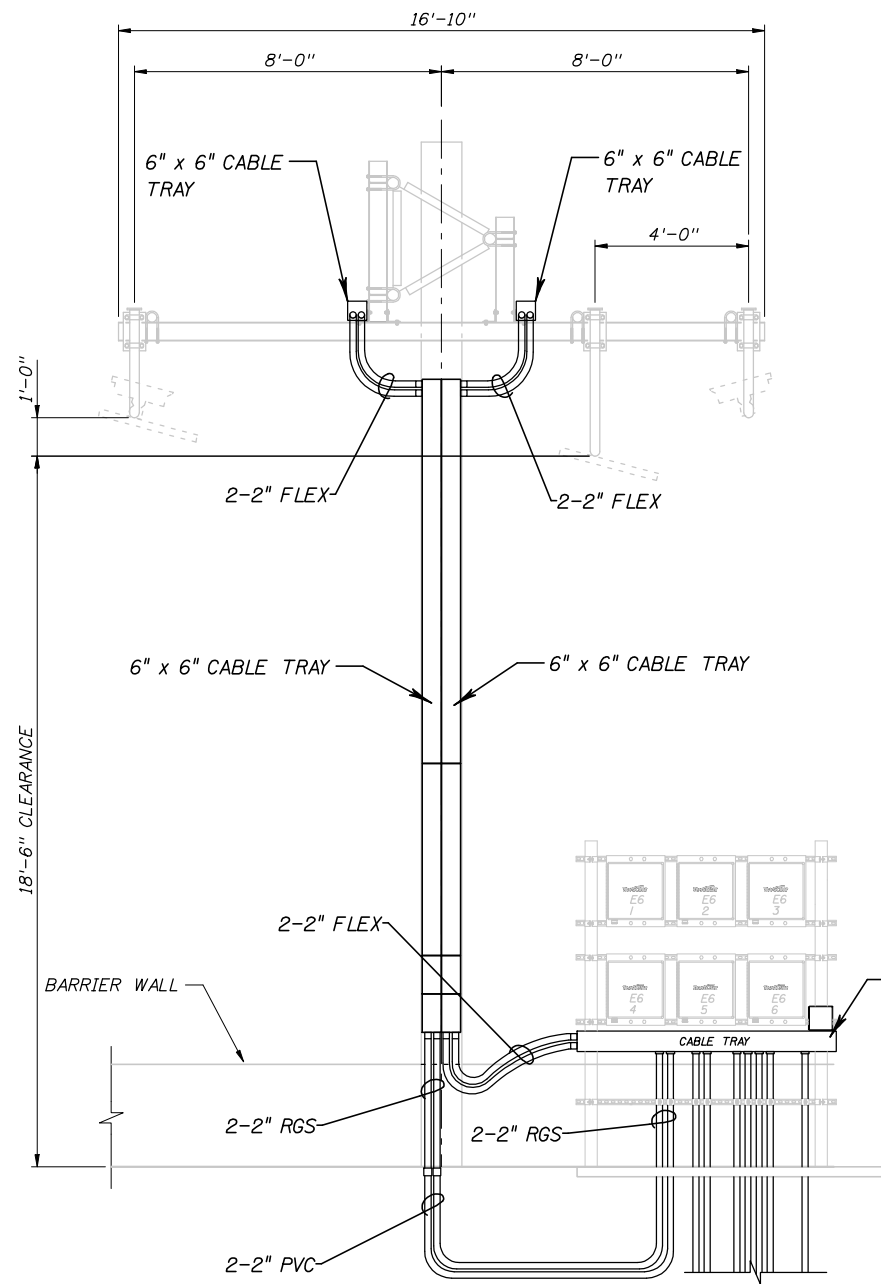
TAMPA - HILLSBOROUGH  
 EXPRESSWAY AUTHORITY

ROAD NO.	COUNTY	FINANCIAL PROJECT ID
SR 618	HILLSBOROUGH	

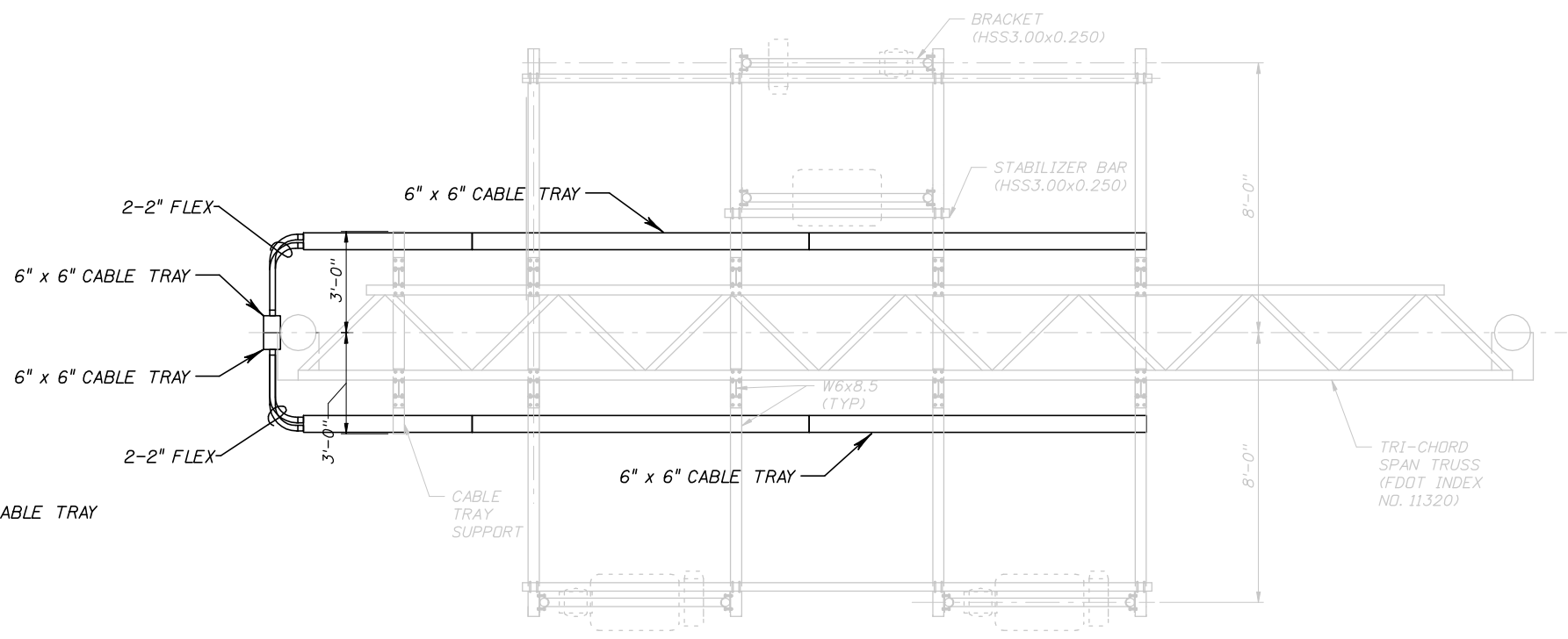
POWER LINE DIAGRAMS

SHEET NO.

1T-23



PROFILE  
(SIDE VIEW)



PLAN

REVISIONS			
DATE	DESCRIPTION	DATE	DESCRIPTION

**HNTB**  
 10210 Highland Manor Drive - Suite 140 - Tampa, FL 33610  
 (813) 246-5527 - Cert. of Auth. No. EB6500  
 Engineer of Record: Malcolm Y. Tomatani, P.E. No: 65465

TAMPA - HILLSBOROUGH EXPRESSWAY AUTHORITY		
ROAD NO.	COUNTY	FINANCIAL PROJECT ID
SR 618	HILLSBOROUGH	

**CABLE TRAY DETAILS**

SHEET NO.
IT-24