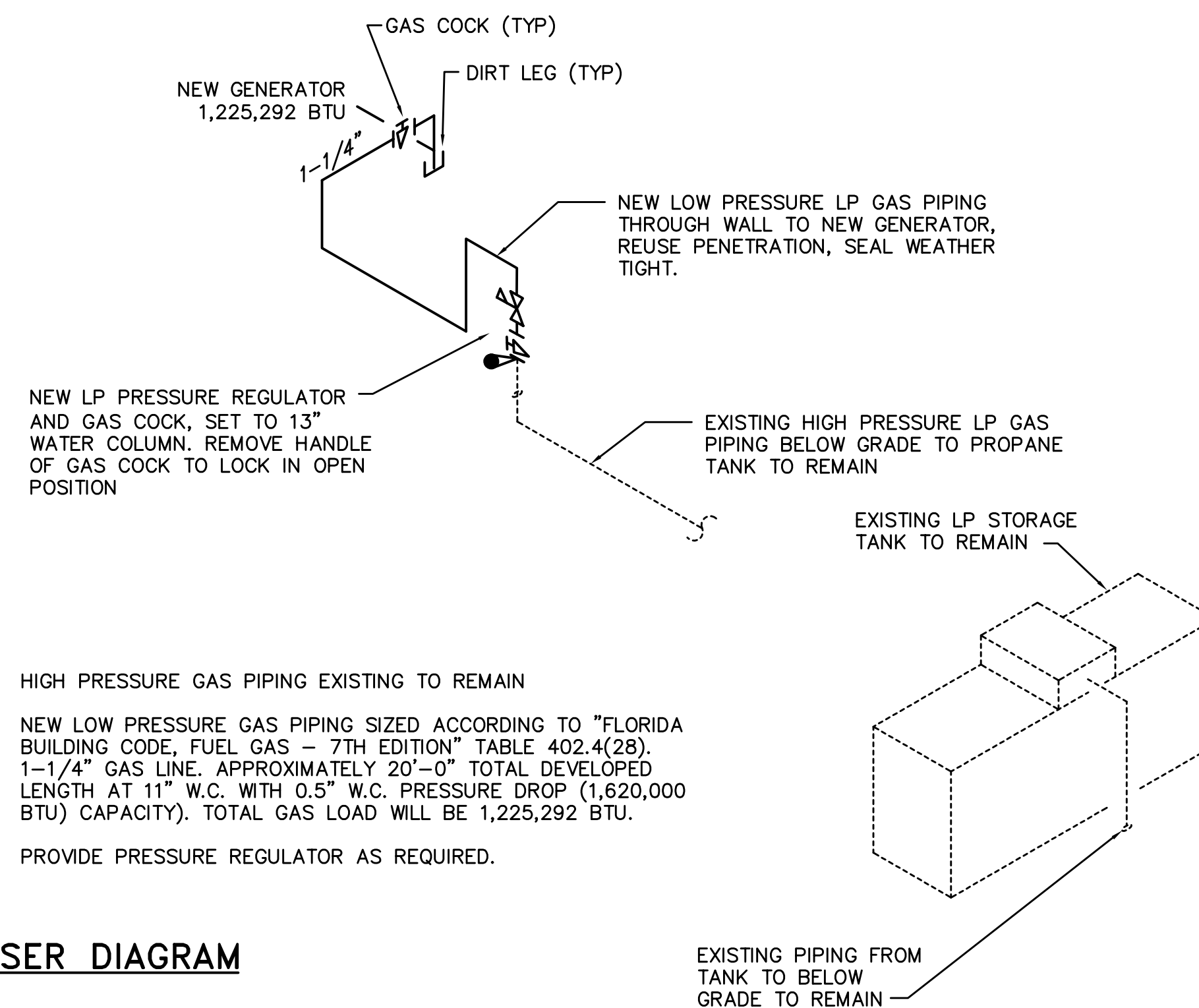


**WEST TOLL GENERATOR PLAN – MECHANICAL**  
NTS 1016.00

DESIGN DRAWINGS ARE SCHEMATIC. THIS CONTRACTOR SHALL VISIT THE SITE PRIOR TO BIDDING OR AWARD OF CONTRACT TO INSPECT EXISTING FIELD CONDITIONS. THIS CONTRACT SHALL INCLUDE ALL LABOR AND MATERIALS NECESSARY FOR FIELD MODIFICATIONS DUE TO EXISTING CONDITIONS.

THE CONTRACTOR SHALL CONTACT THE ENGINEER OR OWNER PRIOR TO BIDDING FOR INTERPRETATIONS AND CLARIFICATIONS OF THE DESIGN AND INCLUDE IN HIS BID ALL COSTS TO MEET THE DESIGN INTENT. CLARIFICATIONS MADE BY THE ENGINEER, OR OWNER AFTER BIDDING WILL BE FINAL AND SHALL BE IMPLEMENTED AT THE CONTRACTOR'S EXPENSE.



**GAS RISER DIAGRAM**  
NTS

**FUEL GAS GENERAL NOTES**

- ALL PLUMBING WORK SHALL MEET ALL THE REQUIREMENTS OF THE "2020 FLORIDA FUEL GAS CODE, PLUMBING – 7TH EDITION"
- REVIEW PLANS OF ALL TRADES PRIOR TO BIDDING AND INSTALLATION TO INCLUDE ALL PLUMBING FOR COMPLETE SYSTEMS SHOWN ON THE PLANS AND AS REQUIRED.
- COORDINATE WITH OTHER TRADES TO PREVENT INTERFERENCE WITH OTHER TRADE WORK.
- ALL CHANGES SHALL BE APPROVED BY THE ENGINEER.
- COORDINATE WITH THEA AND ENGINEERING DRAWINGS BEFORE ROUGHING-IN.
- VERIFY LOCATION OF EXISTING GAS SERVICE AND THE LOCATION OF NEARBY UTILITIES PRIOR TO INSTALLATION.
- IT IS IN THE INTENT OF THESE DRAWINGS TO COVER ALL WORK AND MATERIAL. ANY EQUIPMENT, PLUMBING FIXTURE, TRIM HARDWARE AND/OR DEVICES USUALLY UTILIZED IN THE CLASS OF WORK, THOUGH NOT SPECIFICALLY MENTIONED OR SHOWN ON THESE DRAWINGS, BUT WHICH MAY BE NECESSARY FOR THE SATISFACTORY COMPLETION OF THE WORK (AS DETERMINED BY THE ENGINEER) SHALL BE FURNISHED AND INSTALLED BY THE CONTRACTOR AS PART OF HIS TOTAL WORK.
- ALL WORK, BOTH MATERIAL AND INSTALLATION, SHALL BE GUARANTEED FOR A PERIOD OF ONE YEAR FROM DATE OF ACCEPTANCE BY THE OWNER.
- ABOVE GROUND GAS PIPING SHALL BE SCHEDULE 40 BLACK STEEL. EXPOSED PIPING SHALL BE PAINTED YELLOW WITH (2) COATS OF A CORROSION INHIBITING PAINT.
- CONNECTIONS OF PIPING WITH DISSIMILAR METALS SHALL HAVE THE PROPER DIALECTIC FITTINGS TO INHIBIT CORROSION.

**FUEL GAS LEGEND**

DESCRIPTION	ABBREV.	SYMBOL
NEW GAS PIPING	G	—
GAS COCK	GC	⊥
EXISTING GAS PIPING	G	---

**MECHANICAL GENERAL NOTES**

- IN GENERAL, PLANS AND DIAGRAMS ARE SCHEMATIC ONLY AND SHOULD NOT BE SCALED.
- INTENT OF THESE NOTES AND MECHANICAL NOTES ON DRAWINGS IS TO CLARIFY THE SCOPE OF WORK AND ALERT CONTRACTOR OF EXISTING CONDITIONS. CONTRACTOR TO VISIT SITE AND VERIFY ALL CLEARANCES BEFORE FABRICATION OF DUCTWORK AND PROVIDE ADDITIONAL OFFSET AND/OR CHANGES IN DUCT SIZES TO MEET FIELD CONDITIONS AND COORDINATE WITH ELECTRICAL, PLUMBING AND FIRE PROTECTION SUBCONTRACTOR BEFORE ANY CONSTRUCTION WORK.
- CONTRACTOR SHALL NOTIFY THE OWNER OR HIS AUTHORIZED REPRESENTATIVE OF ANY DAMAGE TO THE EXISTING INSTALLATION BEFORE PROCEEDING WITH THE WORK.
- DUCT DIMENSIONS SHOWN ON DRAWINGS ARE CLEAR INSIDE DIMENSIONS.
- THE GENERAL CONTRACTOR IS RESPONSIBLE FOR ALL TRADES INSTALLATION SCHEDULES. FIXED WORK SUCH AS DUCTWORK AND PLUMBING SHALL BE INSTALLED PRIOR TO ANY TRADE WORK THAT CAN BE EASILY RELOCATED OR OFFSET SUCH AS ELECTRICAL CONDUITS, SMALL WATER LINES ETC.
- CONTRACTOR SHALL PROVIDE ALL SUPPLEMENTARY STEEL REQUIRED TO SUSPEND MECHANICAL EQUIPMENT AND MATERIALS.
- EXHAUST DUCTWORK SHALL BE GALVANIZED SHEET METAL CONSTRUCTION, PER LATEST SMACNA STANDARDS. PROVIDE TURNING VANES.
- ALL MECHANICAL WORK SHALL MEET ALL THE REQUIREMENTS OF THE "FLORIDA BUILDING CODE, MECHANICAL – 7TH EDITION (2020)".

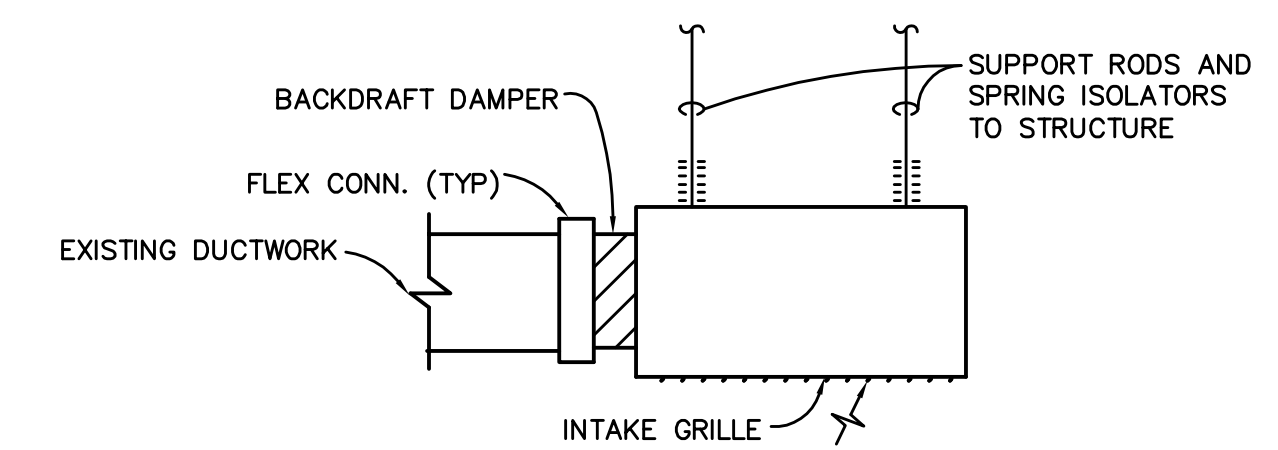
**MECHANICAL LEGEND**

SYMBOL	DESCRIPTION
—	NEW DUCTWORK, PIPING, OR EQUIPMENT
▣	RETURN OR EXHAUST DUCT SECTION
(E)	EXISTING
---	EXISTING DUCTWORK, PIPING, OR EQUIPMENT TO REMAIN

**FAN SCHEDULE**

TAG	—	EF-1	
SERVICE	—	EXHAUST GENERATOR	
AIR QUANTITY	CFM	500	
EXT. STATIC PRESS.	IN. H <sub>2</sub> O	0.4	
FAN TYPE	—	CEILING	
DRIVE	—	DIRECT	
SONES	—	4.0	
MOTOR	H.P./WATTS	185 WATTS	
FAN SPEED	RPM	1215	
POWER	V/∅	120/1	
CONTROL	—	WIRE VOLTAGE T-STAT	
LOCATION	—	GENERATOR	
MANUFACTURER	—	COOK	
MODEL	—	GC-720	
NOTES/ACCESSORIES	④	①	

① VIBRATION ISOLATORS, LOW LEAKAGE BACKDRAFT DAMPER, HANGING KIT, FAN SPEED CONTROLLER, DISCONNECT BY ELECTRICAL. FACTORY GRILLE.



**INLINE EXHAUST FAN DETAIL**  
NO SCALE

Description:

Issue / Revision:

Date:

No. 1 2 3 4 5

Engineer:

Consultant:

Project Name:

Sheet Title:

Project No.:

Issue Date:

Drawn By:

Checked By:

Sheet No.:

Project No.: 2010D

Issue Date: 01.13.2022

Drawn By: ES

Checked By: SRH

Sheet No.:

Project Name:

Sheet Title:

Project No.:

Issue Date:

Drawn By:

Checked By:

Sheet No.:

Project Name:

Sheet Title:

Project No.:

Issue Date:

Drawn By:

Checked By:

Sheet No.:

Project Name:

Sheet Title:

Project No.:

Issue Date:

Drawn By:

Checked By:

Sheet No.:

ITS AND TOLL PLAZA GENERATOR REPLACEMENT DESIGN

FLOOR PLAN MECHANICAL / FUEL GAS

WEST TOLL PLAZA

MP1.0

SHANE R. HAMILTON, PE  
FLORIDA LICENSE #75420

TO THE BEST OF THE ENGINEER'S KNOWLEDGE, THE PLANS AND SPECIFICATIONS COMPLY WITH THE MINIMUM BUILDING CODES. THIS DOCUMENT IS VALID FOR 12 MONTHS FROM DATE OF ENGINEER SIGNATURE AND SEAL. SHALL ENGINEERING GROUP, INC. RESERVE ALL INTELLECTUAL AND PHYSICAL RIGHTS TO THIS DOCUMENT AND TO CONTROL AND PROMOTE ITS PUBLISHING, DISSEMINATION OR REPRODUCTION WITHOUT CONSENT.

Engineering Professionals, Inc.  
Mechanical Engineering  
912 W. Dr. Martin Luther King Jr. Blvd.  
Tampa, FL 33603 (813) 231-0668