



INVITATION TO BID (ITB)
Contract #: O-2823
Grounding REL Uplighting

ITB Issue Date & Cone of Silence Effective Date: 12/22/2023

ITB Response Due Date: 2/15/2024

RESPONSIBLE DEPARTMENT

Operations: PM-
Brian Pickard, Director of Operations

PROCUREMENT DEPARTMENT

Shannon Bush, Contracts and Procurement Manager
1104 East Twiggs Street, Suite 300
Tampa, Florida 33602
Telephone Number: (813) 272-6740
Email: Procurement@tampa-xway.com

THE RESPONSIBILITY OF SUBMITTING A BID PROPOSAL PACKAGE IN RESPONSE TO THIS SOLICITATION DOCUMENT TO THEA ON OR BEFORE THE STATED DEADLINE SHALL BE SOLELY AND STRICTLY OF THE BIDDER. THEA SHALL IN NO WAY BE RESPONSIBLE FOR DELAYS CAUSED BY THE UNITED STATES MAIL, OR ANY OTHER DELIVERY SERVICE, OR CAUSED BY ANY OTHER OCCURRENCE.

BIDDERS SHALL READ THE SOLICITATION DOCUMENTS IN ITS ENTIRETY PRIOR TO SUBMITTING A BID PROPOSAL PACKAGE.

BY SUBMITTING A BID PROPOSAL PACKAGE, THE BIDDER ACKNOWLEDGES THEY HAVE READ, UNDERSTAND, AND ACCEPT THE TERMS AND CONDITIONS TO BE MET AND THE CHARACTER AND QUALITY OF THE SCOPE OF WORK TO BE PROVIDED

Legal Entity Name (Bidder): _____
Address of Bidder: _____
FEIN: _____
Name of Authorized Officer: _____ Title: _____
E-mail: _____ Phone Number: _____

Attachments and/or References not attached hereto will be supplied upon request and shared via a OneDrive File Share. Please contact the Procurement Office at procurement@tampaxway.com to request your link.

Exhibits/Attachments/References-

- A. Scope of Services
- B. Public Entity Crime
- C. Drug-Free Workplace
- D. Bid Proposal Form
- E. Conflict of Interest Form
- F. Certification Regarding Scrutinized Companies Lists

Construction Drawings/Specification Attachments

- 1. TSP (Technical Special Provision) – T715 Highway Lighting System
- 2. Conformed Plans_THEA Aesthetic Lighting_Bid Alternate Plans_S&S
- 3. Conformed Plans_THEA Aesthetic Lighting_ITS Plans_S&S
- 4. Conformed Specs_THEA_Aesthetic Lighting_S&S
- 5. Reduced Conformed Plans_THEA Aesthetic Lighting_Base Bid Plans_Revised II 04 05 21

I. INTRODUCTION

The Tampa-Hillsborough County Expressway Authority (THEA) is soliciting sealed bids from qualified contractors to ground the lighting bracket arms at each of the 157 piers to mitigate transient voltage surges that are otherwise impacting the lighting system, for the Tampa Hillsborough-County Expressway Authority (THEA) Reversible Expressway System Network for THEA's Headquarters, located at 1104 E. Twiggs St, suite 300, Tampa, FL 33602.

The lighting brackets will be bonded to the aesthetic lighting ground system located in existing Junction Box D inside the bridge deck. The lighting brackets will also be bonded to a ground rod at the base of the pier.

In addition to the piers, the lighting brackets located on the straddle bents and abutments will be bonded to the grounding circuit. The grounding circuit will also be bonded to a ground rod at the base of the bent leg or abutment.

Load centers servicing each facility will be inspected, tested, and upgraded as needed to meet the minimum grounding resistance requirements.

II. INSTRUCTIONS TO BIDDERS

1. THEA must receive all submittals at the location, date, and time identified in **Section VI., Schedule of Events**. Any submittal received after the stated time and date shall not be considered. It shall be the sole responsibility of the firm to have its package delivered to THEA however, facsimile or telegraphic submittals will not be accepted. Delay in delivery shall not be the responsibility of THEA. Submittals received after the deadline shall not be considered and may be returned only at the firm's expense.
2. Each firm shall examine all documents and shall determine all matters relating to the interpretation of such documents.
3. The following exhibits are required by THEA to be completed by the bidder and submitted as part of the Bid Proposal Package:
 - B. Public Entity Crime
 - C. Drug-Free Workplace
 - D. Bid Proposal Form
 - E. Conflict of Interest Form
 - F. Certification Regarding Scrutinized Companies Lists
4. One (1) original sealed bid proposal package and the required forms above must be delivered to THEA's Procurement Department in one package, clearly marked on the outside, **"Invitation to Bid O-2823 for the Tampa-Hillsborough County Expressway Authority"** with date sent and delivered to:

Procurement Office
1104 East Twiggs Street, Suite 300
Tampa, FL 33602

5. THEA shall not be liable for any expenses incurred in the preparation of the bid proposal package.
6. THEA reserves the right to accept or reject any or all bid proposal packages, to waive irregularities and technicalities, and to request resubmission or to re-advertise for all or any part of the work. THEA

shall be the sole judge of the submittals and the resulting negotiated agreement that is in THEA's best interest, and THEA's decision shall be final.

7. The successful firm shall be required to execute an agreement, in form and content acceptable to THEA, indemnifying and holding harmless THEA, its officials, officers, employees, and agents from all claims.

8. **CONE OF SILENCE**

Firms, their agents, or associates shall refrain from contacting or soliciting any THEA staff or members of the Board of Directors directly or indirectly regarding this ITB during the selection process. Failure to comply with this provision may result in the disqualification of the firm. All requests for clarification or additional information should be made in writing via email to: Procurement@tampa-xway.com

AT THE DISCRETION OF THEA, ANY VIOLATION OF THE REQUIREMENTS SET FORTH IN THIS SECTION SHALL CONSTITUTE GROUNDS FOR IMMEDIATE REJECTION OF THE BID PROPOSAL PACKAGE AND THE BIDDER SHALL BE DEEMED NON-RESPONSIVE.

III. **QUALIFICATIONS:**

1. The bidder must include with its bid proposal package all completed required forms as indicated in Section II Instructions to bidders. Failure to submit all completed forms may cause for rejection at the sole option of THEA.
2. Bidder must have a Master Electrician's License with State of Florida, or, Prequalified by FDOT in ITS, Traffic Signal, or, Electrical Work.

IV. **DOING BUSINESS IN THE STATE OF FLORIDA**

All bidders shall be in good standing with and authorized to do business in the State of Florida. Furthermore, it is the responsibility of the bidder to confirm that all of its subcontractors are also in good standing and authorized to do business in the State of Florida as may be required pursuant to §607.1501, §605.0902, and §605.0905 Florida Statutes.

If a bidder is not required to register pursuant to Florida Statutes, the successful bidder shall be able to submit documentation demonstrating non-applicability of the statute.

THEA shall not execute an agreement if the successful bidder and subcontractors are not registered and in good standing to do business in the State of Florida as required by the referenced Florida Statutes.

V. **SELECTION PROCESS**

THEA intends to purchase the product/services from the responsible and responsive bidder. The selection process for this ITB will consist of the following.

Bid proposal packages will be evaluated on whether the bidder is responsible and responsive to this solicitation, with the objective to evaluate those bids and responses and to award a contract for the work to the firm with the **lowest total lump sum price**.

THEA will determine if the firm's bid is responsive and is a responsible bidder, in its sole and absolute discretion, considering all relevant facts and information. THEA reserves the right at its sole discretion to reject any and all bids if it is determined the total lump sum price is excessive, best offers are determined to be unreasonable or it is in THEA's best interest to do so.

FINAL SELECTION:

The bidder with the **lowest total lump sum price** will be presented to THEA's Board of Directors for consideration and approval with a recommendation that the bidder be selected per the Schedule of Events below.

VI. SCHEDULE OF EVENTS

DATE	DESCRIPTION	LOCATION
December 22, 2023, by 5:00 PM	Advertisement Published	THEA Website & Demandstar
January 17, 2024, by 9:00 AM	Deadline for Respondent's submission of questions to THEA	Email to Procurement@tampa-xway.com
January 31, 2024, by 5:00 PM	Deadline for THEA to respond to Respondent's questions	THEA Website & Demandstar
February 15, 2024, by 9:00 AM	Deadline for Submitting Bid Proposal Package	Email to Procurement@tampa-xway.com
February 15, 2024, @ 1:30 PM	Public Opening of Bid Proposal Packages	THEA Office 1101 E. Twiggs Street, Suite 300 Tampa, FL 33602
February 19, 2024, by 5:00 PM	Post Notice of Intended Ranking	THEA Website & Demandstar
February 26, 2024, @ 1:30 PM	Board Approval of Final Ranking & Award of Contract	THEA Office 1101 E. Twiggs Street Tampa, FL 33602
February 28, 2024, by 5:00 PM	Posting of Award of Contract	THEA Website & Demandstar

VII. TERMS AND CONDITIONS

THEA reserves the right to reject any bid proposal packages not conforming to this Invitation to Bid, and to waive any irregularity or informality with respect to any proposal. THEA further, reserves the right to request clarification of information submitted and to request additional information from one or more firms.

THEA requires that the bidder selected will not discriminate under the agreement against any person in accordance with federal, state, and local governments' regulations. THEA requires the bidder selected make an affirmative statement to the effect that their retention shall not result in conflict of interests with respect to THEA.

THEA requires that the bidder make an affirmative statement to the effect that they have not contacted, or attempted to contact, any member of the Board of Directors, or THEA staff, except as expressly permitted in the ITB.

EXHIBIT A SCOPE OF SERVICES

Background: The lighting manufacturer for the aesthetic lighting on THEA's Reversible Expressway Lanes (REL) has performed a field investigation of the lighting system and has recommended grounding the lighting bracket arms at each of the 157 piers to mitigate transient voltage surges that are otherwise impacting the lighting system. The lighting brackets will be bonded to the aesthetic lighting ground system located in existing Junction Box Δ inside the bridge deck. The lighting brackets will also be bonded to a ground rod at the base of the pier.

In addition to the piers, the lighting brackets located on the straddle bents and abutments will be bonded to the grounding circuit. The grounding circuit will also be bonded to a ground rod at the base of the bent leg or abutment.

Firms shall inspect and test the load centers servicing each facility and reports of the testing and inspections shall be provided to the engineer.

Scope: The Governing Standard Plans are the Florida Department of Transportation, FY2022-23 Standard Plans for Road and Bridge Construction and applicable Interim Revisions (IRs). Standard Plans for Road Construction and associated IRs are available at the following website: <http://www.fdot.gov/design/standardplans>.

The Governing Standard Specifications are the Florida Department of Transportation, July 2022 Standard Specifications for Road and Bridge Construction at the following website: <http://www.fdot.gov/programmanagement/Implemented/SpecBooks>

The scope of work consists of grounding the lighting brackets at 157 piers. The pier numbers are listed in Table 1.

Table 1. REL Pier Numbers

No.	Pier Number	No.	Pier Number	No.	Pier Number
1	Pier 172	16	Pier 153	31	Pier 138
2	Pier 171	17	Pier 152	32	Pier 138A
3	Pier 170	18	Pier 151	33	Pier 137
4	Pier 169	19	Pier 150	34	Pier 136
5	Pier 168	20	Pier 149	35	Pier 135
6	Pier 167	21	Pier 148	36	Pier 134
7	Pier 166	22	Pier 147	37	Pier 133
8	Pier 161	23	Pier 146	38	Pier 132
9	Pier 160	24	Pier 145	39	Pier 131
10	Pier 159	25	Pier 144	40	Pier 130
11	Pier 158	26	Pier 143	41	Pier 129
12	Pier 157	27	Pier 142	42	Pier 128
13	Pier 156	28	Pier 141	43	Pier 127
14	Pier 155	29	Pier 140	44	Pier 126
15	Pier 154	30	Pier 139	45	Pier 125

EXHIBIT A SCOPE OF SERVICES

Table 1 continued. REL Pier Numbers

No.	Pier Number	No.	Pier Number	No.	Pier Number
46	Pier 122	86	Pier 82	126	Pier 37
47	Pier 121	87	Pier 81	127	Pier 36
48	Pier 120	88	Pier 80	128	Pier 35
49	Pier 119	89	Pier 79	129	Pier 34
50	Pier 118	90	Pier 78	130	Pier 33
51	Pier 117	91	Pier 77	131	Pier 32
52	Pier 116	92	Pier 76	132	Pier 31
53	Pier 115	93	Pier 75	133	Pier 30
54	Pier 114	94	Pier 74	134	Pier 25
55	Pier 113	95	Pier 73	135	Pier 24
56	Pier 112	96	Pier 72	136	Pier 23
57	Pier 111	97	Pier 71	137	Pier 22
58	Pier 110	98	Pier 70	138	Pier 21
59	Pier 109	99	Pier 69	139	Pier 20
60	Pier 108	100	Pier 68	140	Pier 19
61	Pier 107	101	Pier 67	141	Pier 18
62	Pier 106	102	Pier 66	142	Pier 17
63	Pier 105	103	Pier 65	143	Pier 16
64	Pier 104	104	Pier 64	144	Pier 15
65	Pier 103	105	Pier 63	145	Pier 14
66	Pier 102	106	Pier 62	146	Pier 13
67	Pier 101	107	Pier 61	147	Pier 12
68	Pier 100	108	Pier 60	148	Pier 11
69	Pier 99	109	Pier 59	149	Pier 10
70	Pier 98	110	Pier 58	150	Pier 9
71	Pier 97	111	Pier 57	151	Pier 8
72	Pier 96	112	Pier 56	152	Pier 7
73	Pier 95	113	Pier 55	153	Pier 6
74	Pier 94	114	Pier 54	154	Pier 5
75	Pier 93	115	Pier 53	155	Pier 4
76	Pier 92	116	Pier 52	156	Pier 3
77	Pier 91	117	Pier 51	157	Pier 2
78	Pier 90	118	Pier 50		
79	Pier 89	119	Pier 49		
80	Pier 88	120	Pier 48		
81	Pier 87	121	Pier 47		
82	Pier 86	122	Pier 41		
83	Pier 85	123	Pier 40		
84	Pier 84	124	Pier 39		
85	Pier 83	125	Pier 38		

The scope of work includes the grounding of the lighting brackets located on the 13 straddle bents. Table 2 lists the various straddle bent numbers.

EXHIBIT A SCOPE OF SERVICES

Table 2. REL Straddle Bent Numbers

No.	Straddle Bent Number	No.	Straddle Bent Number
1	165	8	43
2	164	9	42
3	163	10	29
4	162	11	28
5	46	12	27
6	45	13	26
7	44		

The scope of work includes the grounding of the lighting brackets located on the abutments. Table 3 lists the abutment number.

Table 3. REL Abutment Numbers

No.	Abutment Number
1	1

PIER WORK

The pier work includes the installation of a new ground bus bar and connection to the common ground within the existing Junction Box Δ inside the bridge deck. Provide an insulated ground wire from the ground bus bar located within the existing Junction Box Δ to a new ground bus bar in a new pier mounted junction box. Figure 1 shows the location of the existing Junction Box Δ. Figure 2 shows the existing splices, proposed ground bus bar, and the ground wire in Junction Box Δ.

Figure 1. JUNCTION BOX INSIDE THE BRIDGE DECK

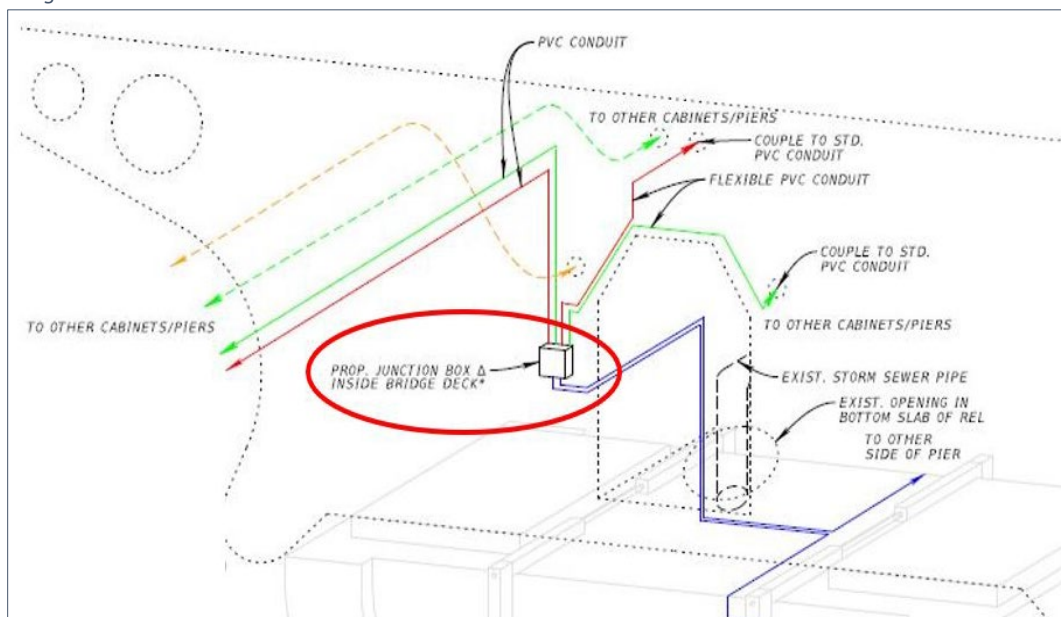
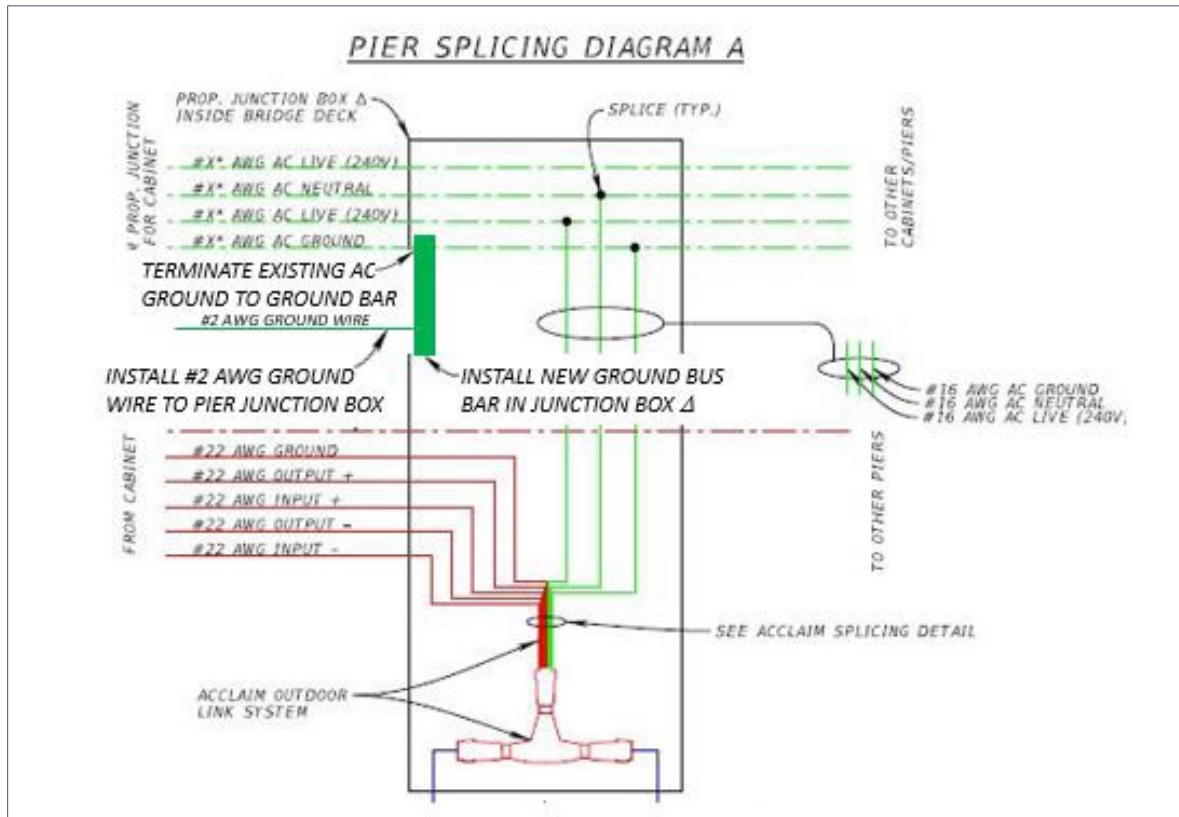


EXHIBIT A SCOPE OF SERVICES

Figure 2. EXISTING SPLICES INSIDE THE JUNCTION BOX



At each pier, install ground straps from each bracket arm to the ground bus bar in the new junction box. In addition, install a 1" conduit with a #2 AWG ground wire from the ground bus bar in the new junction box to the new pull box and new ground rod at the base of the pier. See Figures 3 through 6.

All proposed exposed conduits (flexible and rigid) as shown in Figures 2, 3, 5 and 6 shall be supported with two-hole conduit straps attached to surfaces with wall anchors and screws. Supporting of proposed exposed conduits shall be in accordance with The National Electrical Code (NEC) and Florida Department of Transportation, July 2022 Standard Specifications for Road and Bridge Construction, Section 630.

EXHIBIT A SCOPE OF SERVICES

Figure 3. GROUND WIRE ROUTING UPPER PIER

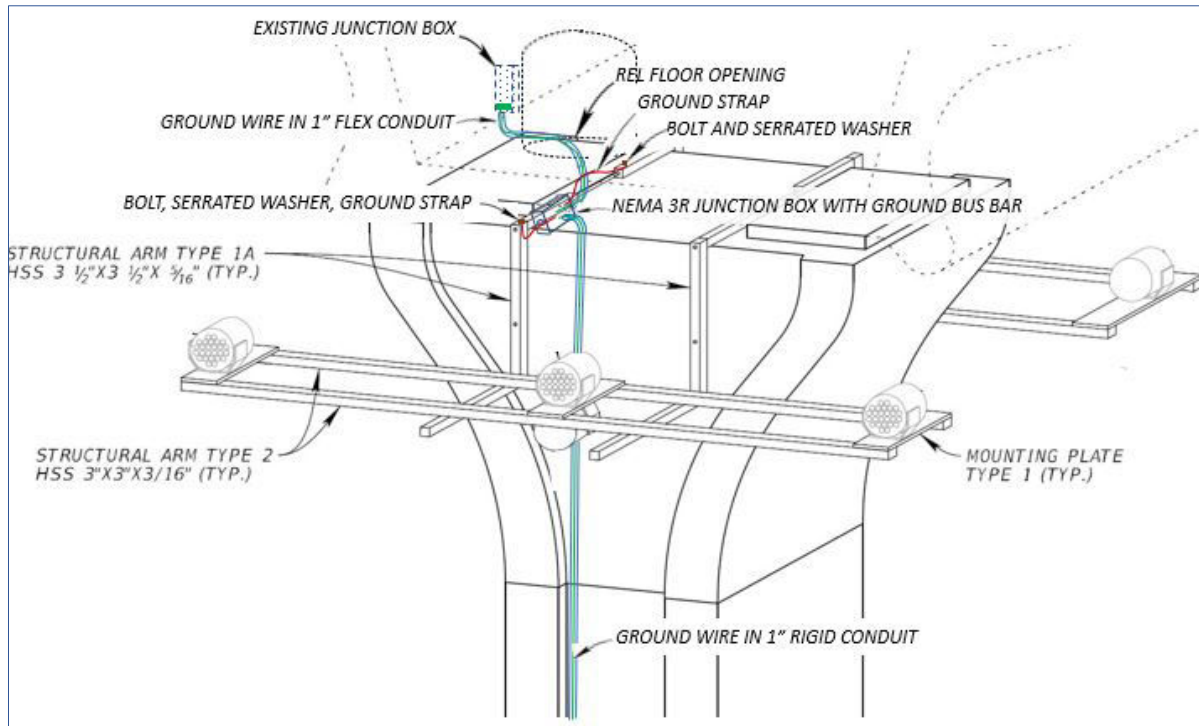


Figure 4. GROUND WIRE ROUTING LOWER PIER

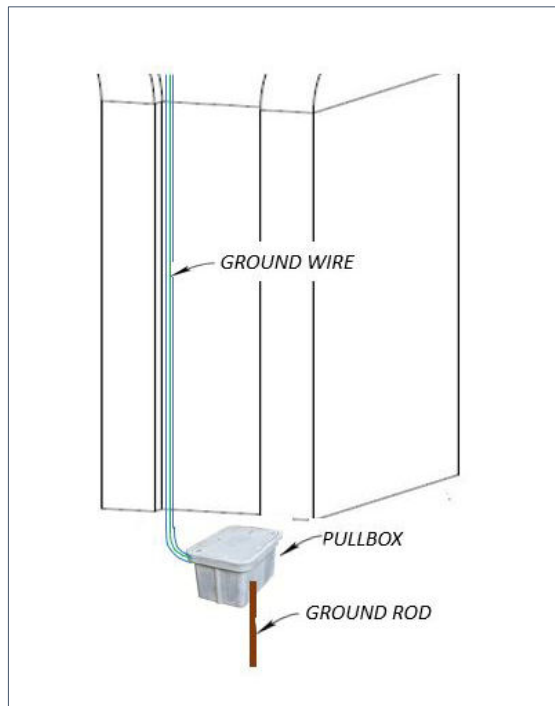


EXHIBIT A SCOPE OF SERVICES

Figure 5. GROUND WIRE ROUTING SECTION VIEW

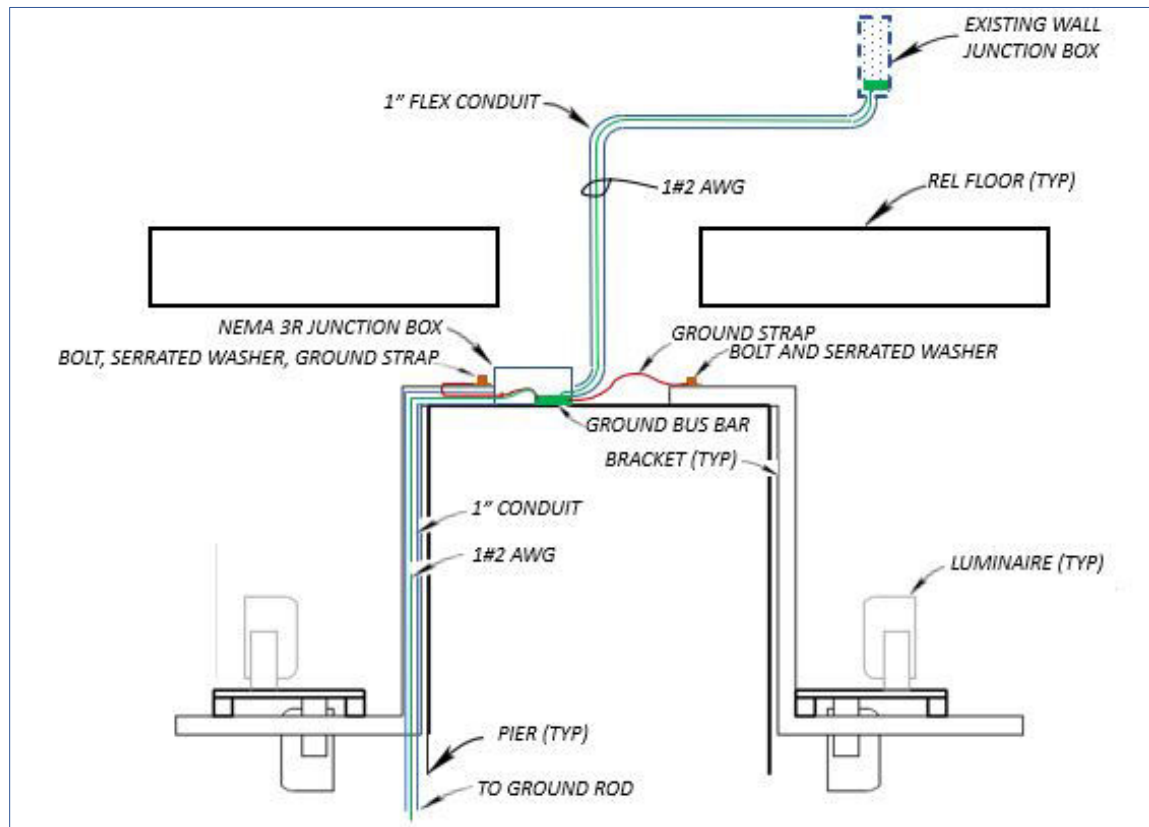


Figure 6. GROUND WIRE ROUTING PLAN VIEW

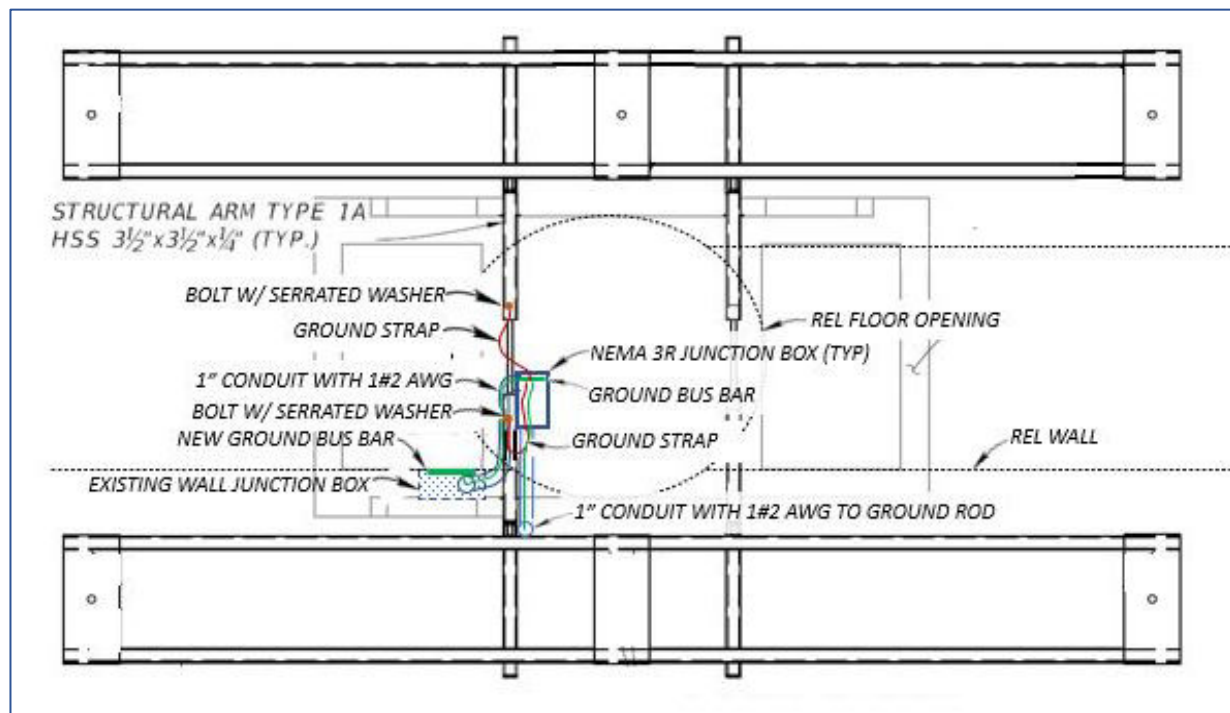


EXHIBIT A SCOPE OF SERVICES

STRADDLE BENT WORK

The straddle bent work includes the connection of ground straps from bracket arms to the common ground located in the existing junction box. Install a new junction box with a ground bus bar at one of the legs of the straddle bent. Install a 1" conduit with a #2 AWG ground wire from the junction box to the pull box and ground rod at the base of the straddle bent leg. Install a 1" conduit with a #2 AWG ground wire from the luminaire on the opposite leg to the new junction box ground bus bar. Install a 1" conduit with a #2 AWG ground wire from the straddle bent arm bracket to the new junction box ground bus bar. Install a ground strap from the near side luminaire to the junction box. See Figures 7 through 10.

All proposed exposed conduits (flexible and rigid) as shown in Figures 7 through 11 shall be supported with two-hole conduit straps attached to surfaces with wall anchors and screws. Supporting of proposed exposed conduits shall be in accordance with The National Electrical Code (NEC) and Florida Department of Transportation, July 2022 Standard Specifications for Road and Bridge Construction, Section 630.

Figure 7. STRADDLE BENT GROUND WIRE ROUTING

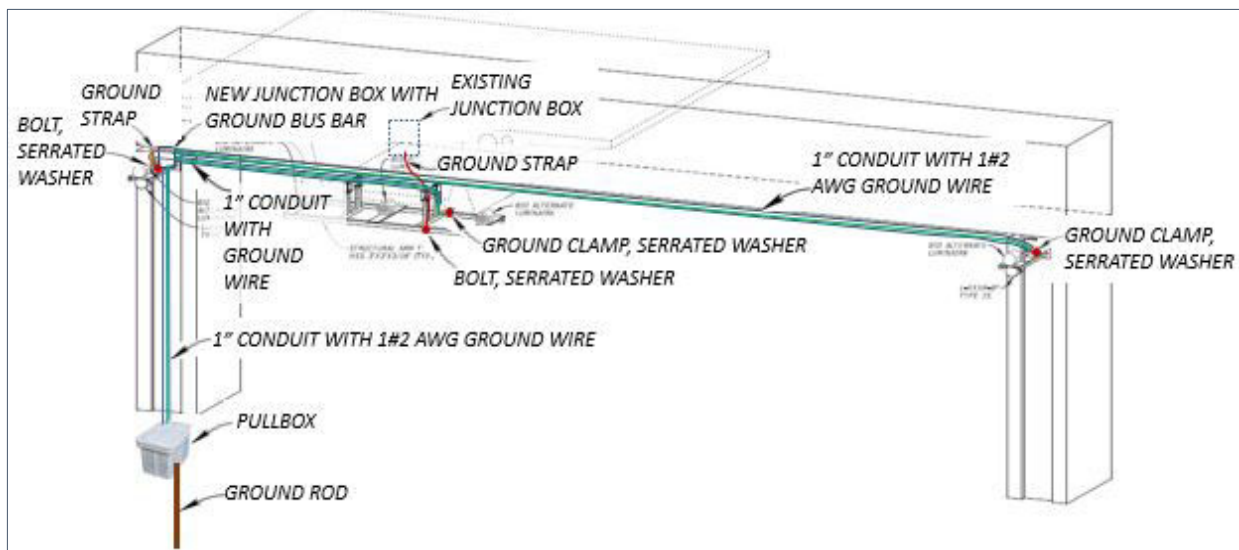


EXHIBIT A SCOPE OF SERVICES

Figure 8. STRADDLE BENT ARM BRACKET GROUND WIRE ROUTING

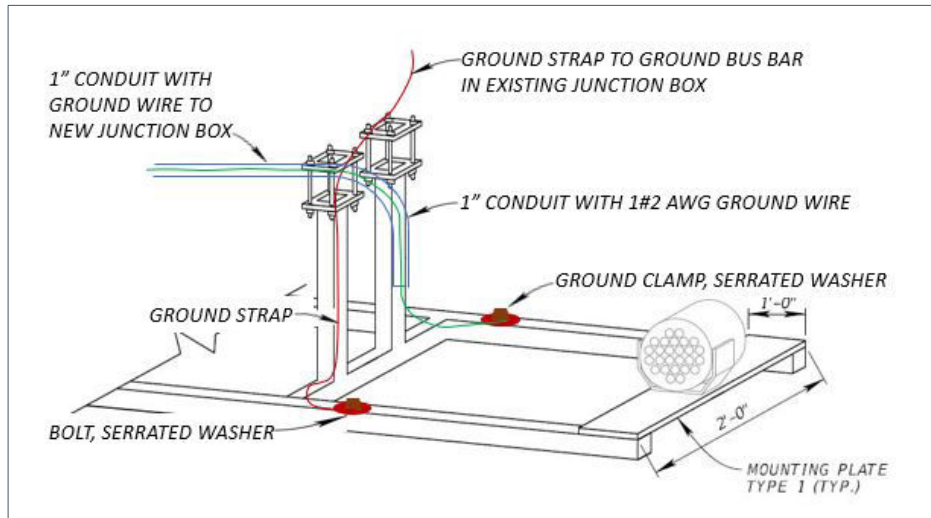


Figure 9. STRADDLE BENT ARM GROUND WIRE ROUTING

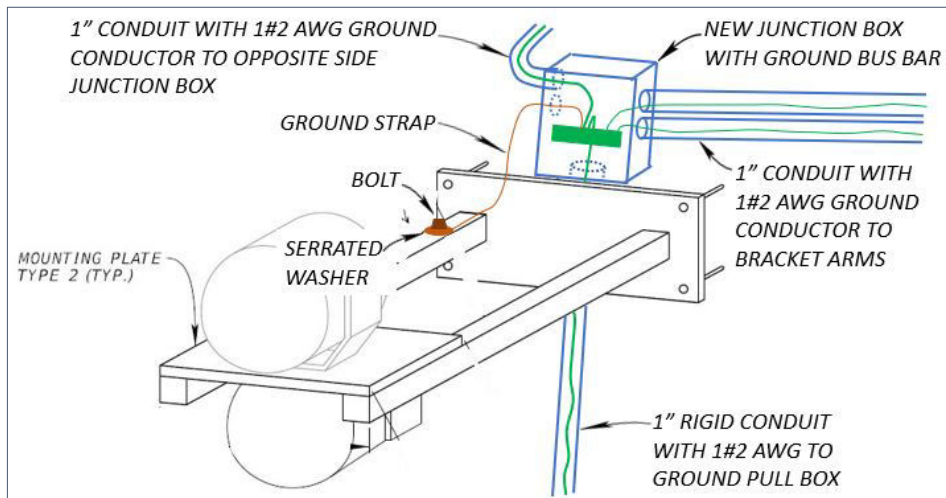
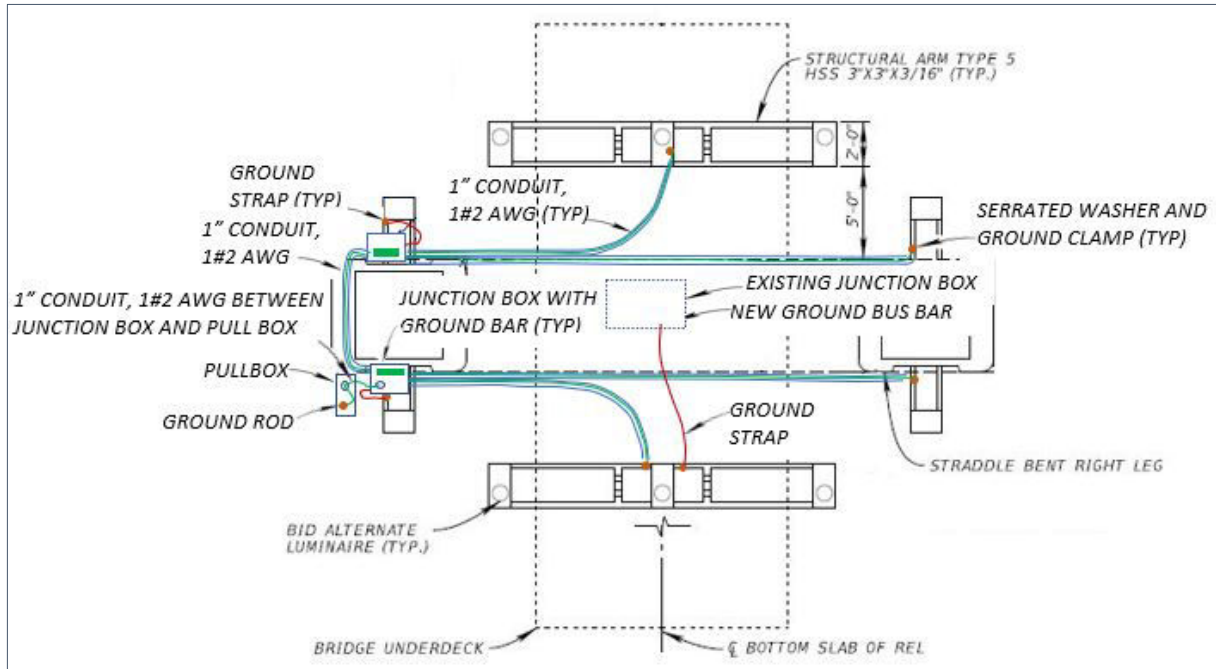


EXHIBIT A SCOPE OF SERVICES

Figure 10. STRADDLE BENT GROUND WIRE ROUTING PLAN VIEW

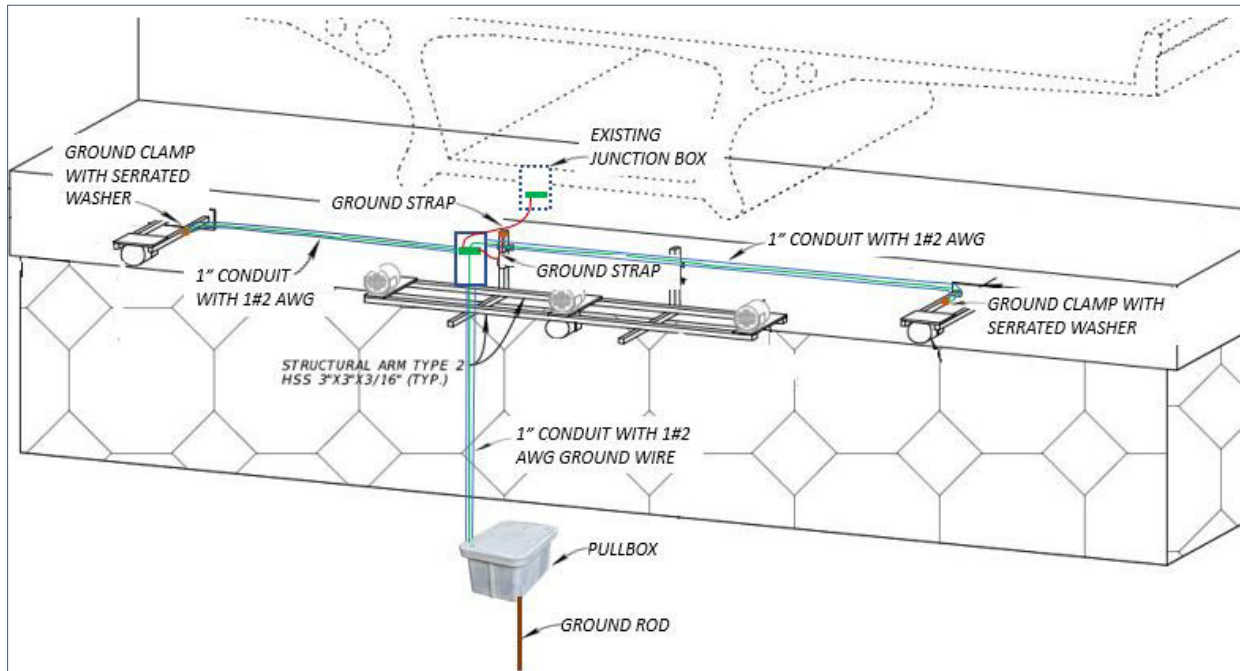


ABUTMENT WORK

The abutment work includes the installation of a new junction box containing a ground bus bar. Install a new ground bus bar in the existing junction box and connect the existing AC ground circuit. Connect both ground bus bars with a ground strap. Install a 1" conduit and insulated ground wire from the bracket arms to the ground bus bar in the new junction box. Install a 1" rigid conduit and a #2 AWG ground wire from the new junction box to the pull box and ground rod at the base of the abutment. See Figure 11.

EXHIBIT A SCOPE OF SERVICES

Figure 11. ABUTMENT GROUND WIRE ROUTING



GROUND CLAMP, GROUND STRAP, AND SERRATED WASHER INSTALLATION

The ground wire and ground strap shall be terminated to the bracket arms with a connection mechanism that penetrates the powder coating to create the electrical grounding desired. Ensure that a proper electrical contact is achieved between the ground clamp, ground strap connector, serrated washer, and the bracket arm. See Figures 12 and 13.

Figure 12. GROUND CLAMP WITH SERRATED WASHER

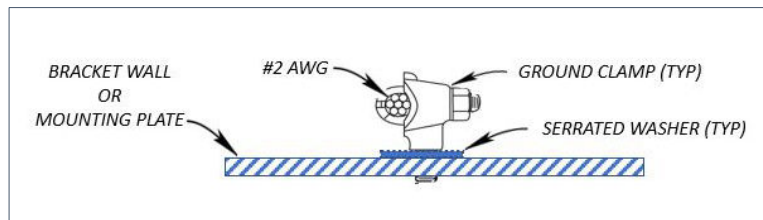


Figure 13. GROUND STRAP WITH SERRATED WASHER

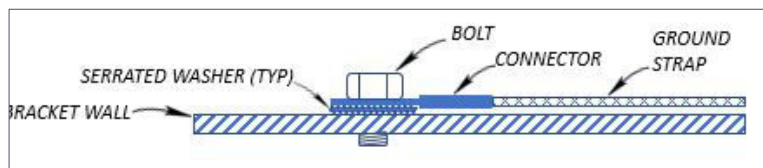


EXHIBIT A

SCOPE OF SERVICES

At each ground clamp and ground strap, measure the resistance of the connection mechanism once grounding has been achieved and provide a reading at each termination point for each pier, straddle bent, and abutment. The resistance of the connection shall be 0.1 ohms or less. Submit the results of testing to the Engineer for approval. The following testing procedure is being suggested:

- Scratch off a 1/8" x 1/8" area of paint from the bracket arm near the threaded rod opening or at the top of the mounting plate.
- Use an ohmmeter to measure the resistance between the ground clamp and the bare area of the bracket arm or mounting plate.
- Repair the scratch using an approved powder coating repair procedure.

The Contractor may propose a less invasive method of resistance testing.

GROUND ROD INSTALLATION, INSPECTION, AND ADJUSTMENT

Install a ground rod pull box at the base of each pier, straddle bent leg, or abutment, as described in Indexes 641-020 and 649-020. Install grounding in accordance with Section 620. Obtain a minimum resistance as required in 620-3.2.1. Conduct fall-of-potential testing in accordance with 620-4.1. Submit the test results and documentation to the Engineer for approval.

At the 11 load center locations, inspect and test, using the clamp-on ground resistance method, the existing ground system in accordance with 620-4.1. Submit the test results and documentation to the engineer.

Table 4. Load Center Name and Location

No.	Load Center Name	Location	Destination
1	AA	120+41.36	Pier 166
2	BB	141+98.65	Pier 151
3	CC	168+76.17	Pier 131
4	DD	209+43.47	Abutment 123
5	EE	218+76.06	Pier 121
6	FF	239+90.73	Pier 107
7	GG	266+27.25	Pier 88
8	HH	292+25.17	Pier 69
9	II	320+21.81	Pier 49
10	JJ	345+97.30	Pier 30
11	KK	373+98.67	Pier 10

AS-BUILT DOCUMENTATION

Take photos of the termination point at the bracket arms, mounting plates, and of the termination inside the junction box and pull box. Additionally, take photos of the pull box and ground rod installation at the piers, straddle bents, abutment, and the load centers.

EXHIBIT A
SCOPE OF SERVICES

Provide As-Built drawings of the installation.

EXHIBIT B

PUBLIC ENTITY CRIMES FORM

SWORN STATEMENT UNDER SECTION 287.133(3)(a), FLORIDA STATUTES

1. This sworn statement is submitted to Tampa-Hillsborough County Expressway Authority
by _____
[print individual's name and title]

for _____
[print name of entity submitting sworn statement]

whose business address is _____

and (if applicable) its Federal Employer Identification Number (FEIN) is _____

(If the entity has no FEIN, include the Social Security Number of the individual signing this
sworn statement: _____.)

2. I understand that a "public entity crime" as defined in a Paragraph 287.133(1)(g), Florida Statutes, means a violation of any state or federal law by a person with respect to and directly related to the transaction of business with any public entity or with an agency or political subdivision of any other state or of the United States, including, but not limited to, any bid or contract for goods or services to be provided to any public entity or an agency or political subdivision of any other state or of the United States and involving antitrust, fraud, theft, bribery, collusion, racketeering, conspiracy, or material misrepresentation.
3. I understand that "convicted" or "conviction" as defined in Paragraph 287.133(1)(b), Florida Statutes, means a finding of guilt or a conviction of a public entity crime, with or without an adjunction of guilt in any federal or state trial court of record relating to charges brought by indictment or information after July 1, 1989, as a result of a jury verdict, nonjury trial, or entry of a plea of guilty or nolo contendere.
4. I understand that an "affiliate" as defined in Paragraph 287.133 (1)(a), Florida Statutes, means:
- i. A predecessor or successor of a person convicted of a public entity crime; or
 - ii. An entity under the control of any natural person who is active in the management of the entity and who has been convicted of a public entity crime. The term "affiliate" includes those officers, directors, executives, partners, shareholders, employees, members, and agents who are active in the management of the affiliate. The ownership by one person of shares constituting a controlling interest in another person, or a pooling of equipment or income among persons when not for fair market value under an arm's length agreement, shall be prima facie case that one person controls another person. A person who knowingly enters into a joint venture with a person who has been convicted of a public entity crime in Florida during the preceding 36 months shall be considered an affiliate.
5. I understand that a "person" as defined in Paragraph 287.133(1)(e), Florida Statutes, means any natural person or entity organized under the laws of any state or of the United States with the legal power to enter into a binding contract and which bids or applies to bid on contracts for the provision of

EXHIBIT B

goods or services let by a public entity. The term "person" includes those officers, directors, executives, partners, shareholders, employees, members, and agents who are active in management of an entity.

6. Based on the information and belief, the statement which I have marked below is true in relation to the entity submitting this sworn statement. **[indicate with a check mark which statement applies.]**

_____ Neither the entity submitting this sworn statement, nor any officers, directors, executives, partners, shareholders, employees, members, or agents who are active in the management of entity, nor any affiliate of the entity has been charged with and convicted of a public entity crime subsequent to July 1, 1989.

_____ The entity submitting this sworn statement, or one or more of its officers, directors, executives, partners, shareholders, employees, members or agents who are active in the management of the entity, or an affiliate of the entity has been charged with and convicted of a public entity crime subsequent of July 1, 1989.

_____ The entity submitting this sworn statement, or one or more of its officers, directors, executives, partners, shareholders, employees, members or agents who are active in the management of the entity, or an affiliate of the entity has been charged with and convicted of a public entity crime subsequent of July 1, 1989. However, there has been a subsequent proceeding before a Hearing Officer of the State of Florida, Division of Administrative Hearings and the Final Order entered by the hearing Officer determined that it was not in the public interest to place the entity submitting this sworn statement on the convicted vendor list. **[attach a copy of the final order]**

I UNDERSTAND THAT THE SUBMISSION OF THIS FORM TO THE CONTRACTING OFFICER FOR THE PUBLIC ENTITY IDENTIFIED IN PARAGRAPH 1 (ONE) ABOVE IS FOR THAT PUBLIC ENTITY ONLY AND, THAT THIS FORM IS VALID THROUGH DECEMBER 31 OF THE CALENDAR YEAR IN WHICH IT IS FILED. I ALSO UNDERSTAND THAT I AM REQUIRED TO INFORM THE PUBLIC ENTITY PRIOR TO ENTERING INTO A CONTRACT IN EXCESS OF THE THRESHOLD AMOUNT PROVIDED IN SECTION 287.017, FLORIDA STATUTES FOR CATEGORY TWO OF ANY CHANGE IN THE INFORMATION CONTAINED IN THIS FORM.

Signature

Date

State of _____

County of _____

PERSONNALLY APPEARED BEFORE ME, the undersigned authority,

_____, who, after first being sworn by me, affixed his/her signature in
[Name of individual signing]

the space provided above on this _____ day of _____, 20_____.

Notary Public

My commission expires: _____

EXHIBIT B

[Notary Seal]

EXHIBIT C

DRUG-FREE WORKPLACE FORM

The undersigned firm, in accordance with Florida Status 287.087 hereby certifies that

_____ does:

Name of Business

1. Publish a statement of notifying employees that the unlawful manufacture, distribution, dispensing, possession, or use of a controlled substance is prohibited in the workplace and specifying the actions that will be taken against employees for violations of such prohibition.
2. Inform employees about the dangers of drug abuse in the workplace, the business's policy of maintaining a drug-free workplace, any available drug counseling, rehabilitation, and employee assistance programs, and the penalties that may be imposed upon employees for drug abuse violations.
3. Give each employee engaged in providing the commodities or contractual services that are under bid a copy of the statement specified in Paragraph 1.
4. In the statement specified in paragraph 1, notify the employees that, as a condition of working on the commodities or contractual services that are under bid, the employees will abide by the terms of a statement and will notify the employer of any conviction of, or plea of guilty or nolo contendere to, any violation of Florida Statute 893 or of any controlled substance law of the United States or any state, for a violation occurring in the workplace no later than five (5) days after such conviction.
5. Impose a sanction of, or require the satisfactory participation in a drug abuse assistance or rehabilitation program if such is available in the employee's community, by any employee who is convicted.
6. Make a good faith effort to continue to maintain a drug-free workplace through implementation of paragraphs 1 thru 5.

As the person authorized to sign this statement, I certify that this firm complies with the above requirements.

Firm's Signature

Date

EXHIBIT D

PRICE PROPOSAL FORM

(Print this page on bidder's letterhead and attach with response)

Date: _____

TAMPA-HILLSBOROUGH COUNTY EXPRESSWAY AUTHORITY (THEA)

Attention: Procurement Department

Shannon Bush, Contracts and Procurement Manager

1104 East Twiggs Street, Suite 300

Tampa, FL 33602

Subject: _____

Dear THEA:

Having carefully examined the Instructions to Bidders, Supplementary Instructions to Bidders, General Provisions, Supplementary General Provisions, Special Provisions and Technical Specifications, Plans or Drawings (if issued), of the above subject project and contract, as well as the premises and the conditions affecting the work, the undersigned proposes to furnish all labor and materials called for by them and equipment necessary and to accomplish the entire work within the time period indicated in accordance with the said documents for the prices presented in the price schedules included on the attached BID TABULATION SHEET.

The undersigned acknowledges that they understand the following conditions that within the price schedules amounts indicated with brackets around the amounts are considered to be deductions or credits to the overall project cost. Calculations of price schedule extensions and price totals shall appropriately account for individual deductive and additive pay items.

TOTAL LUMP SUM PRICE: \$ _____

WRITTEN AMOUNT:

_____ **DOLLARS AND** _____ **CENTS**

The undersigned firm agrees to keep this offer open for acceptance for One Hundred Twenty (120) days after date of opening the bid proposal package.

The signer of this bid proposal package hereby declares that the only person, persons, company or parties interested in this bid proposal package as principals are named herein, that this bid proposal package is made without connection with any other person, persons, company or parties submitting a proposal; and that it is in all respects fair and in good faith, without collusion or fraud.

Name of Respondent

Authorized Signature

Date

EXHIBIT E

CONFLICT OF INTEREST STATEMENT

Check one of the boxes below:

- ☐ To the best of our knowledge, the undersigned bidder has no potential conflict of interest due to any other clients, contracts, or property interest for this solicitation and project.

OR

- ☐ The undersigned bidder, by attachment to this form, submits information which **may** be a potential conflict of interest due to other clients, contracts or property interest for this solicitation and project.

BIDDER:

By: _____
Authorized Signature

Printed Name of Signer

Title of Signer

Date Signed

EXHIBIT F

CERTIFICATION REGARDING SCRUTINIZED COMPANIES LISTS

This certification is required pursuant to Florida Statute, Section 287.135.

A company that, at the time of bidding or submitting a proposal for a new contract or renewal of an existing contract, is on the Scrutinized Companies with Activities in Sudan List or the Scrutinized Companies with Activities in the Iran Petroleum Energy Sector List, Iran Terrorism Sectors List, or is engaged in business operations in Cuba or Syria, is ineligible for, and may **not** bid on, submit a proposal for, or enter into or renew a contract with an agency or local government entity for goods or services of \$1 million or more.

Respondent / Bidder

Name: _____

Respondent /Bidder FID or EIN:

Address: _____

City: _____ State: _____ Zip: _____

I hereby warrant that I am duly authorized to sign and bind on behalf of the company listed above as the "Respondent/Bidder".

I hereby certify and affirm that the company listed above as the "Respondent/Bidder" is not listed on either the Scrutinized Companies with Activities in Sudan List or the Scrutinized Companies with Activities in the Iran Petroleum Energy Sector List, Iran Terrorism Sectors List, created pursuant to Florida Statute Section 215.473, or engaged in business operations in Cuba or Syria.

I understand pursuant to Florida Statute, Section 287.135, the submission of a false certification may subject the Respondent/Bidder to civil penalties, attorney's fees and/or costs.

RESPONDENT/BIDDER:

By: _____
(Authorized Signature)

(Printed Name of Signer)

(Title of Signer)

(Date Signed)

ATTACHMENT NO. 1

TECHNICAL SPECIAL PROVISION

FOR

**T715 HIGHWAY LIGHTING SYSTEM – AESTHETIC LIGHTING BRACKET
GROUNDING**

FINANCIAL PROJECT ID(S): O-0ABCD

This item has been digitally signed and sealed by Malcolm Tomatani on the date adjacent to the seal. Printed copies of this document are not considered signed and sealed and the signature must be verified on any electronic copies.

Date:	<u>August 26, 2022</u>
Fla. License No.:	<u>65465</u>
Firm Name:	<u>HNTB Corporation</u>
Firm Address:	<u>201 North Franklin Street, Suite 1200</u>
City, State, Zip Code:	<u>Tampa, FL 33602</u>
Page(s):	<u>1-2</u>

T715 – HIGHWAY LIGHTING SYSTEM – AESTHETIC LIGHTING BRACKET GROUNDING SYSTEM

T715-1 Description.

Furnish and install grounding and lightning protection to provide personnel and equipment protection against faults, surge currents, and lightning transients. Provide a grounding and lightning protection system in accordance with the details shown in the Scope of the Work.

T715-2 Materials.

T715-2.1 Conduit: Meet the requirements of Section 630.

T715-2.2 Junction Box: Meet the requirements of Section 635.

T715-2.3 Pull Box: Meet the requirements of Section 635.

T715-2.4 Grounding Conductors: Provide a No. 2 AWG stranded copper insulated conductor in accordance with ASTM B8 and color code the grounding conductor green.

T715-2.5 Transformer Ground Clamp: Provide a high strength, high conductivity cast copper alloy, 1/2 Inch-13 TPI (thread per inch) stud diameter transformer ground clamp.

T715-2.6 Serrated Grounding Washer: Provide paint piercing corrosion resistant serrated grounding washers to provide an electrically conductive path for the grounding system.

T715-2.7 Ground Bus Bar: Provide a bus bar capable of terminating the grounding conductors and ground straps.

T715-2.8 Ground Rod: Meet the requirements of Section 715 and Index 715-001.

T715-2.9 Ground Strap: Provide a one inch wide, braided, tin-coated copper, ground strap.

T715-3 Installation Requirements.

T715-3.1 General: At each pier, straddle bent, and abutment location, install the grounding conductors from the metal bracket arms to the ground bus bar in the new junction box. Connect the existing common ground system located within the existing junction boxes to the new ground system. Install grounding conductors from the new common ground system to a new ground rod.

Terminate one end of the ground conductor or ground strap to the bracket arm with a ground clamp or bolt and a serrated washer. Prepare the surface of the bracket arm or the mounting plate by removing the powder coated paint at the transformer ground clamp or bolt location described in the Scope of Work. Drill and tap the bracket for the transformer ground clamp or bolt. Torque the clamp screw or bolt to 22 foot pounds. Terminate the other end of the ground conductor or ground strap on the ground busbar inside the existing junction box or new junction box.

Install a ground rod pull box. Install ground rods in accordance with Section 715. Terminate one end of the ground conductor to the ground busbar inside the new junction box. Terminate the other end of the ground conductor to the ground rod.

T715-3.2 Testing: For each aesthetic light bracket, measure the resistance of the connection between the ground clamp or bolt and the metal bracket to ensure the electrical connectivity of the serrated washer and the penetrating screw. The resistance shall be less than or equal to 0.1 ohm. Submit the testing procedure to the Engineer for approval.

For each ground rod, measure the resistance in accordance with 620-4.1 and

meet the minimum resistance as required in 620-3.2.1. Submit the test results to the Engineer for approval.

T715-3.3 Documentation: Provide the resistance measurement for each bracket. Take photos of each termination point at the bracket, at the bus bar, and within each of the existing and new junction boxes and ground rod pull boxes. Provide ground rod test results. Provide As-Built drawings of the installation.

T715-4 Method of Measurement.

The quantity to be paid for will be lump sum for all conduit, pull boxes, junction boxes, ground bus bars, conductors, straps, terminators, grounding material, furnished and installed, tested, documented, and accepted.

T715-5 Basis of Payment

Price and payment will be full compensation for all work specified in this Technical Special Provision.

Payment will be made under:

Item No. 715-50- Bracket Grounding System – lump sum.