



FACT SHEET

Selmon Expressway Repaving Project

Overview

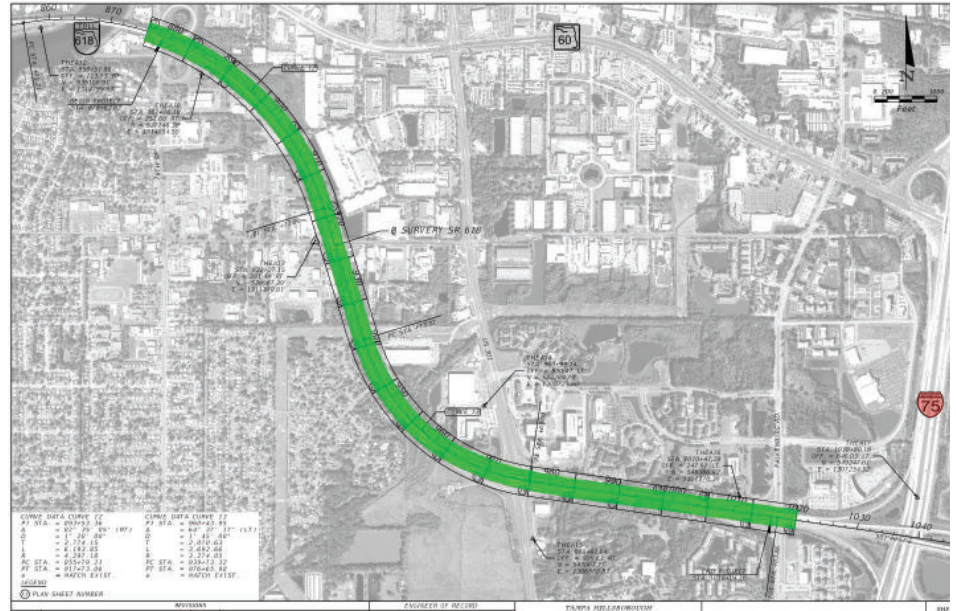
The Tampa Hillsborough Expressway Authority (THEA) is reinvesting toll dollars to improve the Selmon Expressway in an effort to enhance daily commutes for our customers. This project will repave the roadway from 78th Street to Falkenburg Road to ensure a smoother and safer driving experience for all users.

Project Details

- **Repaving Work:** The project involves resurfacing the roadway to improve durability and ride quality.
- **Timeline:** January 2025 - April 2025
- **Work Schedule:** Construction activities will occur during off-peak hours to minimize traffic disruptions:
 - **Daytime: 9:00 a.m. – 3:00 p.m.**
 - **Nighttime: 7:00 p.m. – 5:00 a.m.**
- **Traffic Management:**
 - Lane closures and detours will be carefully planned to ensure safety and convenience.
 - Detours will not be required for Reversible Express Lanes (REL) ramp closures.
 - Temporary traffic control signage will be in place, including Portable Changeable Message Signs (PCMS).
 - All lanes will reopen promptly in case of emergencies.
- **Safety First:** Local law enforcement and emergency services will be notified of construction activities to ensure public safety.

What This Means for You

- **Improved Commute:** A smoother, safer driving surface will reduce wear and tear on vehicles and enhance your daily travel experience.
- **Minimal Disruption:** Construction is scheduled during non-peak hours, and lane closures will be limited to avoid delays.



Commitment to Excellence

This project reflects THEA's ongoing commitment to reinvesting in the expressway to improve its reliability and ensure the best possible experience for our customers.

For project updates, please visit tampa-xway.com or contact us at info@tampa-xway.com.