

CONTRACT PLANS COMPONENTS

ROADWAY PLANS

**TAMPA HILLSBOROUGH
EXPRESSWAY AUTHORITY**

CONTRACT PLANS

PROJECT ID: O-00419

HILLSBOROUGH COUNTY (10002)

E. TWIGGS STREET UTILITY ADJUSTMENTS

INDEX OF ROADWAY PLANS

SHEET NO.	SHEET DESCRIPTION
1	KEY SHEET
2	SIGNATURE SHEET
3	GENERAL NOTES
UTV-1	SUMMARY OF VERIFIED UTILITIES
4 - 5	UTILITY ADJUSTMENT TYPICAL SECTION* ROADWAY PLAN*

* PLAN SHEETS PROVIDED FOR INFORMATION ONLY

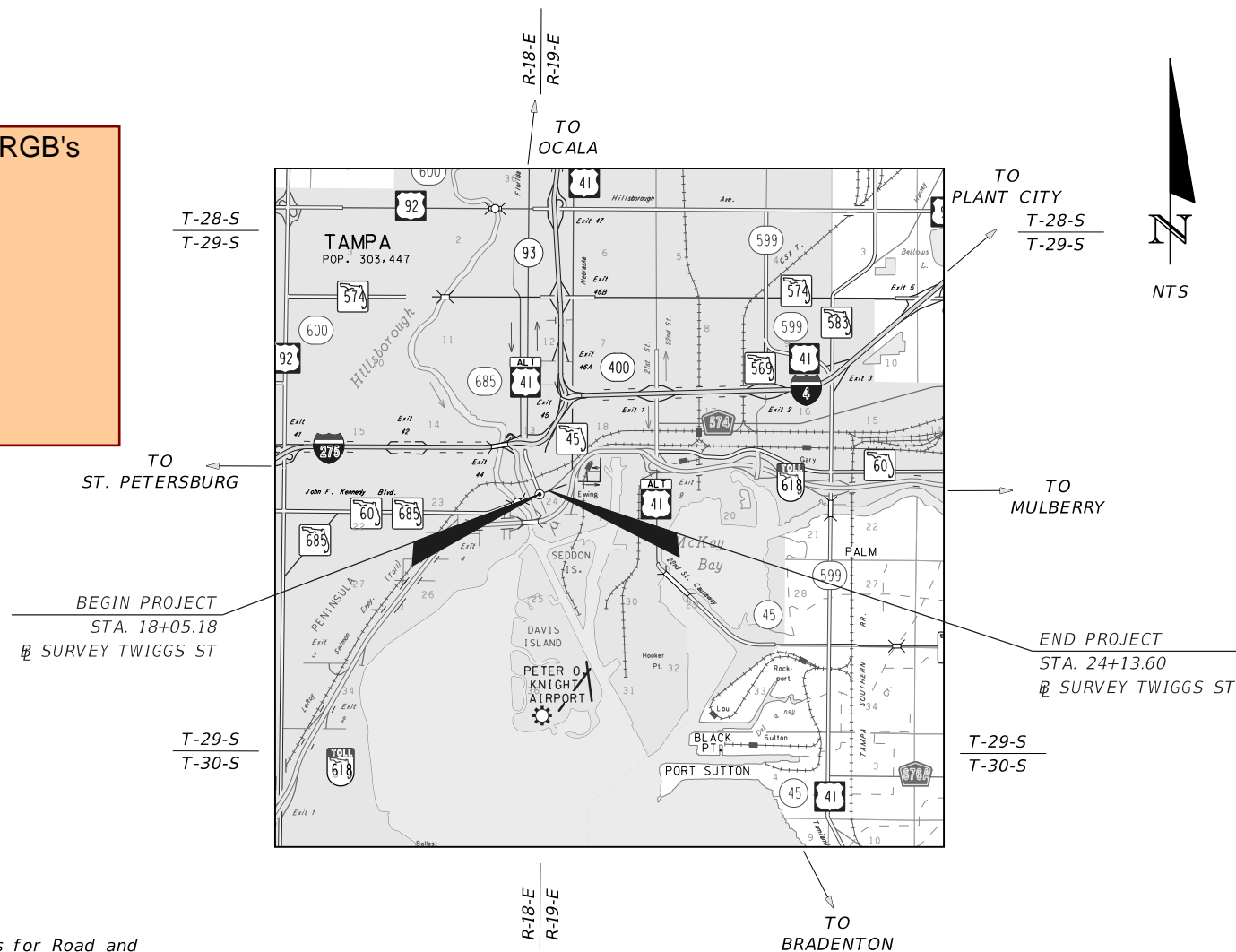
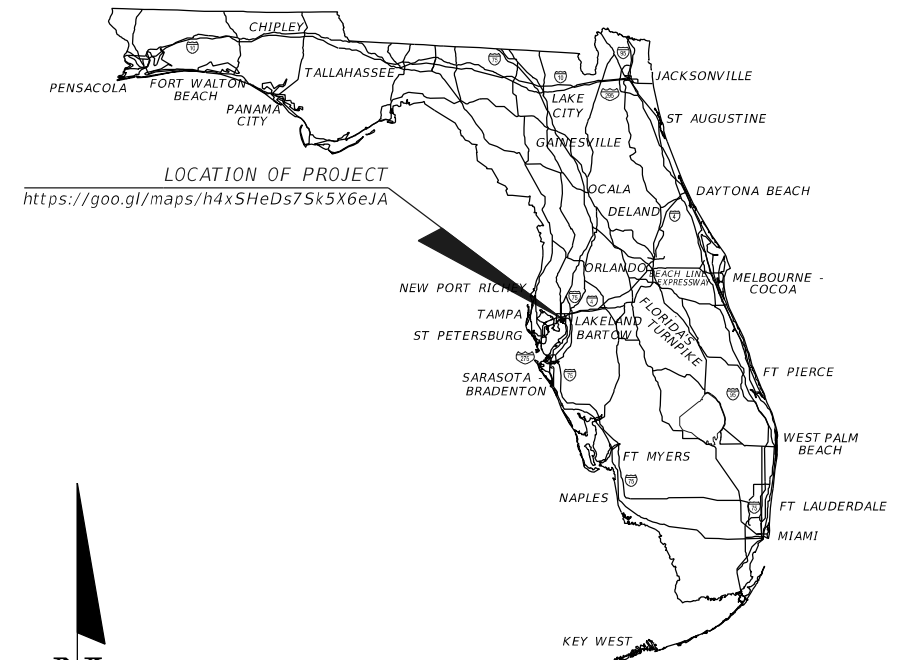
Charter / Spectrum / Bright House Networks RGB's

Manager : Mike Decroix

Supervisor : Scott Creasy

Coordinator : Mark Giurbino

813-436-2118



GOVERNING STANDARD PLANS:

Florida Department of Transportation, FY2018/19 Standard Plans for Road and Bridge Construction and applicable Interim Revisions (IRs).

Standard Plans for Road Construction and associated IRs are available at the following website: <http://www.fdot.gov/design/standardplans>

GOVERNING STANDARD SPECIFICATIONS:

Florida Department of Transportation, July 2018 Standard Specifications for Road and Bridge Construction at the following website: <http://www.fdot.gov/programmanagement/Implemented/SpecBooks>

**ROADWAY PLANS
ENGINEER OF RECORD:**

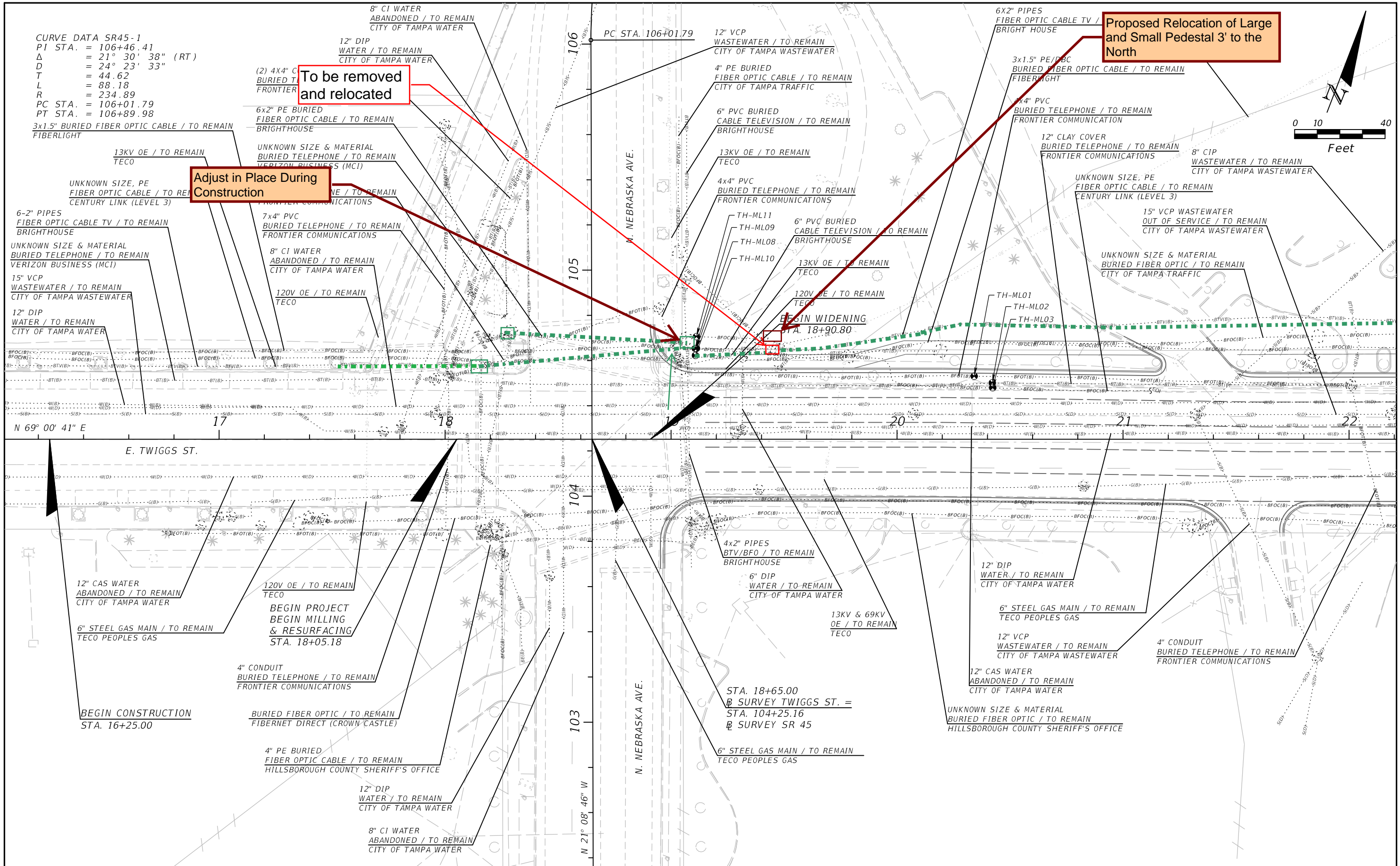
MEGAN M. TETRO, P.E. NO.: 76120
WANTMAN GROUP, INC.
3111 W. DR. MARTIN LUTHER KING JR. BLVD.,
SUITE 375, TAMPA, FL 33607
(813) 574-3190
CERTIFICATE OF AUTHORIZATION NO.: 6091

THEA PROJECT MANAGER:

DAVID MAY, P.E.

CONSTRUCTION CONTRACT NO.	FISCAL YEAR	SHEET NO.
		1

THE OFFICIAL RECORD OF THIS SHEET IS THE ELECTRONIC FILE DIGITALLY SIGNED AND SEALED UNDER RULE 61G15-23.004, F.A.C.

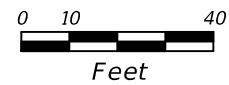


Proposed Relocation of Large and Small Pedestal 3' to the North

To be removed and relocated

Adjust in Place During Construction

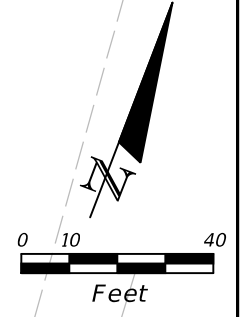
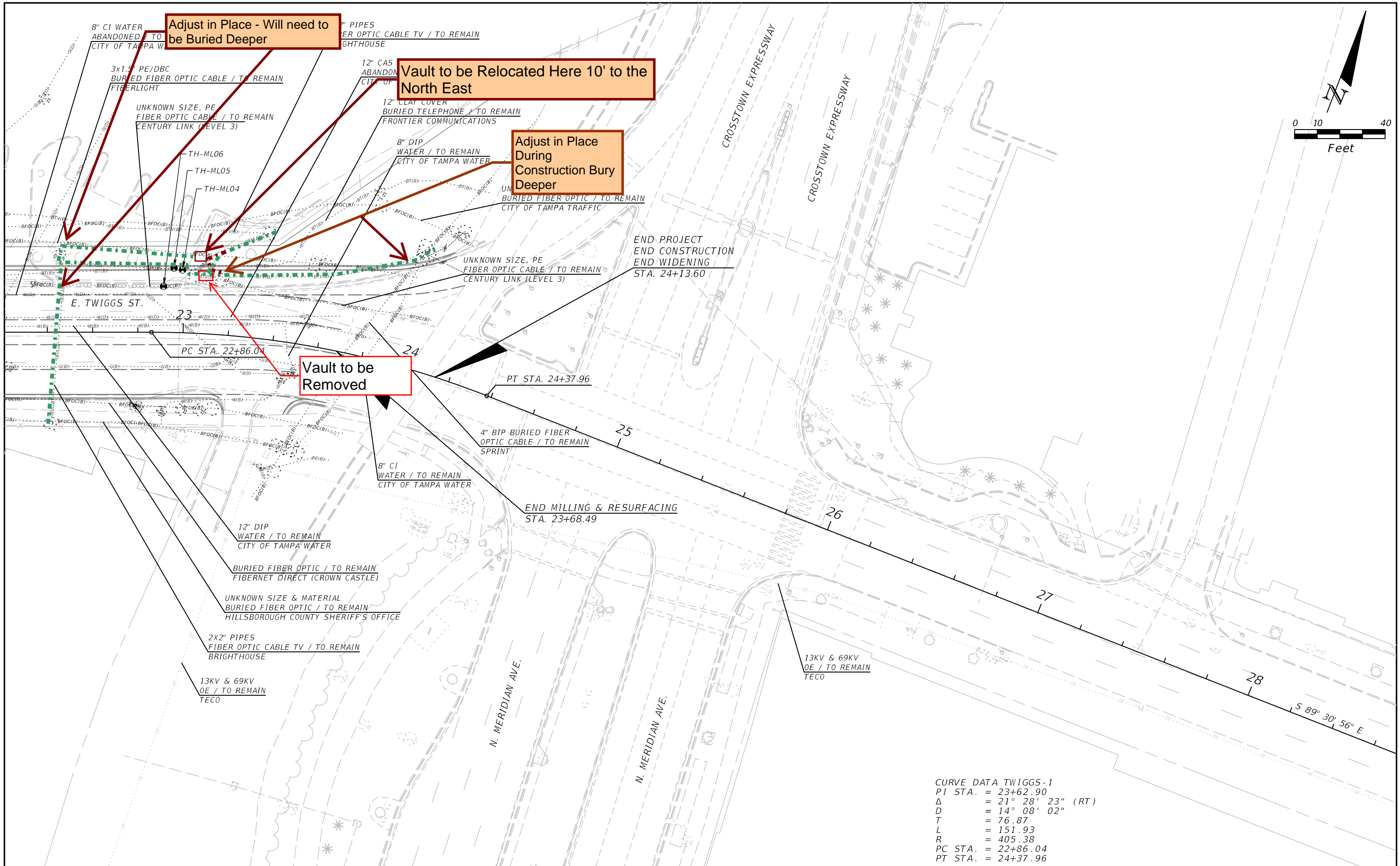
CURVE DATA SR45-1
 PI STA. = 106+46.41
 Δ = 21° 30' 38" (RT)
 D = 24° 23' 33"
 T = 44.62
 L = 88.18
 R = 234.89
 PC STA. = 106+01.79
 PT STA. = 106+89.98
 3x1.5" BURIED FIBER OPTIC CABLE / TO REMAIN
 FIBERLIGHT



REVISIONS				MEGAN M. TETRO, P.E. FLORIDA PE NO. 76120 WANTMAN GROUP, INC. 3111 W. MARTIN LUTHER KING JR. BLVD., SUITE 375, TAMPA, FL 33607 CERTIFICATE OF AUTHORIZATION NO. 6091	TAMPA HILLSBOROUGH EXPRESSWAY AUTHORITY			SHEET NO. 4
DATE	DESCRIPTION	DATE	DESCRIPTION		ROAD	COUNTY	CONTRACT NO.	
					TWIGGS	HILLSBOROUGH	000419	

UTILITY ADJUSTMENT (1)

THE OFFICIAL RECORD OF THIS SHEET IS THE ELECTRONIC FILE DIGITALLY SIGNED AND SEALED UNDER RULE 61G15-23.004, F.A.C.



CURVE DATA TWIGGS-1
 PI STA. = 23+62.90
 Δ = 21° 28' 23" (RT)
 D = 14° 08' 02"
 T = 76.87
 L = 151.93
 R = 405.38
 PC STA. = 22+86.04
 PT STA. = 24+37.96

REVISIONS				MEGAN M. TETRO, P.E. FLORIDA PE NO. 76120 WANTMAN GROUP, INC. 3111 W. MARTIN LUTHER KING JR. BLVD., SUITE 375, TAMPA, FL 33607 CERTIFICATE OF AUTHORIZATION NO. 6091	TAMPA HILLSBOROUGH EXPRESSWAY AUTHORITY			SHEET NO. 5
DATE	DESCRIPTION	DATE	DESCRIPTION		ROAD	COUNTY	CONTRACT NO.	
					TWIGGS	HILLSBOROUGH	000419	

THE OFFICIAL RECORD OF THIS SHEET IS THE ELECTRONIC FILE DIGITALLY SIGNED AND SEALED UNDER RULE 61G15-23.004, F.A.C.