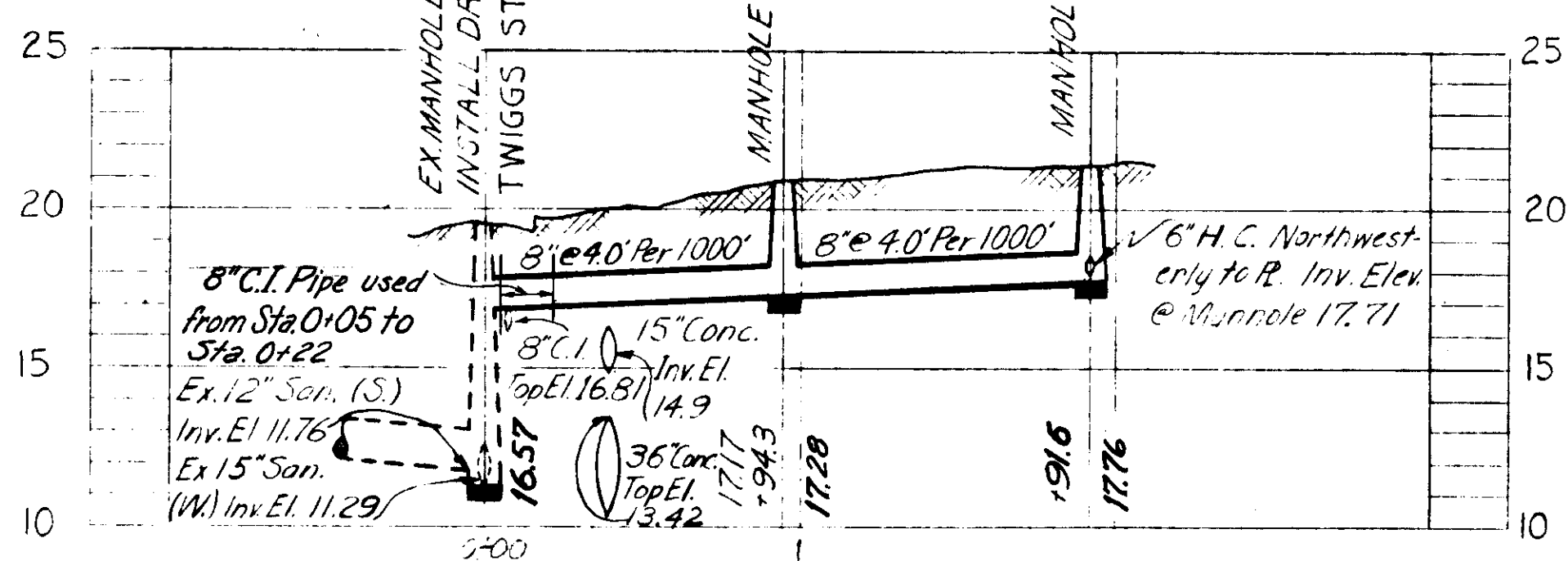
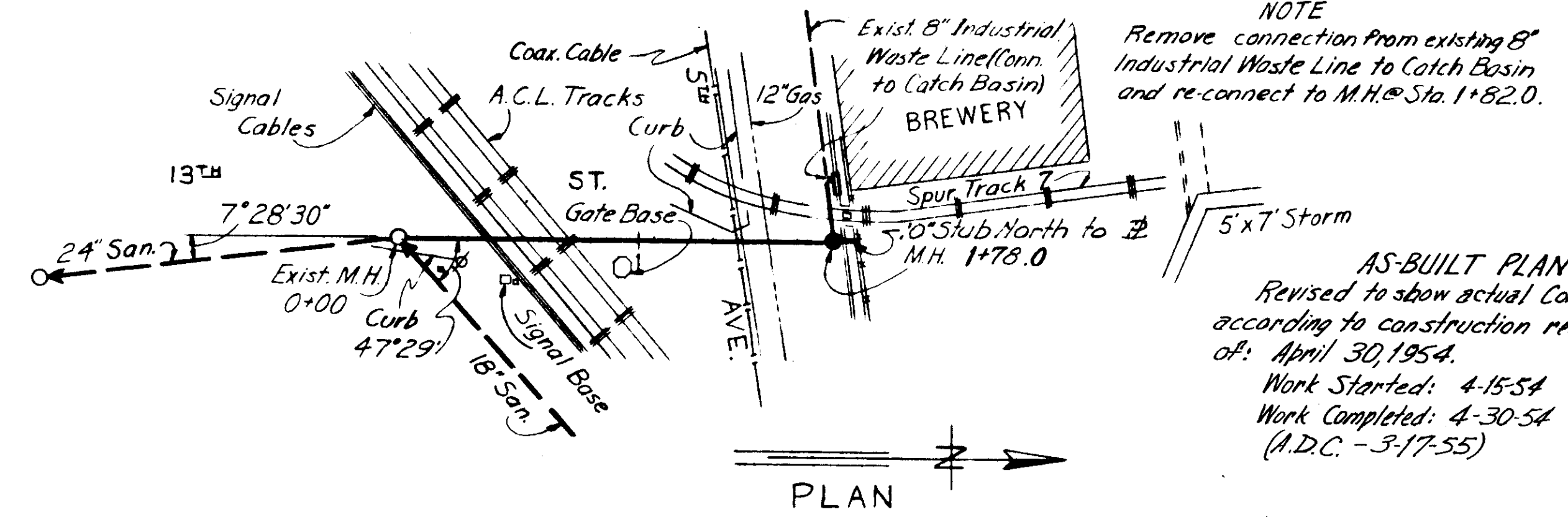


AS-BUILT PLAN
Revised to show actual conditions according to actual construction records as of: 4-9-54.
Work Started: 4-1-54
Work Completed: 4-9-54.
(A.D.C. 3-17-55)

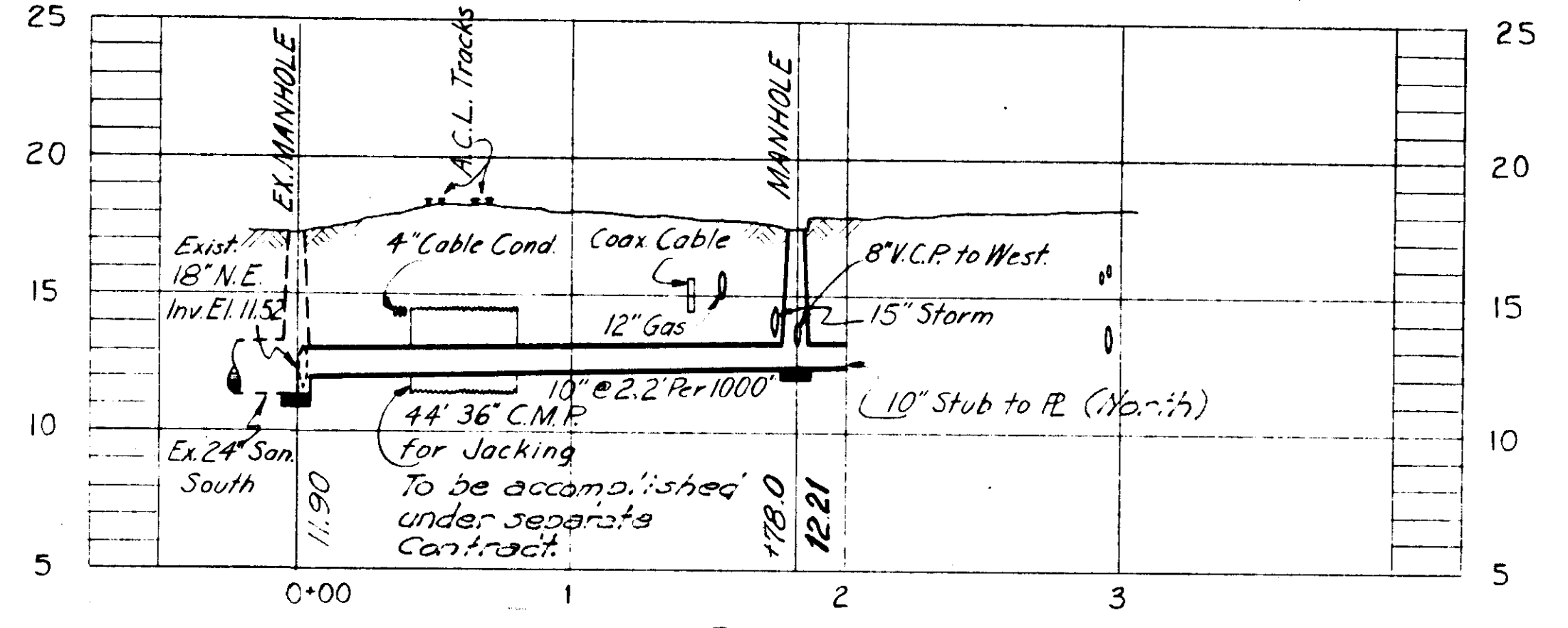


PROFILE - DX-2

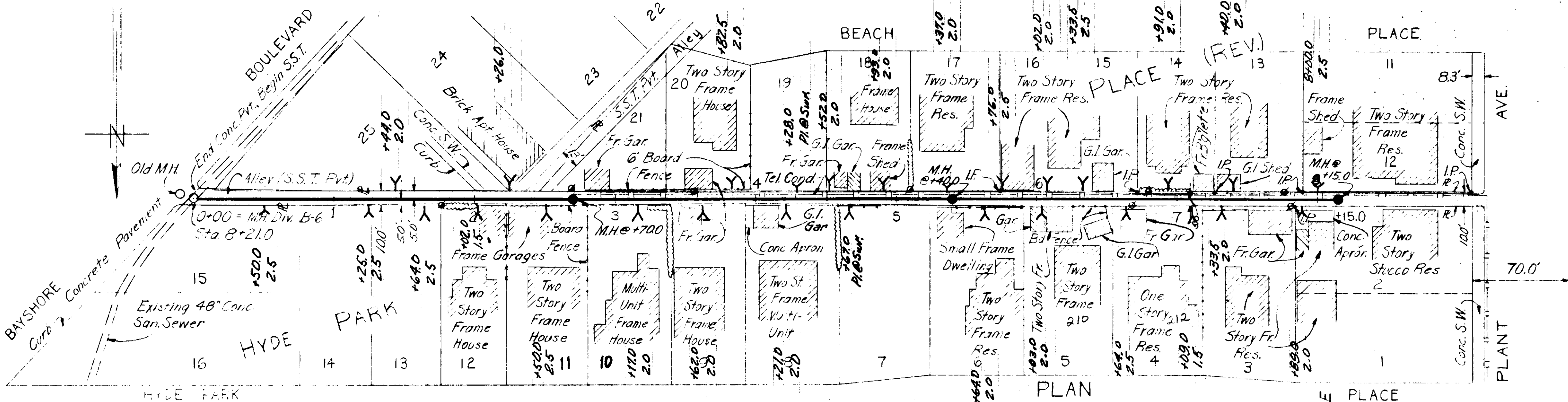


NOTE
Remove connection from existing 8" Industrial Waste Line (Conn. to Catch Basin) and re-connect to M.H. @ Sta. 1+82.0.

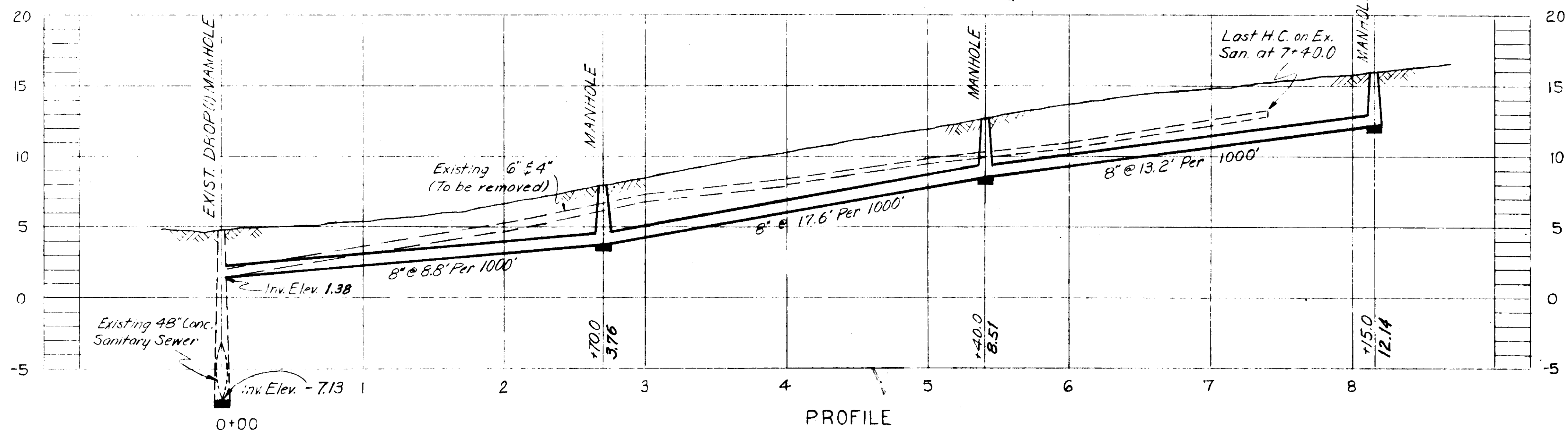
AS-BUILT PLAN
Revised to show actual conditions according to construction records as of: April 30, 1954.
Work Started: 4-15-54
Work Completed: 4-30-54
(A.D.C. - 3-17-55)



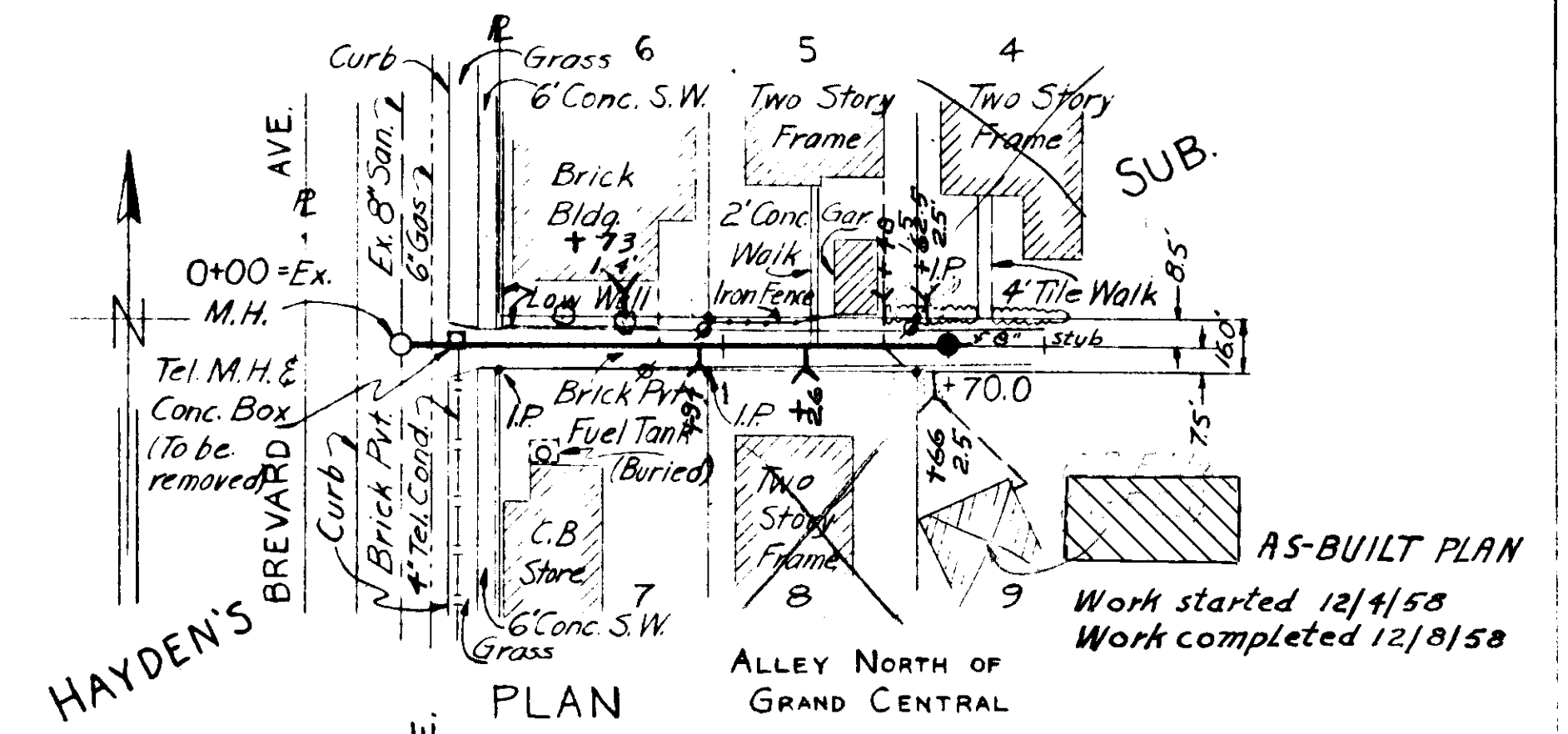
PROFILE MX-9



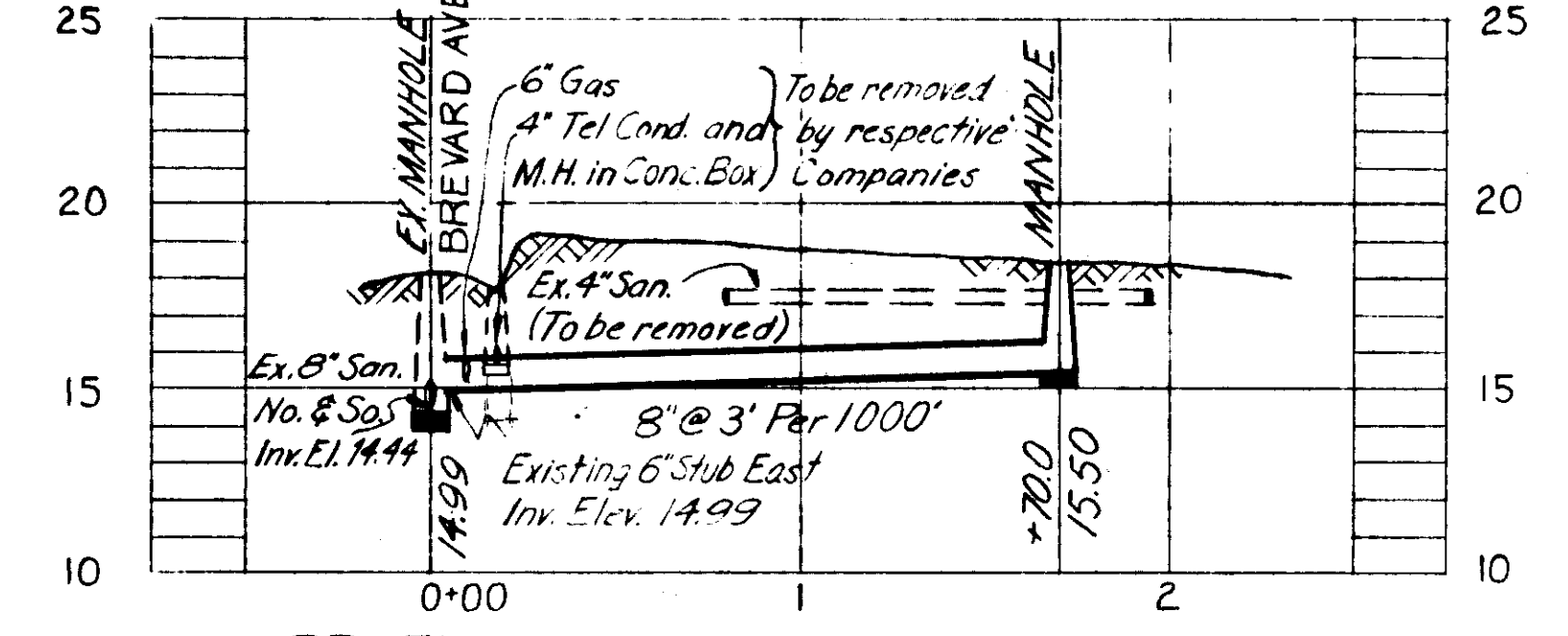
PLAN



PROFILE R-H-2



PLAN



PROFILE Wx-23

AS-BUILT PLAN (R-H-2)
Revised to show actual conditions according to construction records as of: 4-5-55.
Work Started: 2-28-55.
Work Completed: 4-5-55.
(A.D.C. 4-27-55)

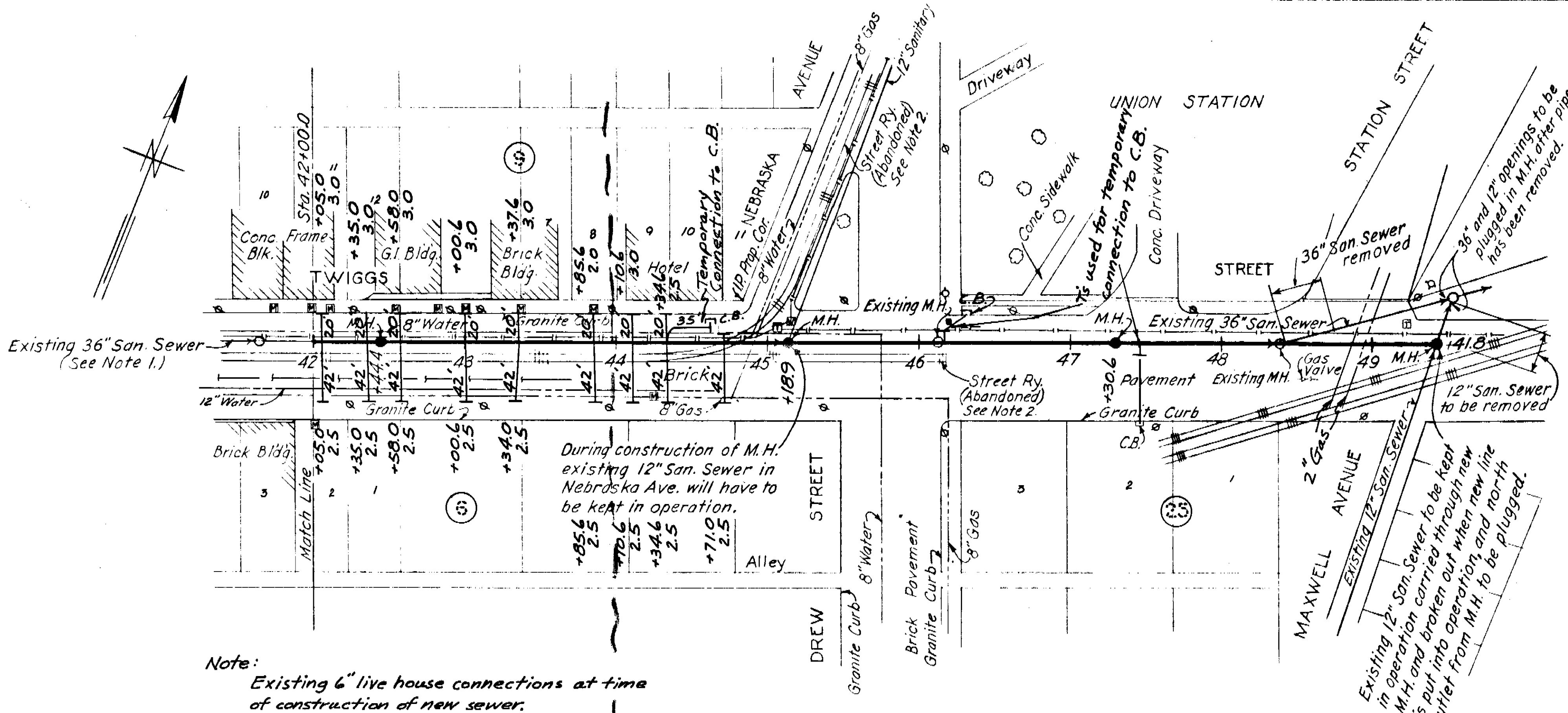
CITY OF TAMPA, FLORIDA
RENEWAL AND REPLACEMENT FUND
SEWER EXTENSIONS IN HYDE PARK & DOWNTOWN AREAS

Dx-2, Mx-9, R-H-2, & Wx-23

DEPT. OF PUBLIC WORKS
BUREAU OF SANITARY SEWERS

R & R FORCE ACCOUNT NO 2
SUBMITTED: *B. M. Annan*
BUREAU OF SANITARY SEWERS
APPROVED: *Ronald Newton 8-24-54*
Greeley and Hansen, Engineers

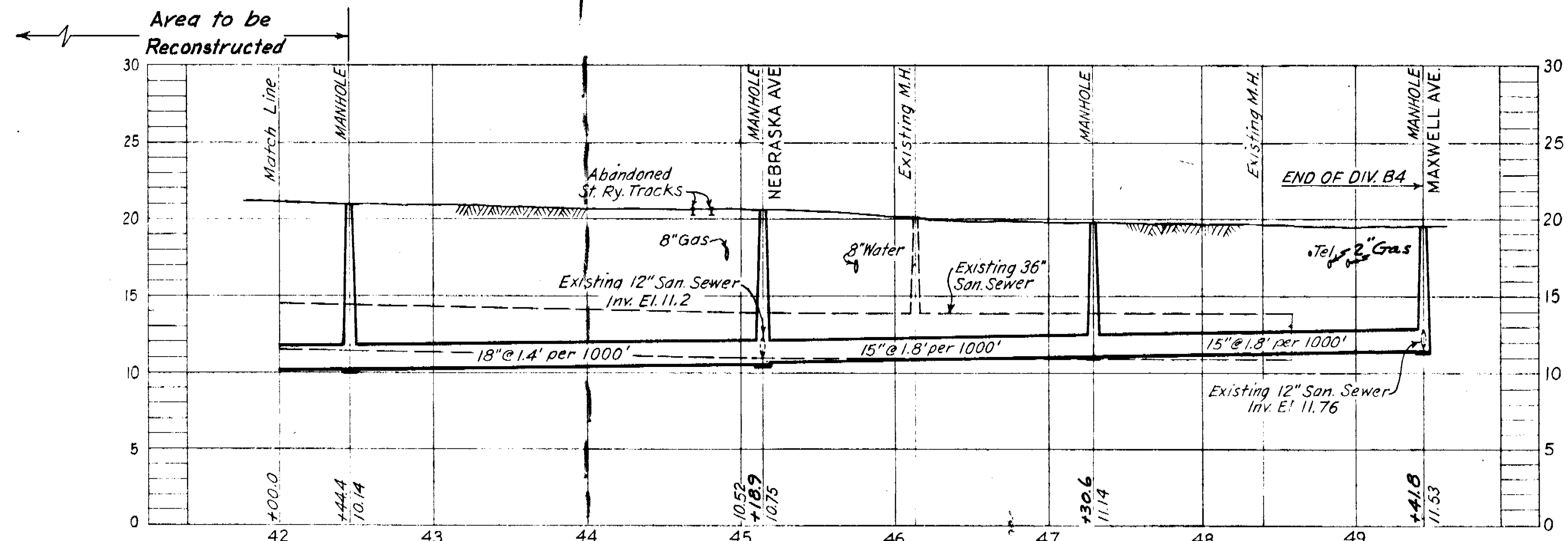
DES: ECA
DR: ADC
CKD: KED
DATE: JUNE 1954
SCALE: 1" = 50'
SHEET 1 OF 3



Note:
Existing 6" live house connections at time of construction of new sewer.

Address	Station	Direction
938-Twiggs St.	42+05.0	N
942-Twiggs St.	42+58.0	N
950-Twiggs St.	43+37.6	N
956-Twiggs St.	43+85.6	N
961-Twiggs St.	44+34.6	S

PLAN
Single Surface Treatment Pavement over main trench.
1" ckt-mix asphalt over house connection trenches.
Sta. 42+00.0 to Sta. 49+41.8



SEWER LINE LOCATION
SEC. MAP NO. | LINE NO.
1-12-49

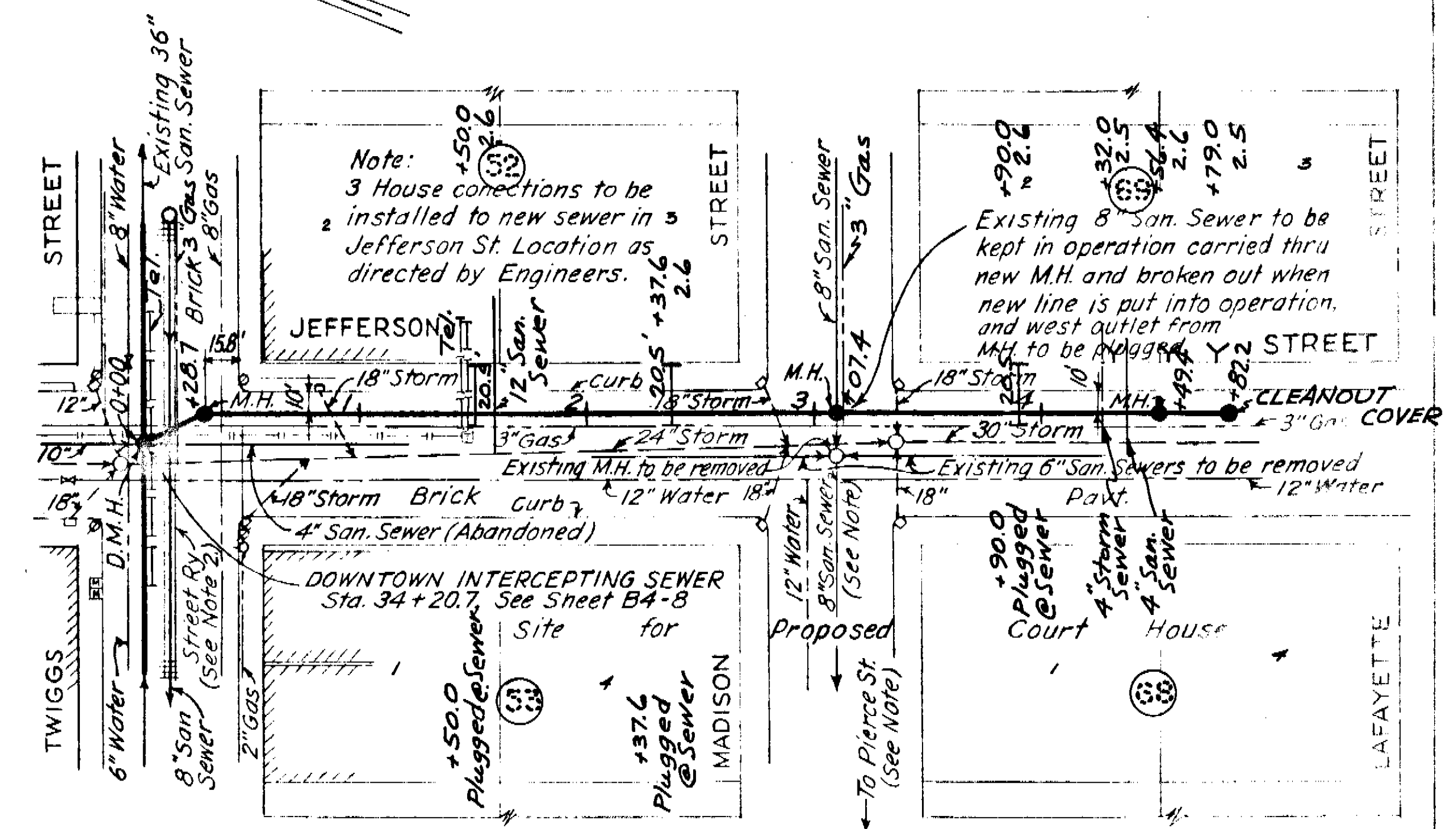
SEWER LINE LOCATION
SEC. MAP NO. | LINE NO.
1-13-29

PROFILE

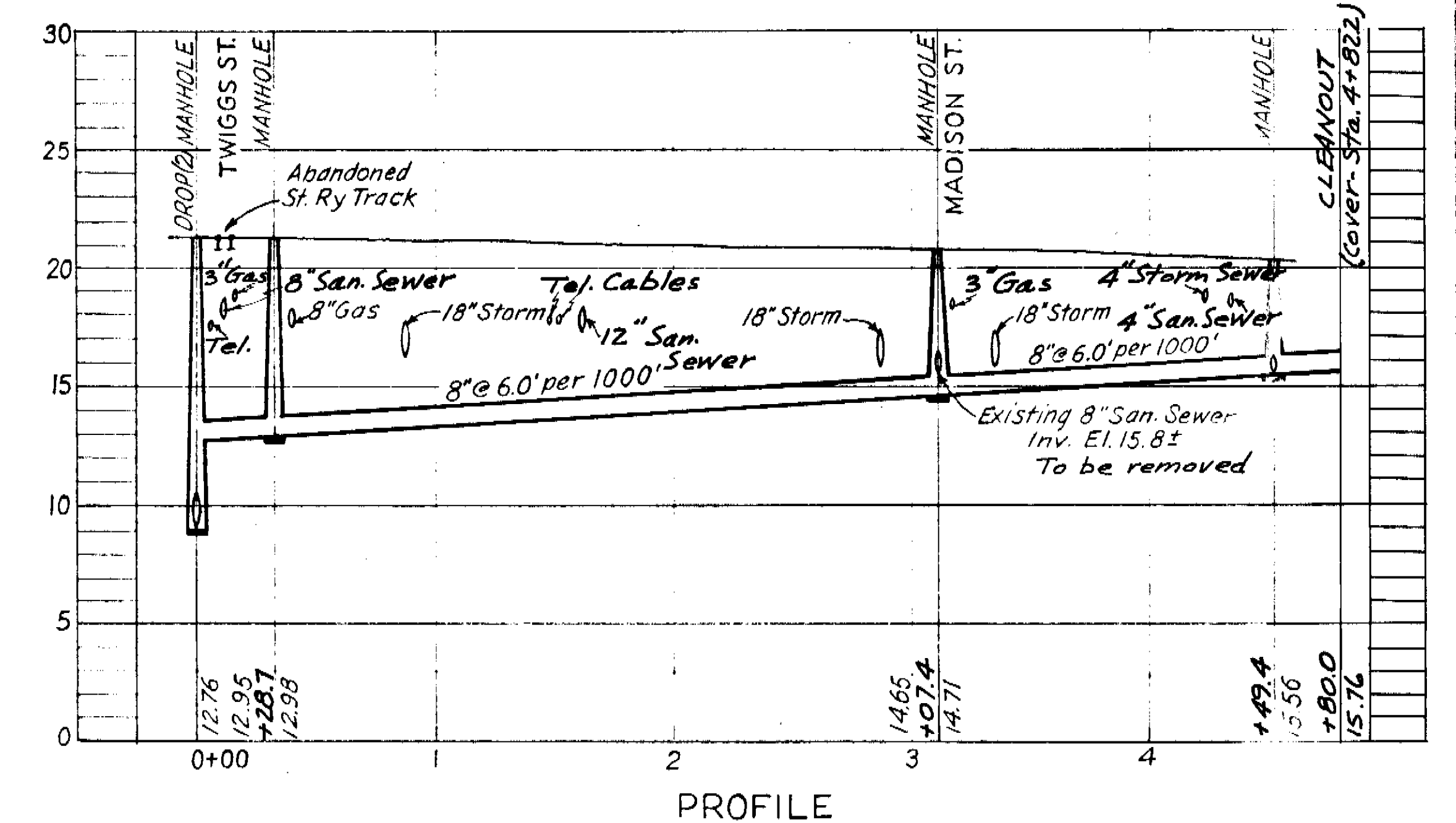
- NOTE:
- Existing 36" Seg. B1 San Sewer Twiggs St. to be removed and replaced by 18" and 15" V.C. San Sewer. Connections to the existing sewer to be reconnected to new sewer, and all existing manholes to be removed and new manholes to be built as shown.
 - Street Ry. tracks to be removed by Tampa Elec. Co.

Note:
Existing live house connections at time of construction of new sewer.

Address	Station	Direction
803-E. Madison St.	4+32.0	E
407-Jefferson St.	4+56.4	E
403-Jefferson St.	4+79.0	E



PLAN
Vitrified Brick Pavement
Sta. 0+00.0 to Sta. 4+83.7



SEWER LINE LOCATION
SEC. MAP NO. | LINE NO.
H-12-49

JEFFERSON ST. CONNECTING SEWER
Note: Existing 8" San Sewer in Madison St. to be removed from proposed M.H. at Sta 3+07.4 to west property line of Jefferson St. Also, from east property line of Pierce St. to Existing M.H. at Pierce St. and Madison St. not shown on this drawing.

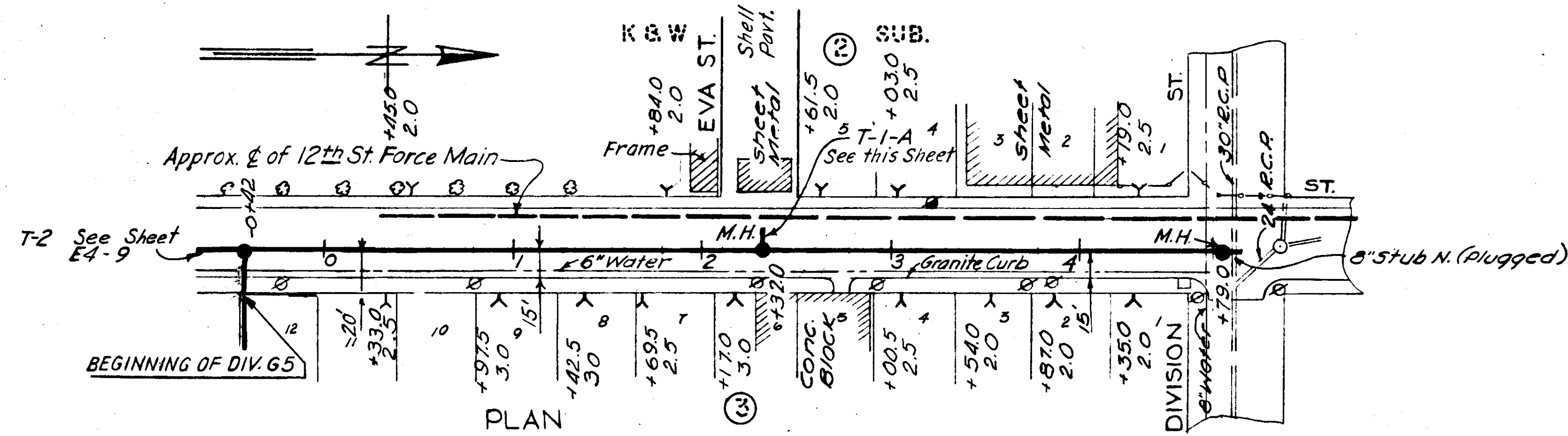
CITY OF TAMPA, FLORIDA
SEWAGE DISPOSAL SYSTEM
DIVISION B4
DOWNTOWN INTERCEPTING SEWER
STA. 42+00 TO STA. 49+41.8
AND
JEFFERSON ST. CONNECTING SEWER

GREELEY AND HANSEN
ENGINEERS
CHICAGO, ILL.

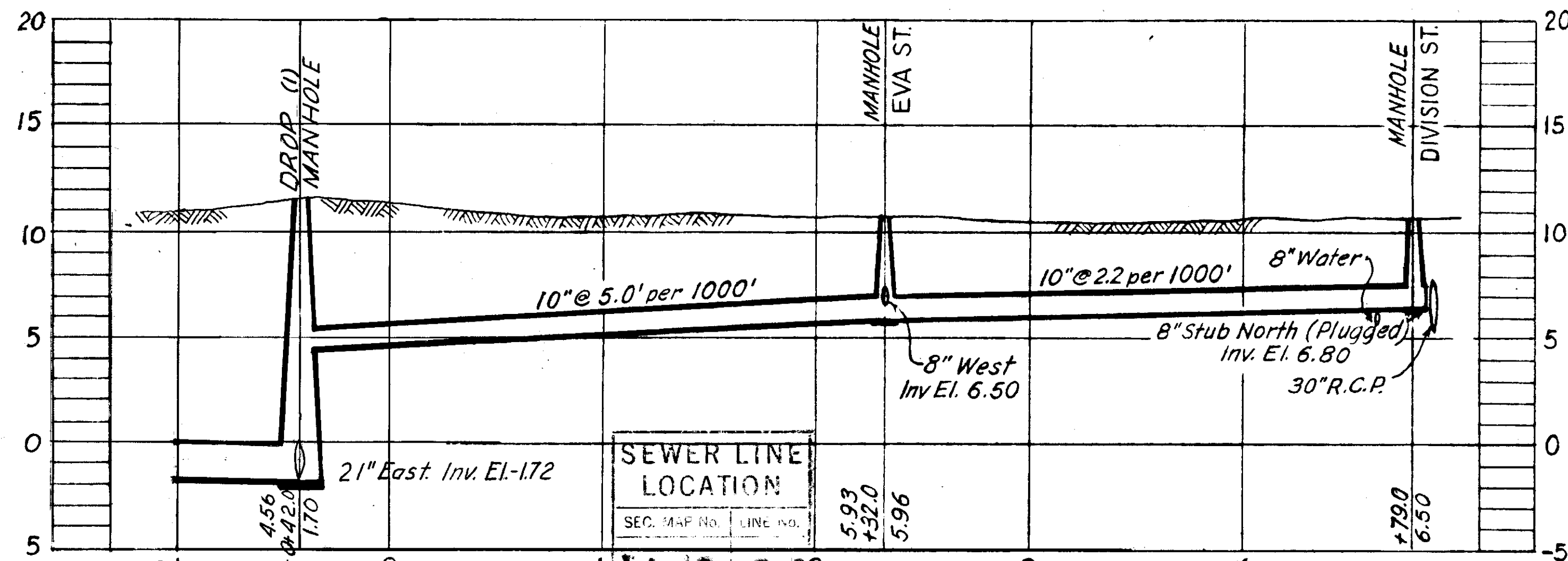
AS-BUILT PLAN
Revised to show actual conditions according to construction records as of 10-31-51
(J.J.S. 12-4-51)

DES. BY S. DR. J.W.H.
CHKD. BY S. DATE
SCALE
50 0 50 100 1"=50'
SHEET
B4-9
OF 13

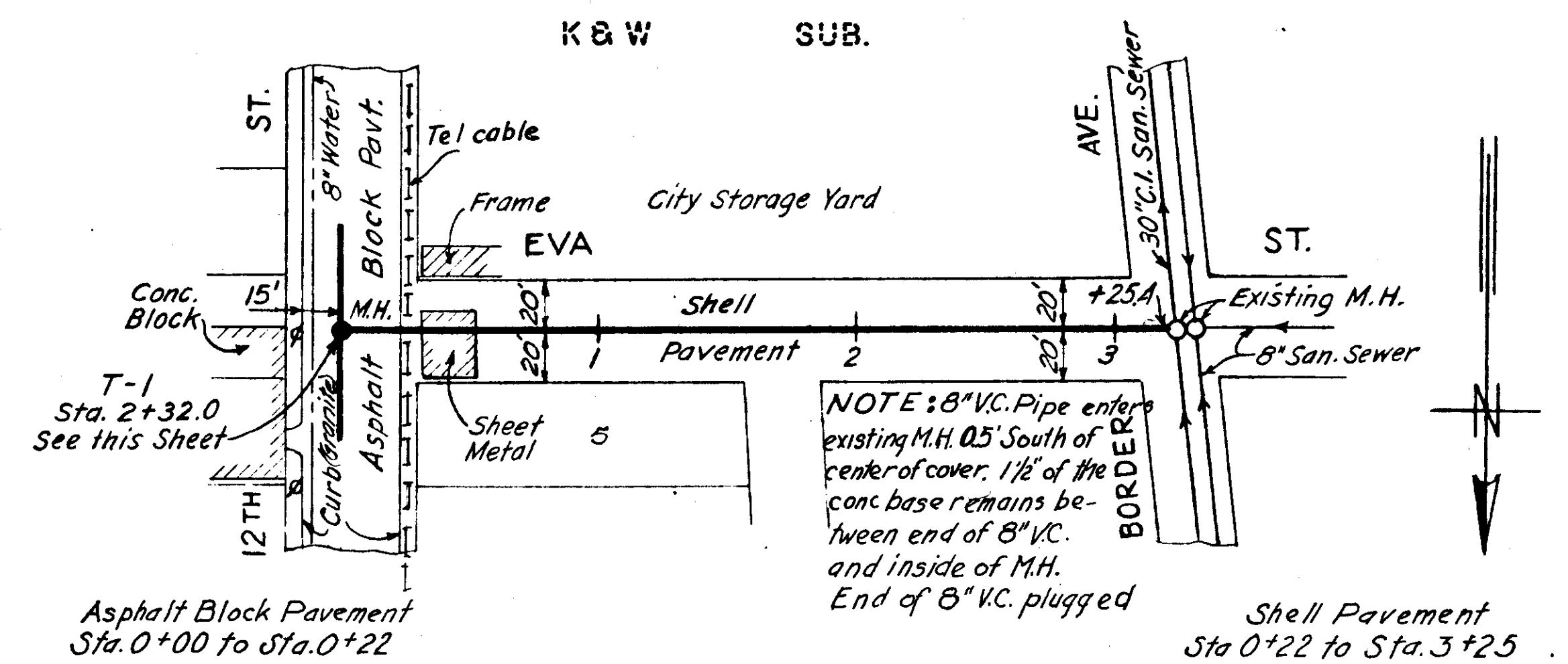
38-10



Asphalt Block Pavement
Sta. 0+00 to Sta. 4+79.0

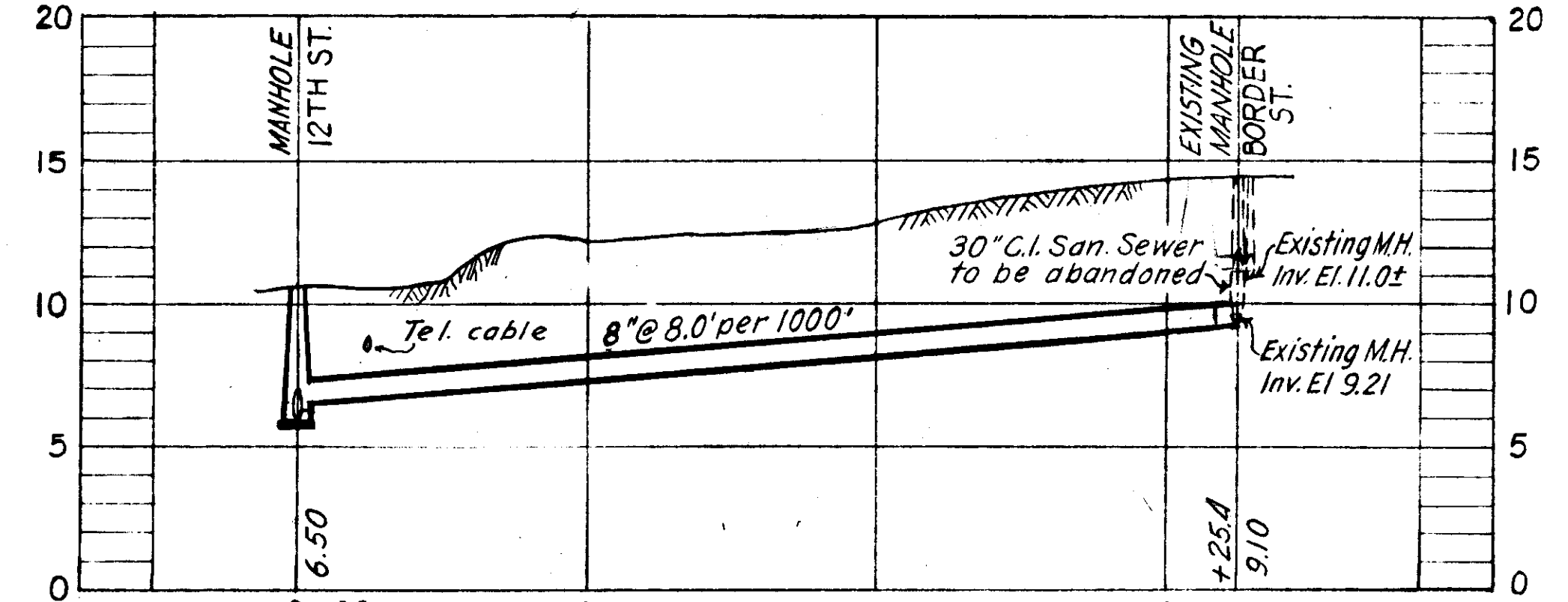


PROFILE
T-1-A



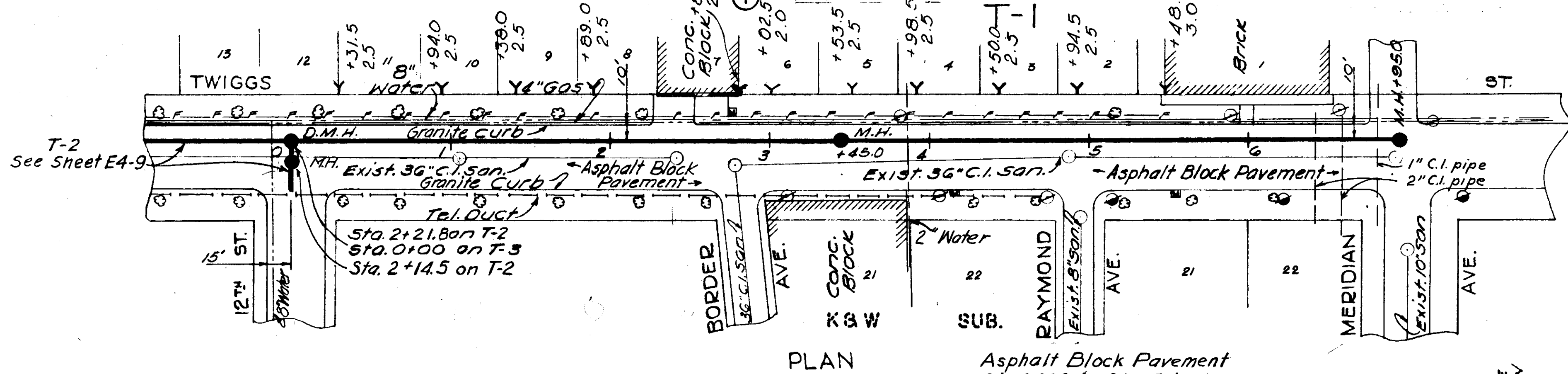
Asphalt Block Pavement
Sta. 0+00 to Sta. 0+22

Shell Pavement
Sta. 0+22 to Sta. 3+25

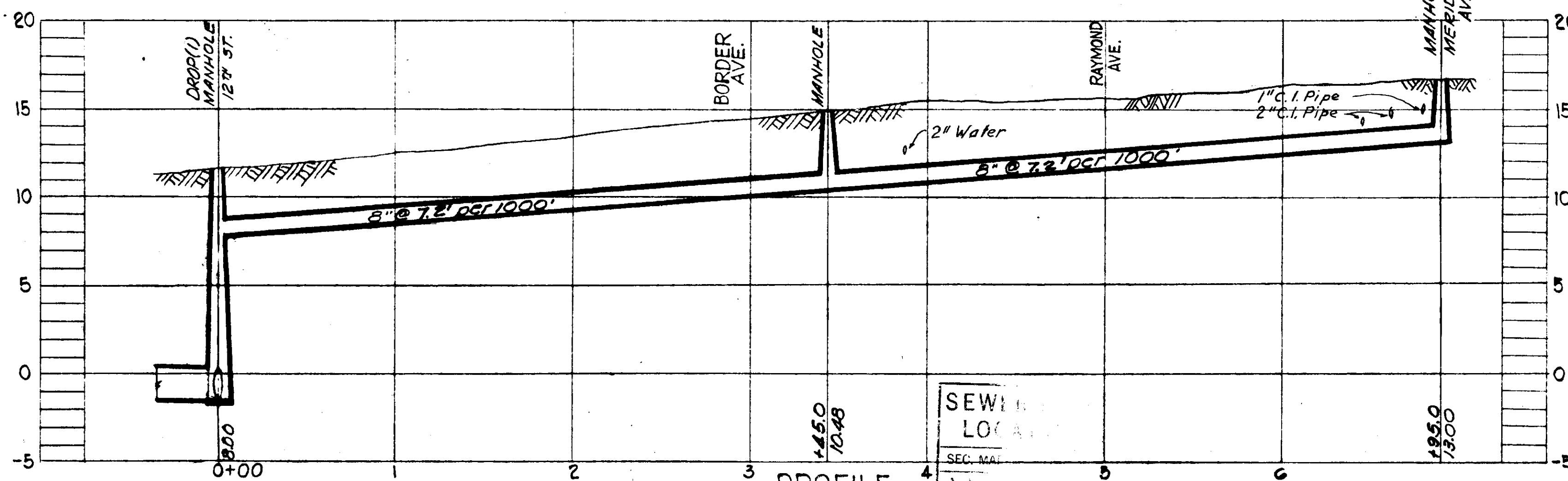


PROFILE
T-1

SEWER LINE LOCATION	
SEC. MAP NO.	LINE NO.
H-13-29	



Asphalt Block Pavement
Sta. 0+00 to Sta. 7+00



PROFILE
T-3

SEWER LINE LOCATION	
SEC. MAP NO.	LINE NO.
H-13-30	

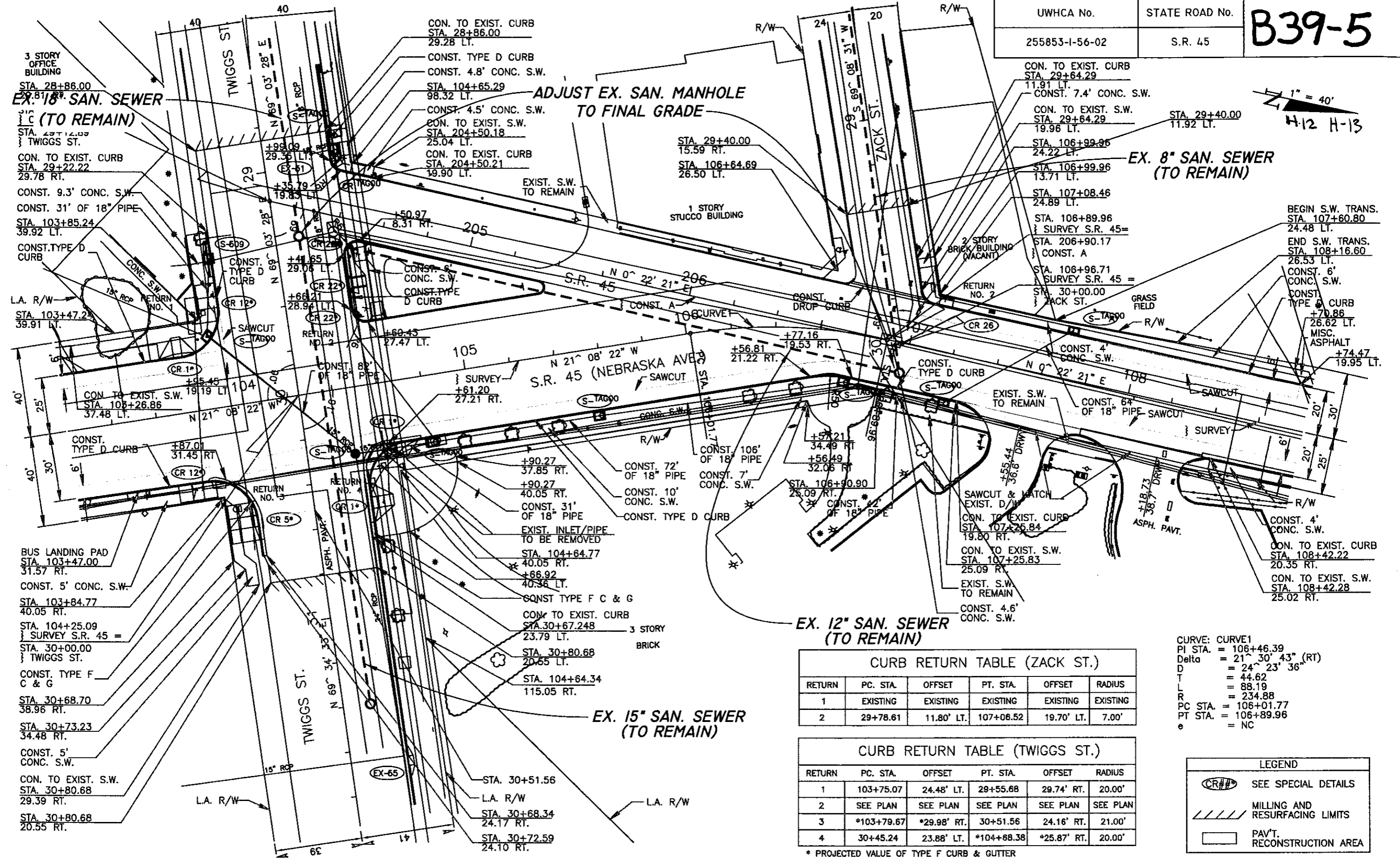
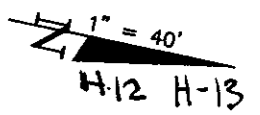
CITY OF TAMPA, FLORIDA.
SEWER IMPROVEMENTS.
DIVISION E4.

T-1, T-1-A & T-3

AS-BUILT PLAN
Revised to show actual conditions according
to construction records as of Oct. 13, 1950
(G.L.L. 6-8-51)

DES. W.W.S. DR. R.E.H. C.D. R.E.H. DATE: JUNE 1949	SCALE 1" = 50'	SHEET E4-8 OF 19
--	-------------------	------------------------

45-23



CURB RETURN TABLE (ZACK ST.)

RETURN	PC. STA.	OFFSET	PT. STA.	OFFSET	RADIUS
1	EXISTING	EXISTING	EXISTING	EXISTING	EXISTING
2	29+78.61	11.80' LT.	107+06.52	19.70' LT.	7.00'

CURB RETURN TABLE (TWIGGS ST.)

RETURN	PC. STA.	OFFSET	PT. STA.	OFFSET	RADIUS
1	103+75.07	24.48' LT.	29+55.68	29.74' RT.	20.00'
2	SEE PLAN	SEE PLAN	SEE PLAN	SEE PLAN	SEE PLAN
3	*103+79.67	*29.98' RT.	30+51.56	24.16' RT.	21.00'
4	30+45.24	23.88' LT.	*104+68.38	*25.87' RT.	20.00'

CURVE: CURVE1
 PI STA. = 106+46.39
 Delta = 21° 30' 43" (RT)
 D = 24° 23' 36"
 T = 44.62
 L = 88.19
 R = 234.88
 PC STA. = 106+01.77
 PT STA. = 106+89.96
 e = NC

LEGEND

	SEE SPECIAL DETAILS
	MILLING AND RESURFACING LIMITS
	PAV'T. RECONSTRUCTION AREA

* PROJECTED VALUE OF TYPE F CURB & GUTTER

No.	DATE	REVISIONS	No.	DATE	REVISIONS
3			6		
2			5		
1			4		

DES: J.T.
 DRN: BB
 CKD:
 DATE:

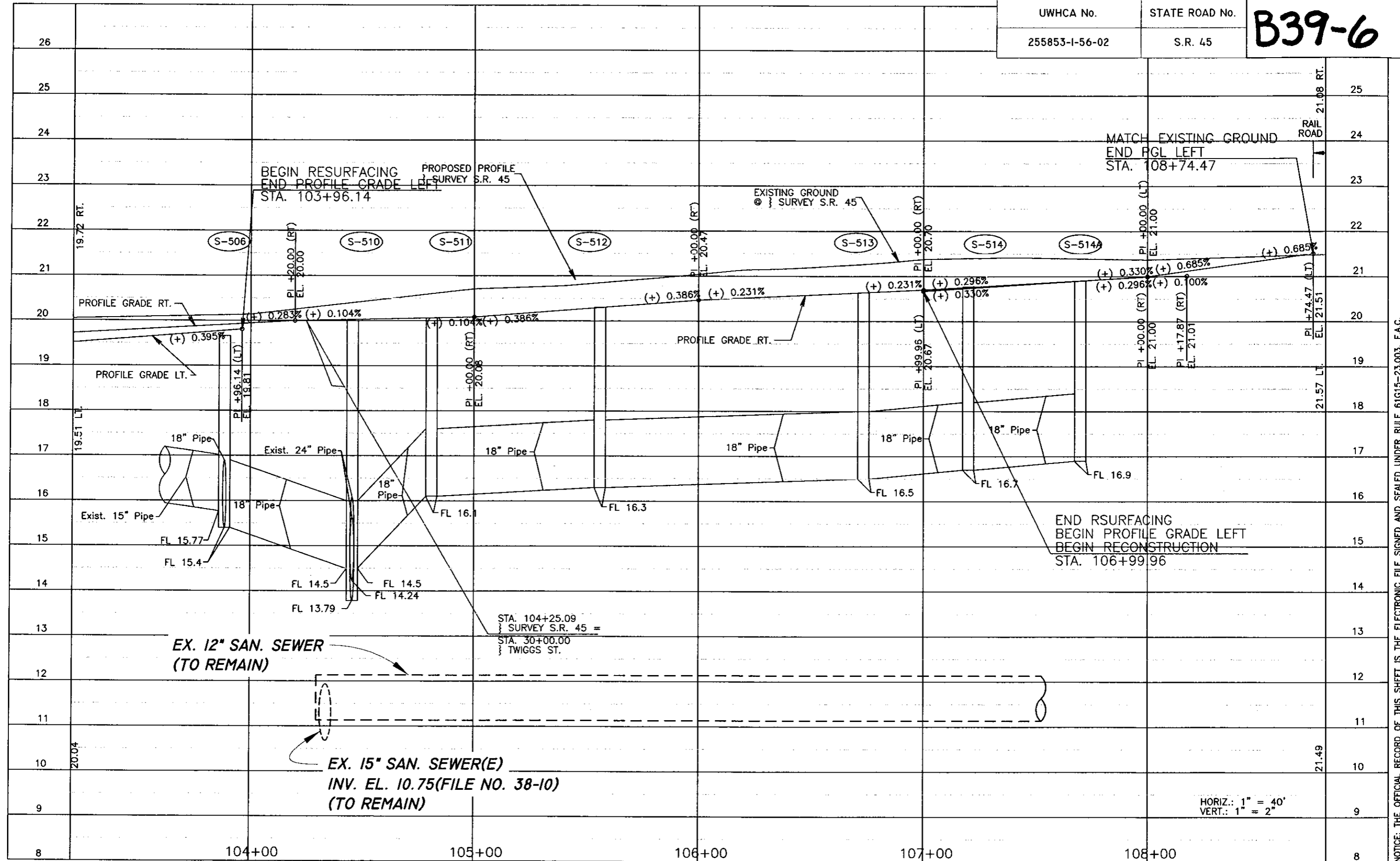
CITY of TAMPA
WASTEWATER DEPARTMENT

WASTEWATER UTILITY ADJUSTMENTS
 NEBRASKA AVE.: KENNEDY BLVD. TO HILLSBOROUGH AVE.
 STA 103+20 TO STA 108+80

SHEET
U-9
 OF 71

C:\PROGFILES\LAND2004\DWG\FDOT\JPA\5492-U-09.DWG 1=40

NOTICE: THE OFFICIAL RECORD OF THIS PLAN SHEET IS THE ELECTRONIC FILE SIGNED AND SEALED UNDER RULE 61C15-23.003, F.A.C.



C:\PROFILES\LAND2004\DWG\FDOT\U-10.DWG 1=40

NOTICE: THE OFFICIAL RECORD OF THIS SHEET IS THE ELECTRONIC FILE SIGNED AND SEALED UNDER RULE 61G15-23.003, F.A.C.

No.	DATE	REVISIONS	No.	DATE	REVISIONS
3			6		
2			5		
1			4		

DES: J.T.	CITY of TAMPA WASTEWATER DEPARTMENT	WASTEWATER UTILITY ADJUSTMENTS NEBRASKA AVE.: KENNEDY BLVD. TO HILLSBOROUGH AVE. STA 103+200 TO STA 108+80	SHEET
DRN: BB			U-10 OF 71
CKD:			
DATE:			

HORIZ.: 1" = 40'
VERT.: 1" = 2'