

NOTES:

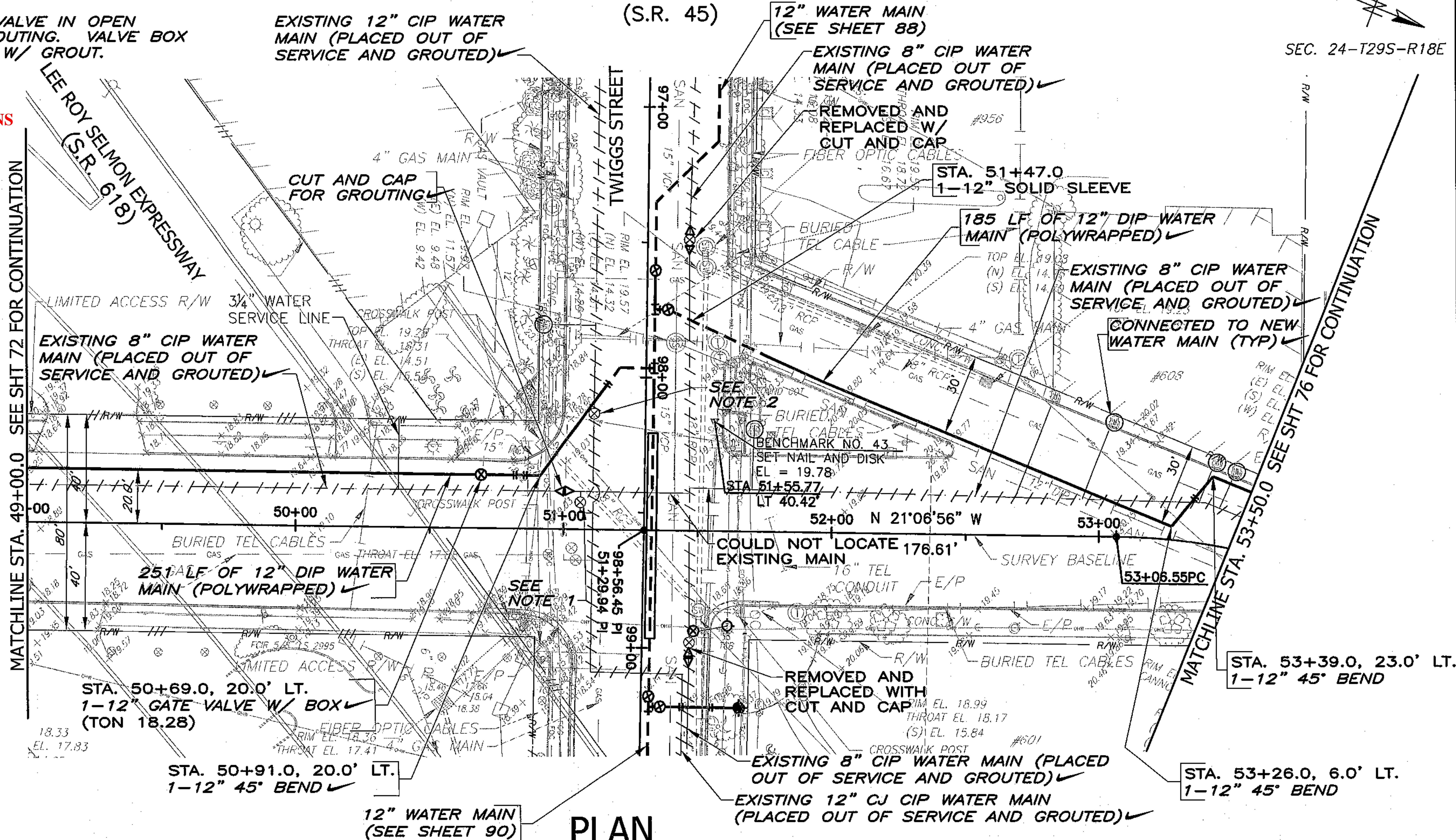
1. INDICATED VALVE BOXES SHALL BE REMOVED.
2. LEAVE INDICATED VALVE IN OPEN POSITION FOR GROUTING. VALVE BOX TO REMAIN. FILL W/ GROUT.

DRAWING ACCURACY WAS NOT VERIFIED. FIELD VERIFY LOCATIONS AND DEPTHS.

NEBRASKA AVENUE

(S.R. 45)

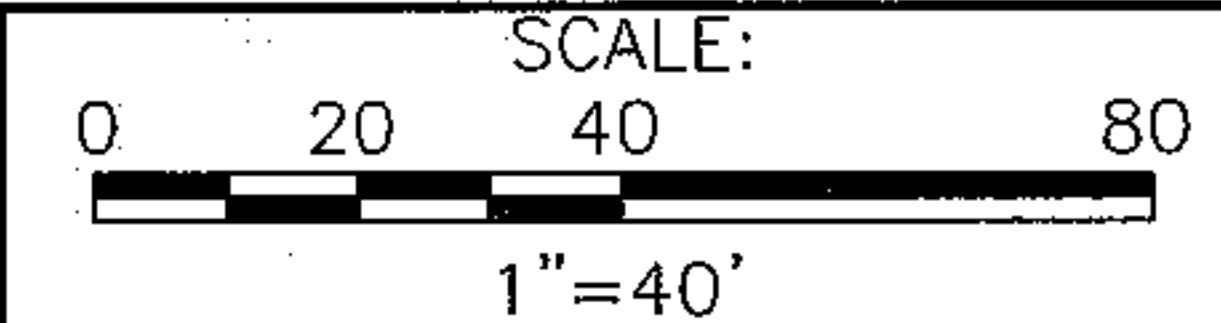
SEC. 24-T29S-R18E



PLAN

RECORD DRAWING LEGEND

- ✓ SIGNIFIES COMPLETION AS DESIGNED
- STA. 12+19.1, 7.5' RT. AS-BUILT INFORMATION (TEXT NOT SLANTED)
- +++++ PIPE PLACED OUT OF SERVICE



DESIGNED NAM, ML
 DRAWN GAG
 CHECKED TYW

| NO. | DATE | APPD | REVISION |
|-----------------------------|-------|----------------|--------------------------|
| 3 | 07/11 | TYW | RECORD DRAWING REVISIONS |
| P.E. NAME: THOMAS Y. WILSON | | P.E. NO. 40284 | |
| P.E. NAME: | | | |
| DATE: | | | |

RECORD DRAWING

THIS RECORD DRAWING IS NOT WARRANTED BUT IS BELIEVED TO REPRESENT CONDITIONS UPON COMPLETION OF CONSTRUCTION WITHIN REASONABLE TOLERANCES, BASED UPON THE INFORMATION FURNISHED TO THE ENGINEER FROM THE CONTRACTOR PERTAINING TO CHANGES MADE DURING CONSTRUCTION. STRIKE THROUGH OF THE ORIGINAL DESIGN/CALL-OUTS WERE NOT USED. SEE RECORD DRAWING LEGEND ON THIS SHEET.

CITY OF TAMPA WATER DEPARTMENT
 2008 WATER MAIN IMPROVEMENTS - DOWNTOWN PHASE C
 PLAN
 NEBRASKA AVENUE
 STA. 49+00.0 TO STA. 53+50.0



W.O. NO. 7042
 FILE: DTCTESH04
 NO. **74** OF 134
 DATE JULY 2011

FCB4-435

SHT 74, 7/14/2011 3:53:48 PM