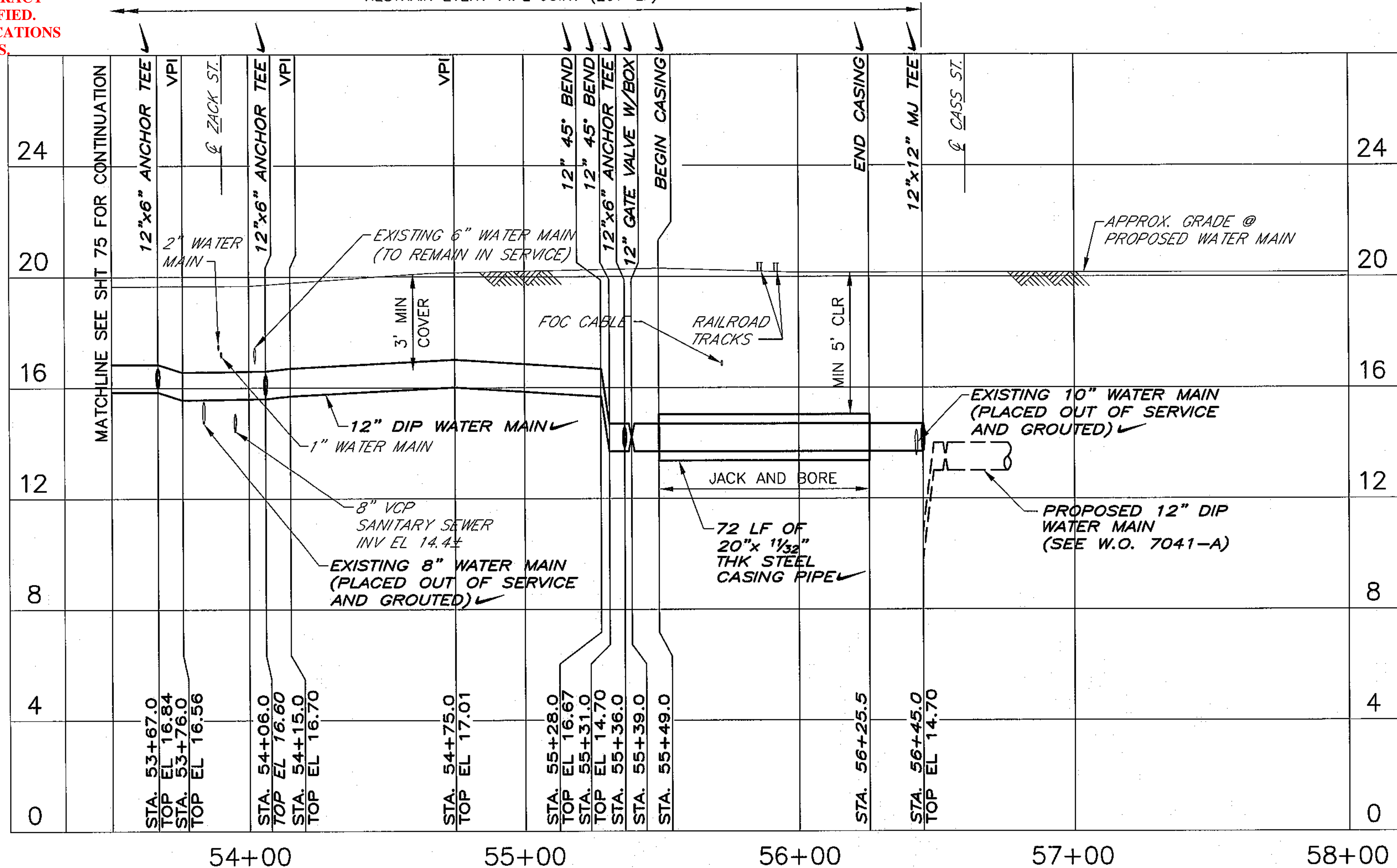


**DRAWING ACCURACY
WAS NOT VERIFIED.
FIELD VERIFY LOCATIONS
AND DEPTHS.**

RESTRAIN EVERY PIPE JOINT (297 LF)



PROFILE

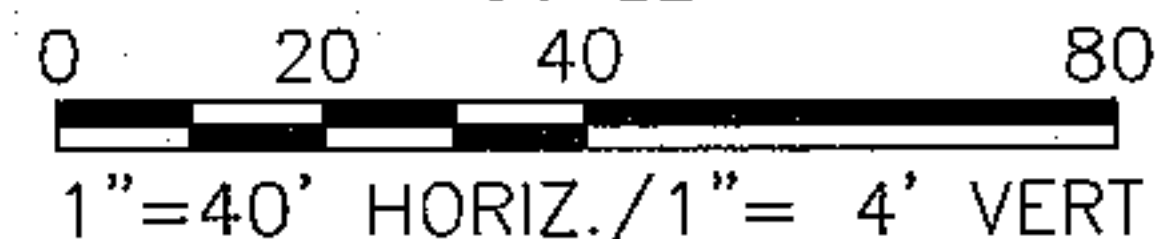
RECORD DRAWING

THIS RECORD DRAWING IS NOT WARRANTED BUT IS BELIEVED TO REPRESENT CONDITIONS UPON COMPLETION OF CONSTRUCTION WITHIN REASONABLE TOLERANCES, BASED UPON THE INFORMATION FURNISHED TO THE ENGINEER FROM THE CONTRACTOR PERTAINING TO CHANGES MADE DURING CONSTRUCTION. STRIKE THROUGH OF THE ORIGINAL DESIGN/CALL-OUTS WERE NOT USED. SEE RECORD DRAWING LEGEND ON THIS SHEET.

RECORD DRAWING LEGEND

✓ SIGNIFIES COMPLETION AS DESIGNED
 STA. 12+19.1, 7.5' RT. AS-BUILT INFORMATION (TEXT NOT SLANTED)

SCALE:



DESIGNED NAM, ML
 DRAWN GAG
 CHECKED TYW

NO.	DATE	APPD	REVISION
1	07/11	TYW	RECORD DRAWING REVISIONS

P.E. NAME: THOMAS Y. WILSON P.E. NO. 40284
 P.E. NAME: _____
 DATE: _____

CITY OF TAMPA WATER DEPARTMENT
 2008 WATER MAIN IMPROVEMENTS - DOWNTOWN PHASE C

PROFILE
 NEBRASKA AVENUE

STA. 53+50.0 TO STA. 56+45.0



W.O. NO. 7042

FILE: DTCTESH05

NO. 77 OF 134

DATE JULY 2011

FC84-438

SHT 77, 7/14/2011 3:57:19 PM



1715 N. WESTSHORE BLVD., STE. 464
 TAMPA, FLORIDA 33607
 CERTIFICATE OF AUTHORIZATION NO. 37