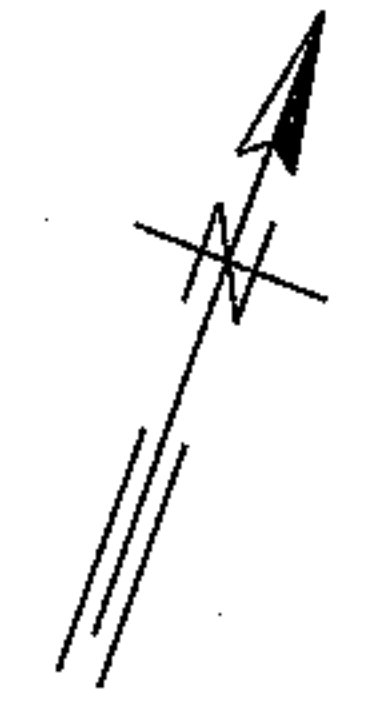


TWIGGS STREET

DRAWING ACCURACY
WAS NOT VERIFIED.
FIELD VERIFY LOCATIONS
AND DEPTHS.



SEC. 19-T29S-R18E

EXISTING F.H. REMOVED.
CLOSE VALVE PRIOR TO
GROUTING MAIN.
VALVE BOX TO REMAIN,
FILL WITH GROUT

CUT AND CAP
FOR GROUTING

STA. 99+23.0, 37.0' LT.
1-12"x6" ANCHOR TEE ✓
1-6" GATE VALVE W/BOX ✓
(TON 14.86)
2-6" 45° BENDS
ADDITIONAL 24 LF OF 6"
DIP WATER MAIN (POLYWRAPPED) R/W
1-5/8" DNS FIRE HYDRANT
METHOD 1

EXISTING 12" CIP WATER
MAIN (PLACED OUT OF
SERVICE AND GROUTED) ✓

EXISTING 8" CIP
WATER MAIN
(PLACED OUT OF
SERVICE
AND GROUTED) ✓

450 LF OF 12"
DIP WATER MAIN
(POLYWRAPPED) ✓

CONNECTED TO
NEW WATER MAIN ✓

EXISTING F.H.
AND VALVE BOX
(REMOVED) ✓

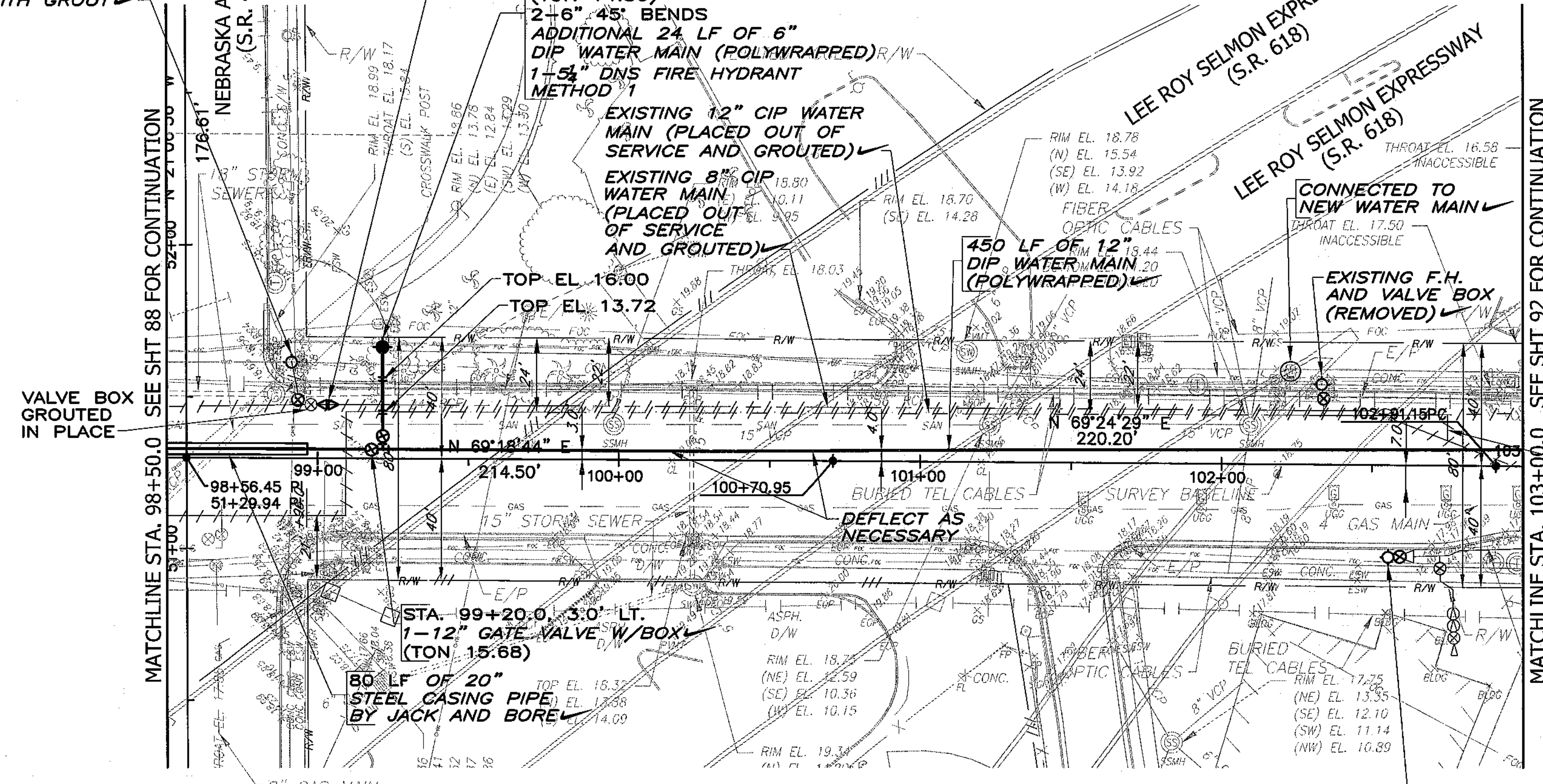
EXISTING 6"
WATER MAIN

EXISTING F.H.
AND VALVE BOX
(TO REMAIN)

VALVE BOX
GROUTED
IN PLACE

MATCHLINE STA. 98+50.0 SEE SHT 88 FOR CONTINUATION

MATCHLINE STA. 103+00.0 SEE SHT 92 FOR CONTINUATION



RECORD DRAWING LEGEND

- ✓ SIGNIFIES COMPLETION AS DESIGNED
- STA. 12+19.1, 7.5' RT. AS-BUILT INFORMATION (TEXT NOT SLANTED)
- +++++ PIPE PLACED OUT OF SERVICE

PLAN

RECORD DRAWING

THIS RECORD DRAWING IS NOT WARRANTED BUT IS BELIEVED TO REPRESENT CONDITIONS UPON COMPLETION OF CONSTRUCTION WITHIN REASONABLE TOLERANCES, BASED UPON THE INFORMATION FURNISHED TO THE ENGINEER FROM THE CONTRACTOR PERTAINING TO CHANGES MADE DURING CONSTRUCTION. STRIKE THROUGHS OF THE ORIGINAL DESIGN/CALL-OUTS WERE NOT USED. SEE RECORD DRAWING LEGEND ON THIS SHEET.



GREELEY AND HANSEN
1715 N. WESTSHORE BLVD., STE. 464
TAMPA, FLORIDA 33607
CERTIFICATE OF AUTHORIZATION NO. 37

SCALE: 1"=40'

DESIGNED	NAM, ML
DRAWN	GAG
CHECKED	TYW

NO.	DATE	APPD.	REVISION
07/11	TYW		RECORD DRAWING REVISION
P.E. NAME: THOMAS Y. WILSON		P.E. NO. 40284	
P.E. NAME:		DATE:	

CITY OF TAMPA WATER DEPARTMENT
2008 WATER MAIN IMPROVEMENTS - DOWNTOWN PHASE C
PLAN
TWIGGS STREET
STA. 98+50.0 TO STA. 103+00.0

W.O. NO. 7042
FILE: DTCTESH04E
NO. 90 OF 134
DATE JULY 2011

FC84-452

SHT 90, 7/21/2011 9:08:40 AM