

CONTRACT PLANS COMPONENTS

ROADWAY PLANS

TAMPA HILLSBOROUGH
EXPRESSWAY AUTHORITY

CONTRACT PLANS

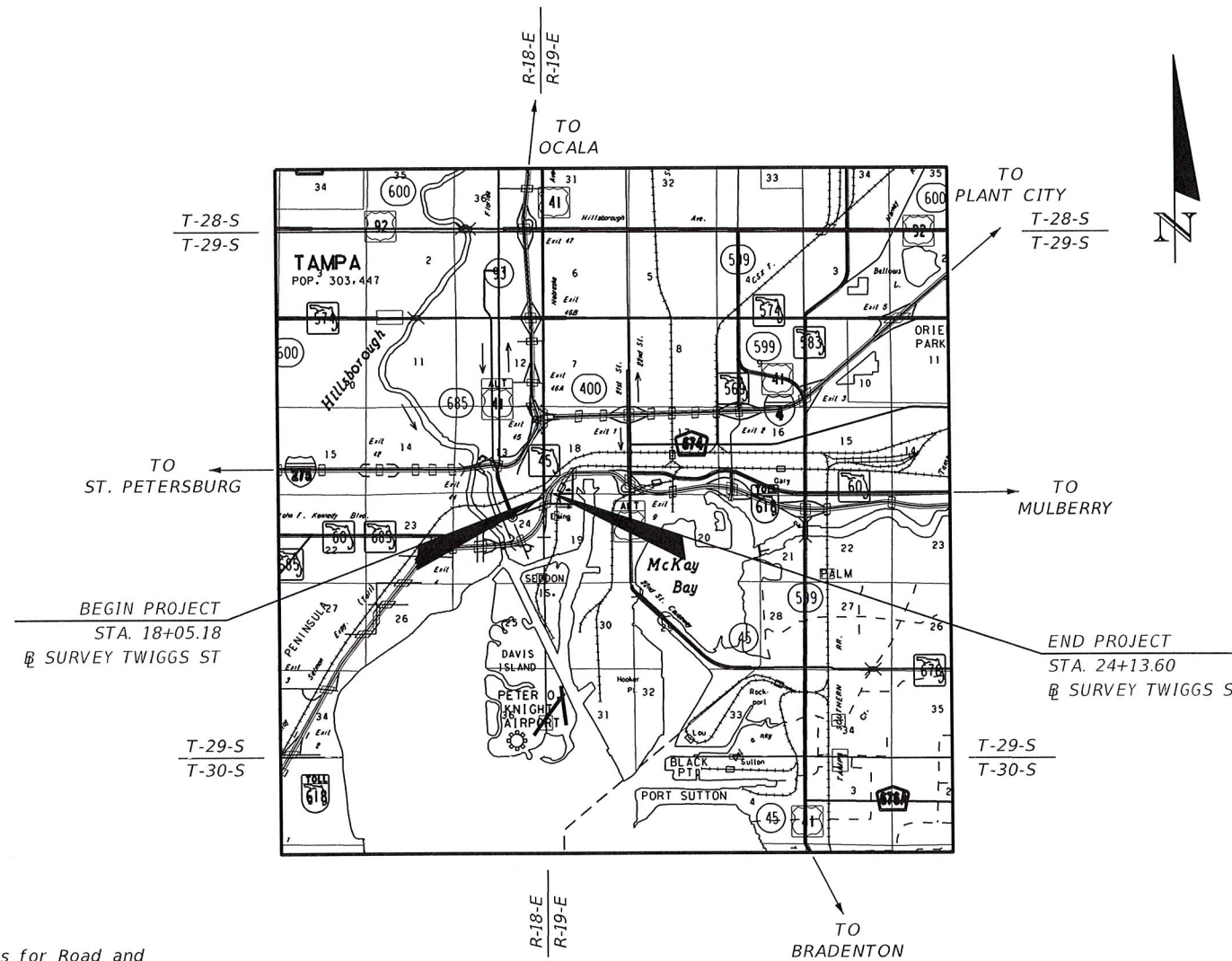
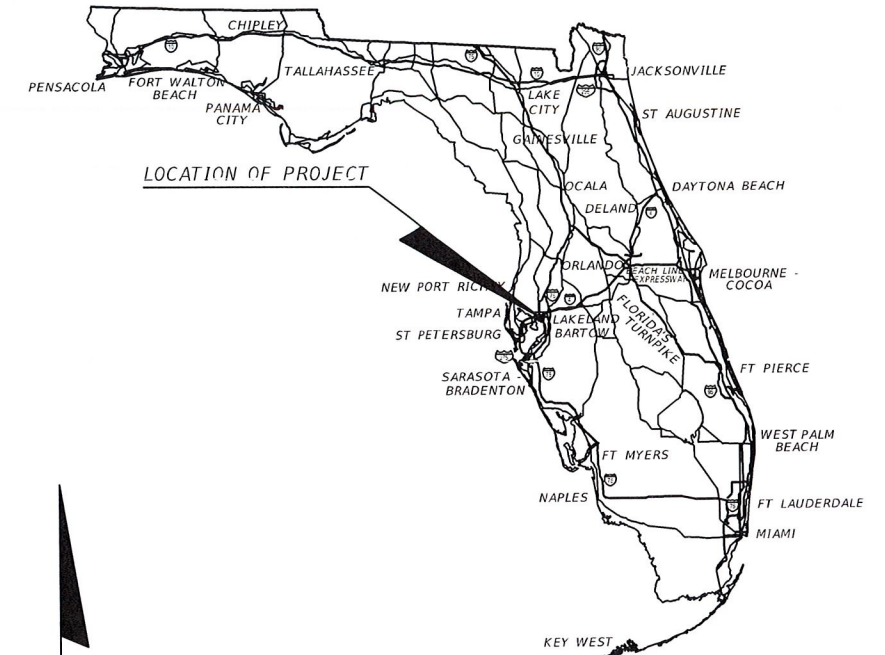
PROJECT ID: O-00918

HILLSBOROUGH COUNTY (10002)

E. TWIGGS STREET

INDEX OF ROADWAY PLANS

| SHEET NO. | SHEET DESCRIPTION |
|-----------|---------------------|
| 1 | KEY SHEET |
| 2 | TYPICAL SECTION |
| 3 - 4 | PLAN |
| 5 - 6 | UTILITY ADJUSTMENTS |



GOVERNING STANDARD PLANS:

Florida Department of Transportation, FY2018/19 Standard Plans for Road and Bridge Construction and applicable Interim Revisions (IRs).

Standard Plans for Road Construction and associated IRs are available at the following website: <http://www.fdot.gov/design/standardplans>

GOVERNING STANDARD SPECIFICATIONS:

Florida Department of Transportation, July 2018 Standard Specifications for Road and Bridge Construction at the following website: <http://www.fdot.gov/programmanagement/Implemented/SpecBooks>

ROADWAY PLANS

ENGINEER OF RECORD:

DOUGLAS J. BURKHART, P.E. NO.: 40900
HNTB CORPORATION
201 N. FRANKLIN STREET, SUITE 1200
TAMPA, FL 33602
(813) 402-4150
CONTRACT NO.: O-00918
VENDOR NO.: VF 43-1623092
CERTIFICATE OF AUTHORIZATION NO.: 6500

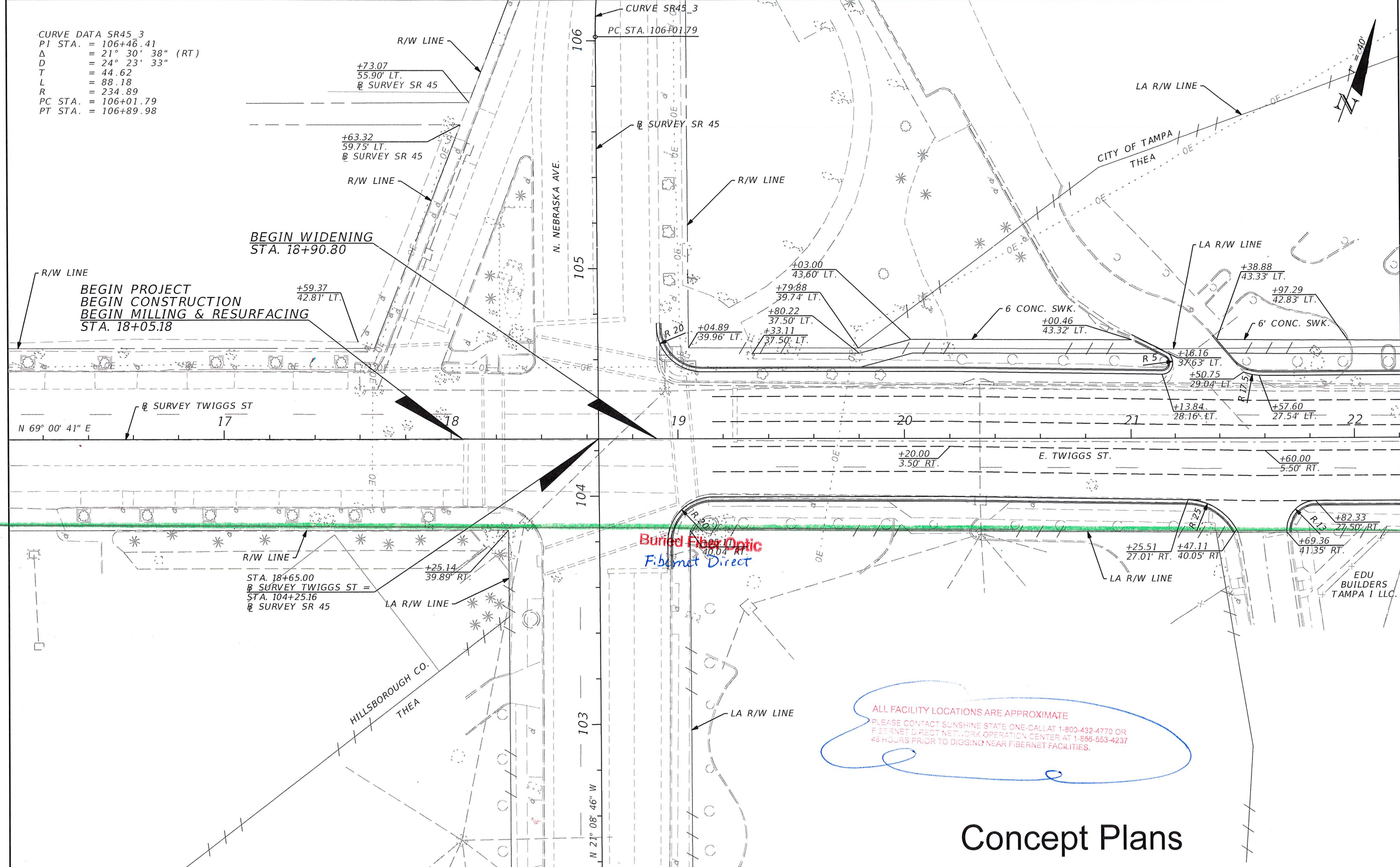
THEA PROJECT MANAGER:

DAVID MAY, P.E.

Concept Plans

| CONSTRUCTION CONTRACT NO. | FISCAL YEAR | SHEET NO. |
|---------------------------|-------------|-----------|
| | | |

CURVE DATA SR45_3
 PI STA. = 106+46.41
 Δ = 21° 30' 38" (RT)
 D = 24° 23' 33"
 T = 44.62
 L = 88.18
 R = 234.89
 PC STA. = 106+01.79
 PT STA. = 106+89.98



ALL FACILITY LOCATIONS ARE APPROXIMATE
 PLEASE CONTACT SUNSHINE STATE ONE-CALL AT 1-800-432-4770 OR
 FIBERNET DIRECT NETWORK OPERATION CENTER AT 1-888-553-4237
 48 HOURS PRIOR TO DIGGING NEAR FIBERNET FACILITIES.

Concept Plans

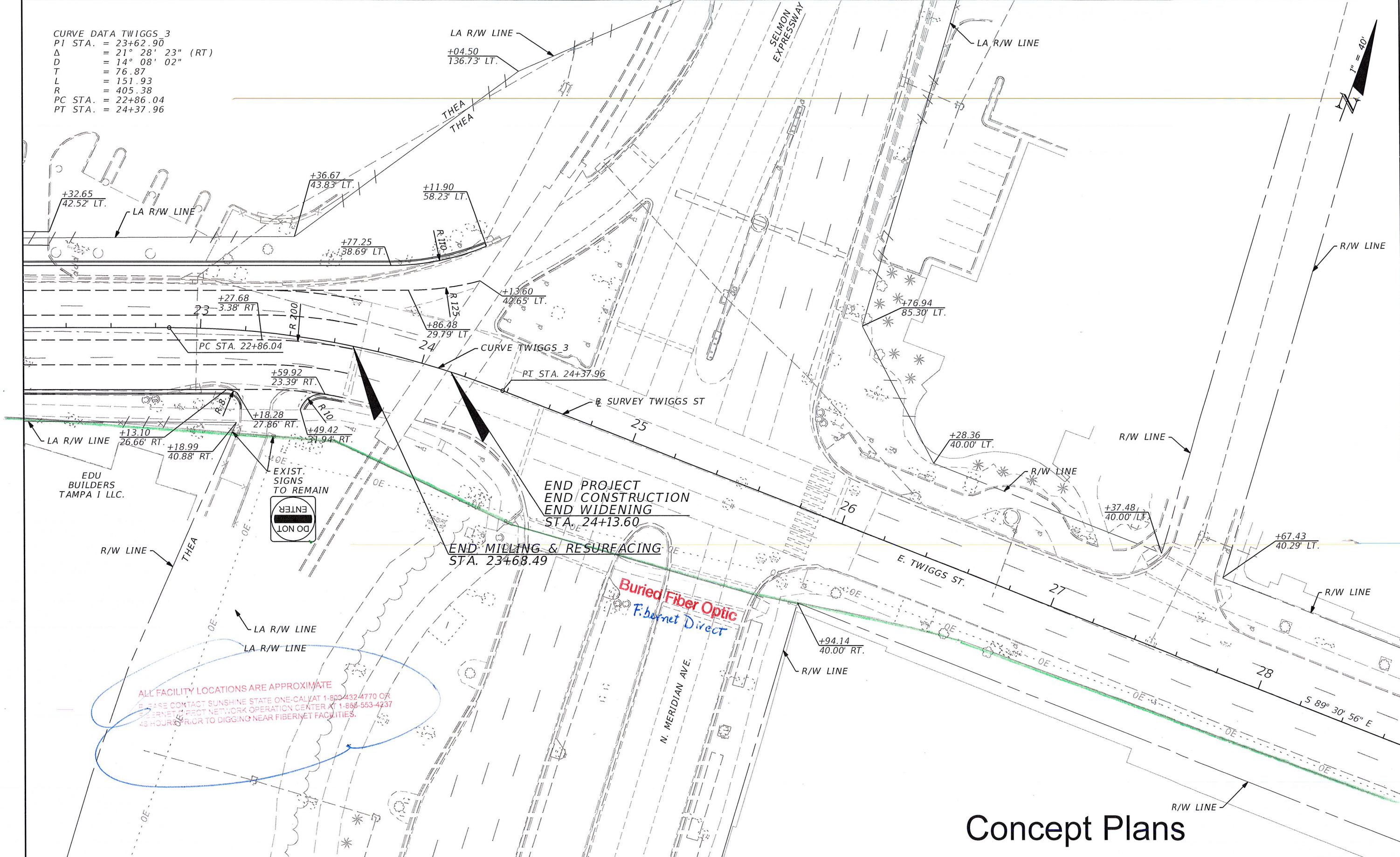
| REVISIONS | | | | TAMPA HILLSBOROUGH EXPRESSWAY AUTHORITY | | | ROADWAY PLAN (01) TWIGGS ST | SHEET NO. |
|-----------|-------------|------|-------------|---|--------------|----------------------|--------------------------------|-----------|
| DATE | DESCRIPTION | DATE | DESCRIPTION | ROAD NO. | COUNTY | FINANCIAL PROJECT ID | | |
| | | | | | HILLSBOROUGH | 0-00918 | | |

HNTB CORPORATION
 201 N. FRANKLIN STREET, SUITE 1200
 TAMPA, FL 33602
 PHONE: (813) 402-4150
 CERTIFICATE OF AUTHORIZATION NO. 6500
 DOUGLAS J. BURKHART, P.E. NO. 40900

CURVE DATA TWIGGS 3
 PI STA. = 23+62.90
 Δ = 21° 28' 23" (RT)
 D = 14° 08' 02"
 T = 76.87
 L = 151.93
 R = 405.38
 PC STA. = 22+86.04
 PT STA. = 24+37.96

LA R/W LINE
 +04.50
 136.73' LT.

LA R/W LINE



END PROJECT
 END CONSTRUCTION
 END WIDENING
 STA. 24+13.60

END MILLING & RESURFACING
 STA. 23+68.49

ALL FACILITY LOCATIONS ARE APPROXIMATE
 PLEASE CONTACT SUNSHINE STATE ONE-CALL AT 1-800-432-4770 OR
 FIBERNET PROJECT NETWORK OPERATION CENTER AT 1-866-553-4237
 48 HOURS PRIOR TO DIGGING NEAR FIBERNET FACILITIES.

Concept Plans

| REVISIONS | | REVISIONS | | HNTB CORPORATION 201 N. FRANKLIN STREET, SUITE 1200 TAMPA, FL 33602 PHONE: (813) 402-4150 CERTIFICATE OF AUTHORIZATION NO. 6500 DOUGLAS J. BURKHART, P.E. NO. 40900 | TAMPA HILLSBOROUGH EXPRESSWAY AUTHORITY | | | ROADWAY PLANS (02) TWIGGS ST | SHEET NO. |
|-----------|-------------|-----------|-------------|--|--|---------|----------------------|---------------------------------|--------------|
| DATE | DESCRIPTION | DATE | DESCRIPTION | | ROAD NO. | COUNTY | FINANCIAL PROJECT ID | | |
| | | | | | HILLSBOROUGH | O-00918 | | | |