

**CONTRACT PLANS COMPONENTS**

ROADWAY PLANS

**TAMPA HILLSBOROUGH  
EXPRESSWAY AUTHORITY**

**CONTRACT PLANS**

PROJECT ID: O-00419

HILLSBOROUGH COUNTY (10002)

E. TWIGGS STREET UTILITY ADJUSTMENTS

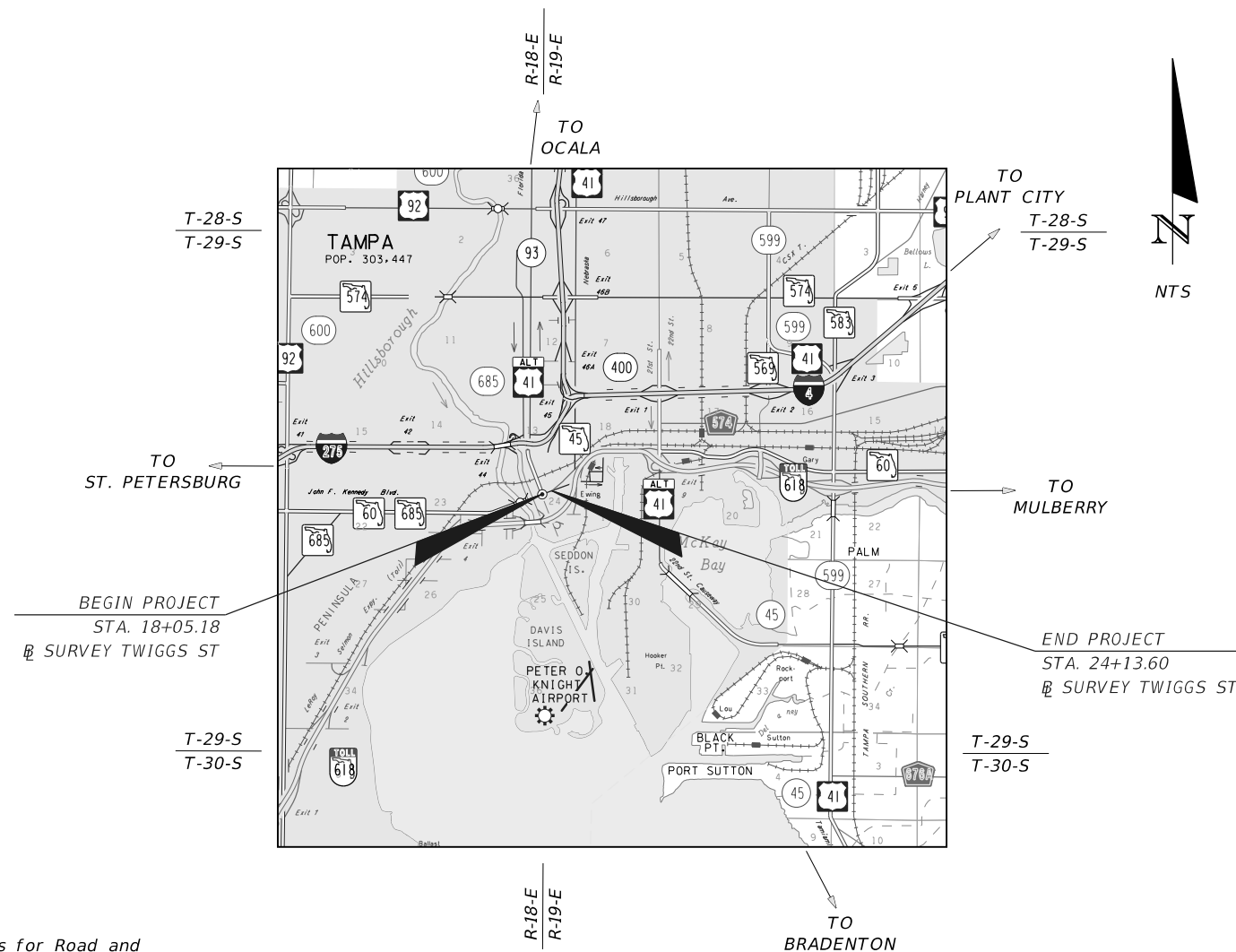
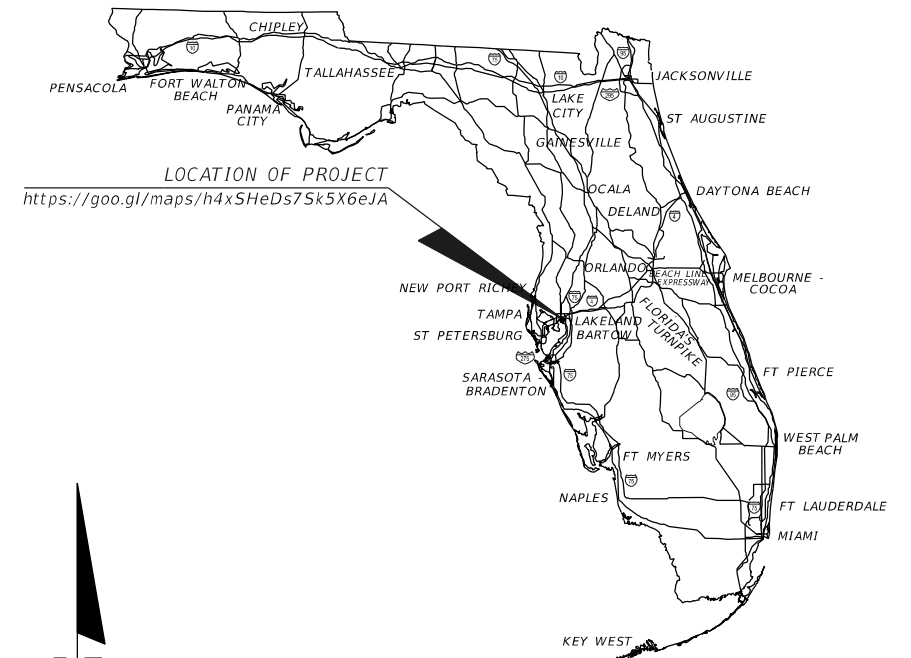
**INDEX OF ROADWAY PLANS**

SHEET NO.	SHEET DESCRIPTION
1	KEY SHEET
2	SIGNATURE SHEET
3	GENERAL NOTES
UTV-1	SUMMARY OF VERIFIED UTILITIES
4 - 5	UTILITY ADJUSTMENT TYPICAL SECTION* ROADWAY PLAN*

\* PLAN SHEETS PROVIDED FOR INFORMATION ONLY



Fiberlight Markups 11-14-19



**GOVERNING STANDARD PLANS:**

Florida Department of Transportation, FY2018/19 Standard Plans for Road and Bridge Construction and applicable Interim Revisions (IRs).

Standard Plans for Road Construction and associated IRs are available at the following website: <http://www.fdot.gov/design/standardplans>

**GOVERNING STANDARD SPECIFICATIONS:**

Florida Department of Transportation, July 2018 Standard Specifications for Road and Bridge Construction at the following website: <http://www.fdot.gov/programmanagement/Implemented/SpecBooks>

**ROADWAY PLANS  
ENGINEER OF RECORD:**

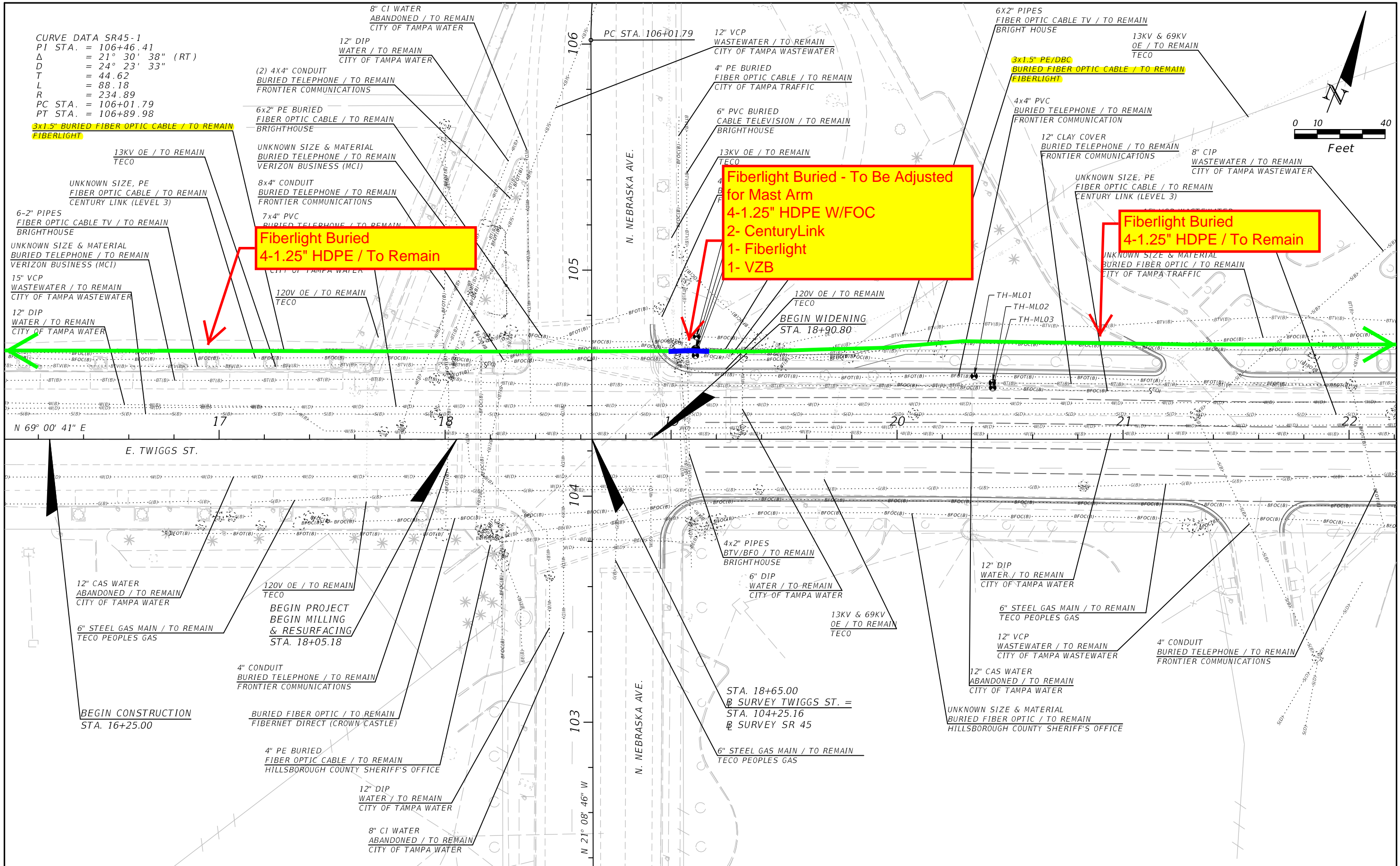
MEGAN M. TETRO, P.E. NO.: 76120  
WANTMAN GROUP, INC.  
3111 W. DR. MARTIN LUTHER KING JR. BLVD.,  
SUITE 375, TAMPA, FL 33607  
(813) 574-3190  
CERTIFICATE OF AUTHORIZATION NO.: 6091

**THEA PROJECT MANAGER:**

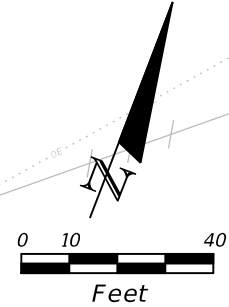
DAVID MAY, P.E.

CONSTRUCTION CONTRACT NO.	FISCAL YEAR	SHEET NO.
		1

THE OFFICIAL RECORD OF THIS SHEET IS THE ELECTRONIC FILE DIGITALLY SIGNED AND SEALED UNDER RULE 61G15-23.004, F.A.C.



CURVE DATA SR45-1  
 PI STA. = 106+46.41  
 Δ = 21° 30' 38" (RT)  
 D = 24° 23' 33"  
 T = 44.62  
 L = 88.18  
 R = 234.89  
 PC STA. = 106+01.79  
 PT STA. = 106+89.98



**Fiberlight Buried  
 4-1.25" HDPE / To Remain**

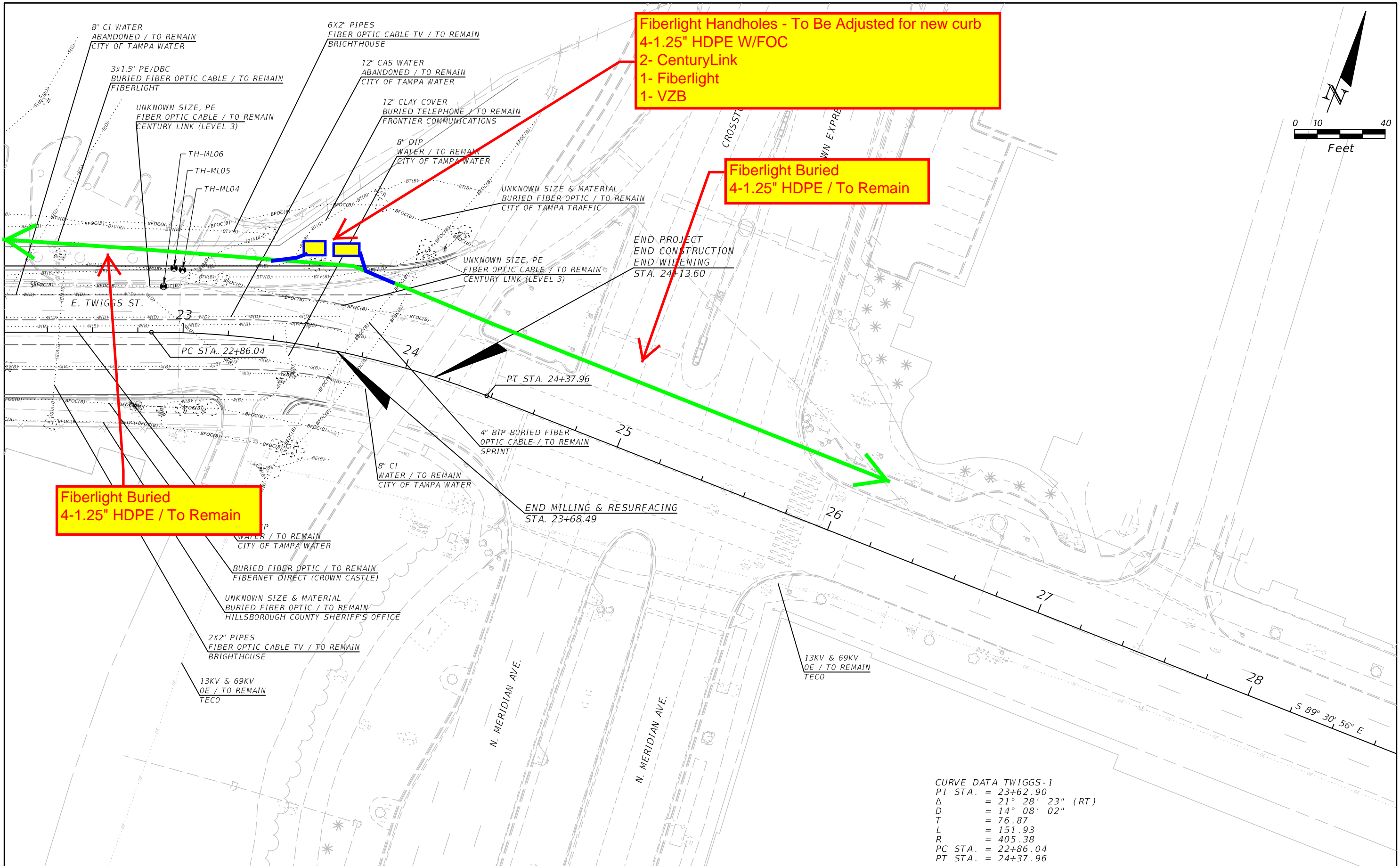
**Fiberlight Buried - To Be Adjusted  
 for Mast Arm  
 4-1.25" HDPE W/FOC  
 2- CenturyLink  
 1- Fiberlight  
 1- VZB**

**Fiberlight Buried  
 4-1.25" HDPE / To Remain**

REVISIONS				MEGAN M. TETRO, P.E. FLORIDA PE NO. 76120 WANTMAN GROUP, INC. 3111 W. MARTIN LUTHER KING JR. BLVD., SUITE 375, TAMPA, FL 33607 CERTIFICATE OF AUTHORIZATION NO. 6091	TAMPA HILLSBOROUGH EXPRESSWAY AUTHORITY			SHEET NO. 4
DATE	DESCRIPTION	DATE	DESCRIPTION		ROAD	COUNTY	CONTRACT NO.	
						TWIGGS	HILLSBOROUGH	

THE OFFICIAL RECORD OF THIS SHEET IS THE ELECTRONIC FILE DIGITALLY SIGNED AND SEALED UNDER RULE 61G15-23.004, F.A.C.

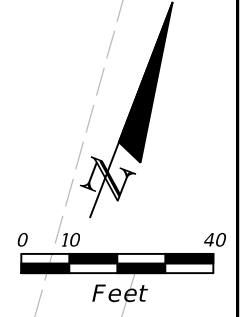
**UTILITY ADJUSTMENT (1)**



**Fiberlight Handholes - To Be Adjusted for new curb  
4-1.25\"/>**

**Fiberlight Buried  
4-1.25\"/>**

**Fiberlight Buried  
4-1.25\"/>**



**CURVE DATA TWIGGS-1**  
 PI STA. = 23+62.90  
 Δ = 21° 28' 23" (RT)  
 D = 14° 08' 02"  
 T = 76.87  
 L = 151.93  
 R = 405.38  
 PC STA. = 22+86.04  
 PT STA. = 24+37.96

REVISIONS				MEGAN M. TETRO, P.E. FLORIDA PE NO. 76120 WANTMAN GROUP, INC. 3111 W. MARTIN LUTHER KING JR. BLVD., SUITE 375, TAMPA, FL 33607 CERTIFICATE OF AUTHORIZATION NO. 6091	TAMPA HILLSBOROUGH EXPRESSWAY AUTHORITY			SHEET NO.  5
DATE	DESCRIPTION	DATE	DESCRIPTION		ROAD	COUNTY	CONTRACT NO.	
					TWIGGS	HILLSBOROUGH	000419	

THE OFFICIAL RECORD OF THIS SHEET IS THE ELECTRONIC FILE DIGITALLY SIGNED AND SEALED UNDER RULE 61G15-23.004, F.A.C.